

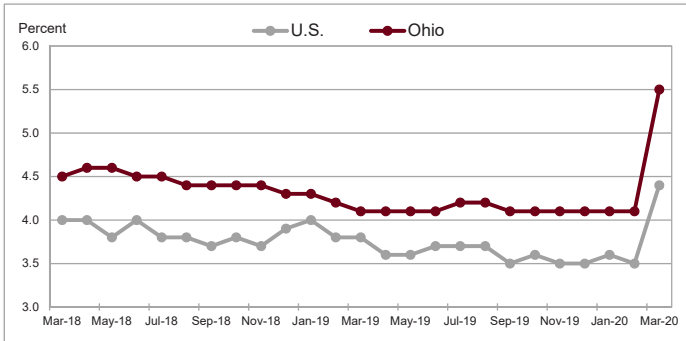
Employment Situation: Ohio and U.S. (Seasonally Adjusted)

Civilian Labor Force

Ohio's unemployment rate was 5.5% in March 2020, up from 4.1% in February. The number of unemployed in Ohio in March was 314,000, up 73,000 from 241,000 in February. The number of unemployed has increased by 75,000 in the past 12 months from 239,000. The March unemployment rate for Ohio increased from 4.1% in March 2019.

The U.S. unemployment rate for March was 4.4%, up from 3.5% in February, and up from 3.8% in March 2019.

Ohio and U.S. Unemployment Rates (Seasonally Adjusted)



Payroll Survey

Over-the-Month Change: Ohio's nonagricultural wage and salary employment decreased 39,700 over the month, from a revised 5,599,100 in February to 5,559,400 in March, according to the latest business establishment survey conducted by the U.S. Department of Labor (Bureau of Labor Statistics) in cooperation with ODJFS.

Employment in goods-producing industries, at 938,100, decreased 2,800 over the month with losses in construction (-1,500), manufacturing (-1,200), and mining and logging (-100).

The private service-providing sector, at 3,839,600, lost 36,300 jobs in leisure and hospitality (-27,000), trade, transportation, and utilities (-4,400), educational and health services (-2,200), other services (-1,600), financial activities (-500), professional and business services (-400), and information (-200).

Government employment, at 781,700, decreased 600 with losses in state (-500) and federal (-100) government. Local government did not change over the month.

Over-the-Year Change: From March 2019 to March 2020, nonagricultural wage and salary employment decreased 30,800. Employment in goods-producing industries decreased 2,700. Manufacturing lost 3,900 jobs as losses in durable

goods (-7,300) outpaced gains in nondurable goods (+3,400). Construction added 1,900 jobs while mining and logging lost 700 jobs.

Employment in the private service-providing sector decreased 21,500 as losses in leisure and hospitality (-19,500), financial activities (-2,700), professional and business services (-2,700), trade, transportation, and utilities (-2,100), other services (-1,700), and information (-300) outweighed gains in educational and health services (+7,500).

Government decreased 6,600 as losses in state (-5,700) and local (-1,500) government surpassed gains in federal government (+600).

Ohio Nonfarm Employment Over-the-Month Change (Seasonally Adjusted)



In This Issue

Employment Situation: Ohio and U.S.....	1
Ohio Civilian Labor Force and Nonagricultural Employment Estimates Seasonally Adjusted.....	2
Historical Labor Force Estimates Seasonally Adjusted.....	3
Historical Nonagricultural Employment Seasonally Adjusted.....	4
Ohio Nonagricultural Wage and Salary Employment Not Seasonally Adjusted.....	5
Historical Nonagricultural Employment Not Seasonally Adjusted.....	8
Map of Metropolitan Statistical Areas.....	9
Metropolitan Statistical Areas.....	10
Hours and Earnings of All Employees Not Seasonally Adjusted.....	46
Hours and Earnings of Production and Nonsupervisory Employees Not Seasonally Adjusted.....	47
Selected Unemployment Insurance Activities Not Seasonally Adjusted.....	48
Technical Notes.....	49
Types of Businesses by NAICS.....	51

Ohio Civilian Labor Force and Nonagricultural Wage and Salary Employment Estimates Seasonally Adjusted^a

	Employment (thousands)			Change (thousands)		Percent Change	
	Mar 2020	Feb 2020	Mar 2019	From Last Month	From Last Year	From Last Month	From Last Year
Civilian Labor Force^b							
Total	5,732.2	5,829.1	5,791.2	-96.9	-59.0	-1.7	-1.0
Employment	5,418.4	5,588.3	5,552.7	-169.9	-134.3	-3.0	-2.4
Unemployment	313.8	240.8	238.5	73.0	75.3	30.3	31.6
Unemployment Rate (%)	5.5	4.1	4.1	1.4	1.4
Payroll Survey^c							
Total Nonagricultural	5,559.4	5,599.1	5,590.2	-39.7	-30.8	-0.7	-0.6
Total Private	4,777.7	4,816.8	4,801.9	-39.1	-24.2	-0.8	-0.5
Goods-Producing (Private)	938.1	940.9	940.8	-2.8	-2.7	-0.3	-0.3
Mining and Logging	11.5	11.6	12.2	-0.1	-0.7	-0.9	-5.7
Construction	227.6	229.1	225.7	-1.5	1.9	-0.7	0.8
Manufacturing	699.0	700.2	702.9	-1.2	-3.9	-0.2	-0.6
Durable Goods	467.0	469.7	474.3	-2.7	-7.3	-0.6	-1.5
Nondurable Goods	232.0	230.5	228.6	1.5	3.4	0.7	1.5
Service-Providing (Private)	3,839.6	3,875.9	3,861.1	-36.3	-21.5	-0.9	-0.6
Trade, Transportation, and Utilities	1,022.4	1,026.8	1,024.5	-4.4	-2.1	-0.4	-0.2
Wholesale Trade	231.3	233.7	237.3	-2.4	-6.0	-1.0	-2.5
Retail Trade	550.0	549.9	556.0	0.1	-6.0	0.0	-1.1
Transportation, Warehousing, and Utilities	241.1	243.2	231.2	-2.1	9.9	-0.9	4.3
Information	69.8	70.0	70.1	-0.2	-0.3	-0.3	-0.4
Financial Activities	306.8	307.3	309.5	-0.5	-2.7	-0.2	-0.9
Finance and Insurance	241.1	241.1	243.9	0.0	-2.8	0.0	-1.1
Real Estate and Rental and Leasing	65.7	66.2	65.6	-0.5	0.1	-0.8	0.2
Professional and Business Services	732.2	732.6	734.9	-0.4	-2.7	-0.1	-0.4
Professional and Technical Services	275.0	273.2	267.2	1.8	7.8	0.7	2.9
Management of Companies and Enterprises	139.9	140.1	142.2	-0.2	-2.3	-0.1	-1.6
Administrative, Support, and Waste Services	317.3	319.3	325.5	-2.0	-8.2	-0.6	-2.5
Educational and Health Services	946.2	948.4	938.7	-2.2	7.5	-0.2	0.8
Educational Services	114.6	117.0	117.4	-2.4	-2.8	-2.1	-2.4
Health Care and Social Assistance	831.6	831.4	821.3	0.2	10.3	0.0	1.3
Leisure and Hospitality	550.9	577.9	570.4	-27.0	-19.5	-4.7	-3.4
Arts, Entertainment, and Recreation	82.6	83.2	83.3	-0.6	-0.7	-0.7	-0.8
Accommodation and Food Services	468.3	494.7	487.1	-26.4	-18.8	-5.3	-3.9
Other Services	211.3	212.9	213.0	-1.6	-1.7	-0.8	-0.8
Government	781.7	782.3	788.3	-0.6	-6.6	-0.1	-0.8
Federal Government	79.7	79.8	79.1	-0.1	0.6	-0.1	0.8
State Government	171.7	172.2	177.4	-0.5	-5.7	-0.3	-3.2
Local Government	530.3	530.3	531.8	0.0	-1.5	0.0	-0.3

^aData for latest month are preliminary, although other months are subject to revision. Subtotals may not add to totals due to rounding. Unemployment rates are computed from unrounded figures. All data exclude military personnel. ^bData are Local Area Unemployment Statistics estimates based on place of residence.

^cFrom the Current Employment Statistics Survey, a monthly survey of approximately 27,900 employers conducted by the U.S. Bureau of Labor Statistics. Estimates represent nonagricultural wage and salary jobs by place of work.

Seasonally adjusted nonfarm employment data for the Ohio Metropolitan Statistical Areas may be accessed at the Bureau of Labor Statistics website at <http://www.bls.gov/sae/>.

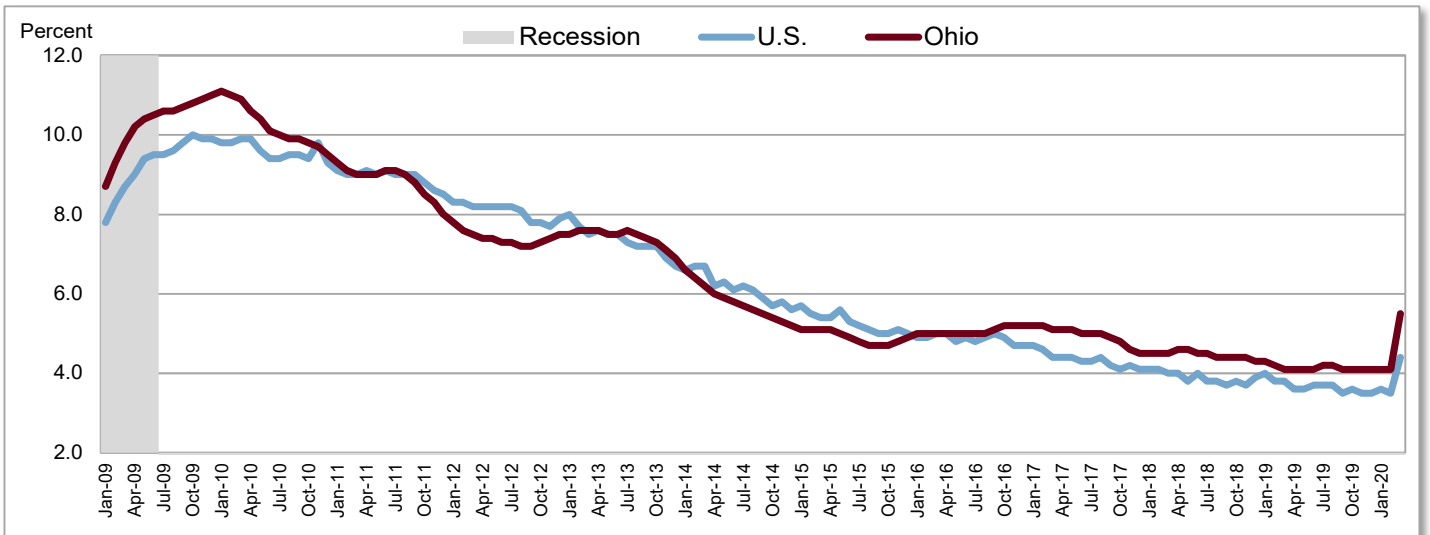
Ohio

Historical Civilian Labor Force Estimates

Seasonally Adjusted

	Civilian Labor Force (thousands)			Unemployment Rates	
	Total	Employed	Unemployed	Ohio	U.S.
2010	5,846.9	5,247.1	599.8	10.3%	9.6%
2011	5,771.5	5,261.2	510.2	8.8%	8.9%
2012	5,705.6	5,284.0	421.6	7.4%	8.1%
2013	5,716.7	5,290.6	426.1	7.5%	7.4%
2014	5,704.4	5,373.1	331.3	5.8%	6.2%
2015	5,699.2	5,419.4	279.8	4.9%	5.3%
2016	5,743.2	5,454.6	288.6	5.0%	4.9%
2017	5,778.7	5,491.5	287.2	5.0%	4.4%
2018	5,780.7	5,521.7	259.1	4.5%	3.9%
2019	5,802.3	5,563.6	238.7	4.1%	3.7%
2019					
February	5,798.1	5,555.2	243.0	4.2%	3.8%
March	5,791.2	5,552.7	238.5	4.1%	3.8%
April	5,787.8	5,551.4	236.4	4.1%	3.6%
May	5,789.5	5,552.7	236.8	4.1%	3.6%
June	5,795.6	5,556.7	238.9	4.1%	3.7%
July	5,804.1	5,563.1	241.0	4.2%	3.7%
August	5,810.6	5,569.2	241.4	4.2%	3.7%
September	5,814.1	5,574.0	240.1	4.1%	3.5%
October	5,814.5	5,576.3	238.1	4.1%	3.6%
November	5,812.6	5,575.6	237.0	4.1%	3.5%
December	5,811.8	5,574.9	236.9	4.1%	3.5%
2020					
January	5,818.8	5,580.4	238.4	4.1%	3.6%
February	5,829.1	5,588.3	240.8	4.1%	3.5%
March	5,732.2	5,418.4	313.8	5.5%	4.4%

Ohio and U.S. Unemployment Rates
(Seasonally Adjusted)

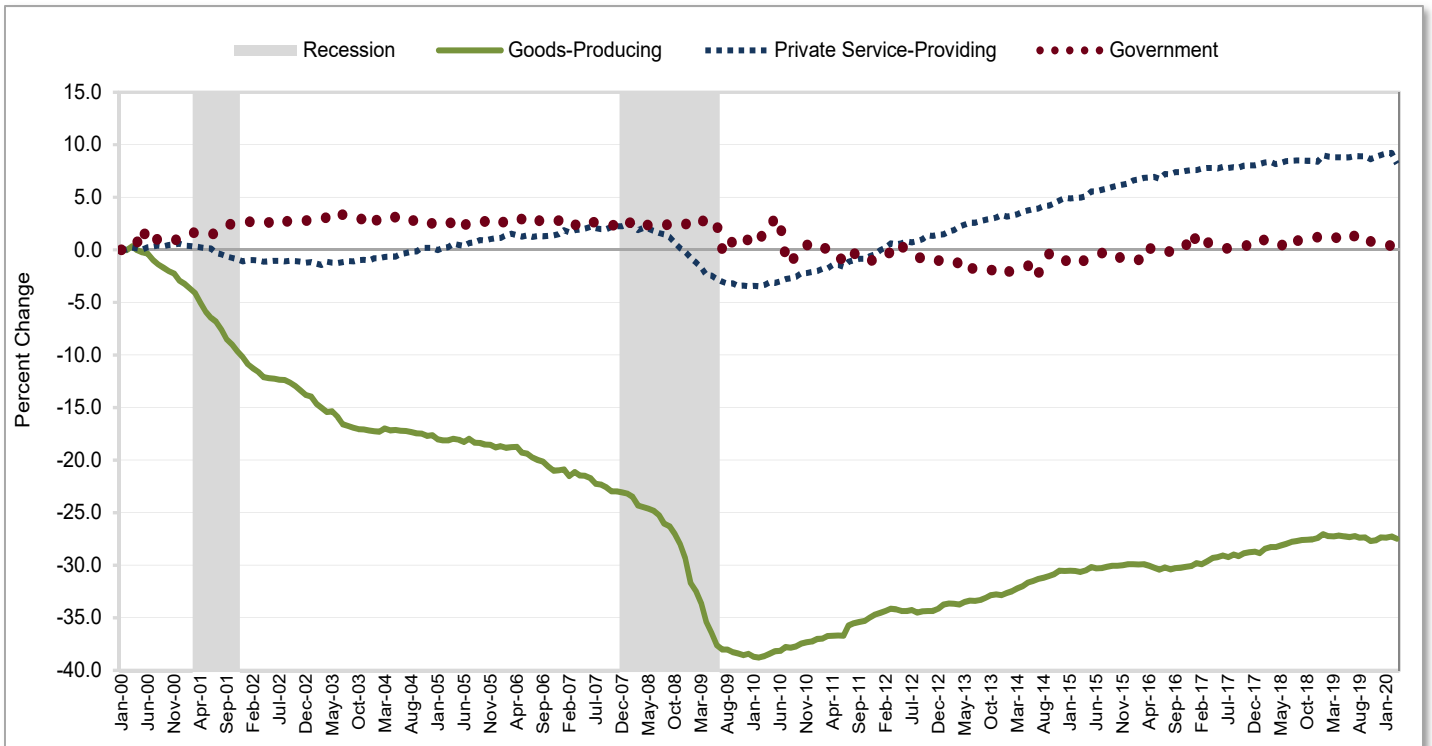


Recessionary periods as defined by the National Bureau of Economic Research (NBER).

Ohio Historical Nonagricultural Wage and Salary Employment Seasonally Adjusted

	Grand Total	Private Goods-Producing Employment (thousands)				Private Service-Providing Employment (thousands)								Government Employment (thousands)			
		Total	Mining and Logging	Const.	Mfg.	Total	Trade, Transport., and Utilities	Info.	Financial Activities	Prof. and Business Services	Educational and Health Services	Leisure and Hospitality	Other Services	Total	Federal	State	Local
2019																	
February	5,591.5	941.1	12.2	225.1	703.8	3,863.7	1,025.8	70.1	309.7	735.6	938.7	570.8	213.0	786.7	79.1	177.0	530.6
March	5,590.2	940.8	12.2	225.7	702.9	3,861.1	1,024.5	70.1	309.5	734.9	938.7	570.4	213.0	788.3	79.1	177.4	531.8
April	5,592.1	942.2	12.2	227.2	702.8	3,861.8	1,022.7	69.4	309.4	737.8	939.6	569.8	213.1	788.1	79.2	177.6	531.3
May	5,588.7	940.8	12.2	225.8	702.8	3,860.5	1,023.0	69.6	309.5	737.0	940.0	568.5	212.9	787.4	79.4	177.2	530.8
June	5,587.8	939.9	12.0	225.7	702.2	3,861.8	1,023.9	69.5	309.6	736.9	940.2	568.5	213.2	786.1	79.5	178.0	528.6
July	5,596.2	941.1	12.0	225.5	703.6	3,865.5	1,028.0	69.3	310.1	737.6	939.2	568.0	213.3	789.6	79.5	177.8	532.3
August	5,595.9	939.4	11.7	226.0	701.7	3,865.0	1,028.3	68.8	309.6	736.6	940.0	568.2	213.5	791.5	80.5	178.1	532.9
September	5,591.9	939.7	11.6	227.1	701.0	3,864.7	1,028.7	68.9	310.0	735.9	939.6	568.0	213.6	787.5	80.2	177.3	530.0
October	5,575.9	935.5	11.6	226.3	697.6	3,855.0	1,025.7	69.6	309.2	731.5	941.1	566.6	211.3	785.4	80.2	178.2	527.0
November	5,583.4	936.1	11.5	226.1	698.5	3,862.3	1,025.0	69.6	309.5	735.0	940.3	568.4	214.5	785.0	80.2	177.1	527.7
December	5,591.9	939.5	11.5	228.5	699.5	3,869.5	1,026.0	69.5	311.4	735.1	944.4	569.4	213.7	782.9	79.4	175.9	527.6
2020																	
January	5,596.8	939.4	11.5	229.6	698.3	3,874.9	1,028.9	69.7	308.4	729.2	950.1	575.5	213.1	782.5	79.9	173.4	529.2
February	5,599.1	940.9	11.6	229.1	700.2	3,875.9	1,026.8	70.0	307.3	732.6	948.4	577.9	212.9	782.3	79.8	172.2	530.3
March	5,559.4	938.1	11.5	227.6	699.0	3,839.6	1,022.4	69.8	306.8	732.2	946.2	550.9	211.3	781.7	79.7	171.7	530.3

**Percent Change in Ohio Nonfarm Employment by Month
January 2000 - March 2020
(Seasonally Adjusted)**



Recessionary periods as defined by the National Bureau of Economic Research (NBER).

Note: In June 2015 the seasonal model for state government employment was updated to account for improved data collection. To preserve the continuity of the time series, the updated seasonal factors were applied back to October 2014. The series affected are state government, total government, and total nonfarm employment. If you have any questions about the updates, please email ContactLMI@jfs.ohio.gov.

Ohio

Nonagricultural

Wage and Salary Employment^a

Not Seasonally Adjusted

	Employment (thousands)			Change (thousands)		Percent Change	
	Mar 2020 ^b	Feb 2020 ^c	Mar 2019 ^c	From Last Month	From Last Year	From Last Month	From Last Year
Total Nonagricultural	5,497.7	5,518.7	5,527.8	-21.0	-30.1	-0.4	-0.5
Total Private	4,703.8	4,726.0	4,726.7	-22.2	-22.9	-0.5	-0.5
Goods-Producing (Private)	920.5	919.4	923.1	1.1	-2.6	0.1	-0.3
Mining, Logging, and Construction	222.2	218.5	221.9	3.7	0.3	1.7	0.1
Mining and Logging	11.3	11.0	12.1	0.3	-0.8	2.7	-6.6
Construction	210.9	207.5	209.8	3.4	1.1	1.6	0.5
Construction of Buildings	48.2	48.8	48.1	-0.6	0.1	-1.2	0.2
Nonresidential Building Construction	27.6	27.3	28.1	0.3	-0.5	1.1	-1.8
Heavy and Civil Engineering Construction	23.8	22.6	26.9	1.2	-3.1	5.3	-11.5
Specialty Trade Contractors	138.9	136.1	134.8	2.8	4.1	2.1	3.0
Manufacturing	698.3	700.9	701.2	-2.6	-2.9	-0.4	-0.4
Durable Goods ^d	466.5	470.4	473.7	-3.9	-7.2	-0.8	-1.5
Nonmetallic Mineral Product Manufacturing	26.6	26.5	27.0	0.1	-0.4	0.4	-1.5
Primary Metal Manufacturing	35.5	35.7	36.1	-0.2	-0.6	-0.6	-1.7
Fabricated Metal Product Manufacturing	99.7	99.4	103.4	0.3	-3.7	0.3	-3.6
Machine Shops and Threaded Products	24.9	24.9	26.1	0.0	-1.2	0.0	-4.6
Machinery Manufacturing	79.1	79.8	80.4	-0.7	-1.3	-0.9	-1.6
Metalworking Machinery Manufacturing	21.9	22.0	22.7	-0.1	-0.8	-0.5	-3.5
Computer and Electronic Product Manufacturing	21.6	21.6	21.3	0.0	0.3	0.0	1.4
Electrical Equipment, Appliance, and Component Mfg.	25.8	25.9	26.8	-0.1	-1.0	-0.4	-3.7
Household Appliance Manufacturing	9.6	9.6	10.1	0.0	-0.5	0.0	-5.0
Transportation Equipment Manufacturing	127.6	129.3	128.3	-1.7	-0.7	-1.3	-0.5
Motor Vehicle Manufacturing	21.8	22.1	21.5	-0.3	0.3	-1.4	1.4
Motor Vehicle Parts Manufacturing	74.7	75.8	75.7	-1.1	-1.0	-1.5	-1.3
Aerospace Product and Parts Manufacturing	19.9	20.0	19.7	-0.1	0.2	-0.5	1.0
Furniture and Related Product Manufacturing	15.3	15.3	15.6	0.0	-0.3	0.0	-1.9
Nondurable Goods ^e	231.8	230.5	227.5	1.3	4.3	0.6	1.9
Food Manufacturing	59.0	59.1	59.6	-0.1	-0.6	-0.2	-1.0
Printing and Related Support Activities	20.3	20.3	21.2	0.0	-0.9	0.0	-4.2
Chemical Manufacturing	46.0	46.0	46.0	0.0	0.0	0.0	0.0
Plastics and Rubber Products Manufacturing	58.3	58.4	58.5	-0.1	-0.2	-0.2	-0.3
Plastics Product Manufacturing	44.7	44.7	44.4	0.0	0.3	0.0	0.7
Rubber Product Manufacturing	13.6	13.7	14.1	-0.1	-0.5	-0.7	-3.5
Service-Providing (Private)	3,783.3	3,806.6	3,803.6	-23.3	-20.3	-0.6	-0.5
Trade, Transportation, and Utilities	1,007.0	1,012.4	1,008.4	-5.4	-1.4	-0.5	-0.1
Wholesale Trade	229.7	233.6	236.1	-3.9	-6.4	-1.7	-2.7
Merchant Wholesalers, Durable Goods	136.8	139.5	140.8	-2.7	-4.0	-1.9	-2.8
Professional and Commercial Equipment	28.9	29.3	29.2	-0.4	-0.3	-1.4	-1.0
Machinery, Equipment, and Supplies	35.4	36.0	35.4	-0.6	0.0	-1.7	0.0
Merchant Wholesalers, Nondurable Goods	75.4	75.3	77.1	0.1	-1.7	0.1	-2.2

- continued on next page -

Ohio

Nonagricultural

Wage and Salary Employment^a

Not Seasonally Adjusted

- continued -

	Employment (thousands)			Change (thousands)		Percent Change	
	Mar 2020 ^b	Feb 2020 ^c	Mar 2019 ^c	From Last Month	From Last Year	From Last Month	From Last Year
Retail Trade	540.8	537.8	545.8	3.0	-5.0	0.6	-0.9
Motor Vehicle and Parts Dealers	80.6	79.9	78.8	0.7	1.8	0.9	2.3
Automobile Dealers	50.8	50.3	49.8	0.5	1.0	1.0	2.0
Furniture and Home Furnishings Stores	13.1	13.1	13.5	0.0	-0.4	0.0	-3.0
Building Material and Garden Supply Stores	52.0	48.8	51.4	3.2	0.6	6.6	1.2
Building Material and Supplies Dealers	45.1	43.5	45.0	1.6	0.1	3.7	0.2
Food and Beverage Stores	98.0	96.0	100.8	2.0	-2.8	2.1	-2.8
Grocery Stores	89.2	87.5	90.4	1.7	-1.2	1.9	-1.3
Health and Personal Care Stores	34.7	34.6	35.3	0.1	-0.6	0.3	-1.7
Gasoline Stations	35.7	36.4	35.9	-0.7	-0.2	-1.9	-0.6
Clothing and Clothing Accessories Stores	33.2	33.6	35.8	-0.4	-2.6	-1.2	-7.3
General Merchandise Stores	102.0	102.2	106.2	-0.2	-4.2	-0.2	-4.0
Miscellaneous Store Retailers	29.5	29.6	29.0	-0.1	0.5	-0.3	1.7
Transportation, Warehousing, and Utilities	236.5	241.0	226.5	-4.5	10.0	-1.9	4.4
Utilities	18.6	18.4	19.0	0.2	-0.4	1.1	-2.1
Transportation and Warehousing	217.9	222.6	207.5	-4.7	10.4	-2.1	5.0
Air Transportation	10.3	10.3	9.9	0.0	0.4	0.0	4.0
Truck Transportation	69.9	70.7	70.7	-0.8	-0.8	-1.1	-1.1
Information	69.3	69.4	69.6	-0.1	-0.3	-0.1	-0.4
Publishing Industries, Except Internet	19.7	19.8	20.5	-0.1	-0.8	-0.5	-3.9
Telecommunications	22.0	22.1	22.9	-0.1	-0.9	-0.5	-3.9
Financial Activities	304.1	304.4	307.2	-0.3	-3.1	-0.1	-1.0
Finance and Insurance	240.8	240.9	243.3	-0.1	-2.5	0.0	-1.0
Credit Intermediation and Related Activities	96.5	97.1	97.3	-0.6	-0.8	-0.6	-0.8
Depository Credit Intermediation	62.8	62.9	61.9	-0.1	0.9	-0.2	1.5
Insurance Carriers and Related Activities	124.0	123.5	126.4	0.5	-2.4	0.4	-1.9
Insurance Carriers	80.6	80.7	80.6	-0.1	0.0	-0.1	0.0
Real Estate and Rental and Leasing	63.3	63.5	63.9	-0.2	-0.6	-0.3	-0.9
Professional and Business Services	716.3	714.5	719.0	1.8	-2.7	0.3	-0.4
Professional, Scientific, and Technical Services	277.1	275.5	268.2	1.6	8.9	0.6	3.3
Legal Services	31.7	31.7	31.3	0.0	0.4	0.0	1.3
Accounting and Bookkeeping Services	34.0	33.5	34.2	0.5	-0.2	1.5	-0.6
Architectural and Engineering Services	43.2	43.3	42.2	-0.1	1.0	-0.2	2.4
Computer Systems Design and Related Services	66.1	65.2	63.6	0.9	2.5	1.4	3.9
Management and Technical Consulting Services	35.1	35.0	35.1	0.1	0.0	0.3	0.0
Advertising and Related Services	12.6	12.6	12.8	0.0	-0.2	0.0	-1.6
Management of Companies and Enterprises	138.9	139.2	141.1	-0.3	-2.2	-0.2	-1.6
Administrative, Support, and Waste Services	300.3	299.8	309.7	0.5	-9.4	0.2	-3.0
Administrative and Support Services	282.0	281.8	292.1	0.2	-10.1	0.1	-3.5
Employment Services	124.8	125.7	129.5	-0.9	-4.7	-0.7	-3.6
Business Support Services	34.9	35.5	33.5	-0.6	1.4	-1.7	4.2
Services to Buildings and Dwellings	64.9	62.6	64.9	2.3	0.0	3.7	0.0

- continued on next page -

Ohio

Nonagricultural

Wage and Salary Employment^a

Not Seasonally Adjusted

- continued -

	Employment (thousands)			Change (thousands)		Percent Change	
	Mar 2020 ^b	Feb 2020 ^c	Mar 2019 ^c	From Last Month	From Last Year	From Last Month	From Last Year
Educational and Health Services	951.4	953.0	939.3	-1.6	12.1	-0.2	1.3
Educational Services	122.4	124.9	120.5	-2.5	1.9	-2.0	1.6
Colleges, Universities, and Professional Schools	65.1	66.3	64.5	-1.2	0.6	-1.8	0.9
Health Care and Social Assistance	829.0	828.1	818.8	0.9	10.2	0.1	1.2
Hospitals	258.6	257.5	255.6	1.1	3.0	0.4	1.2
Nursing and Residential Care Facilities	167.0	167.1	167.4	-0.1	-0.4	-0.1	-0.2
Social Assistance	122.4	123.0	122.2	-0.6	0.2	-0.5	0.2
Leisure and Hospitality	525.1	542.3	548.6	-17.2	-23.5	-3.2	-4.3
Arts, Entertainment, and Recreation	68.0	65.8	70.3	2.2	-2.3	3.3	-3.3
Amusement, Gambling, and Recreation Industries	44.4	42.9	49.5	1.5	-5.1	3.5	-10.3
Accommodation and Food Services	457.1	476.5	478.3	-19.4	-21.2	-4.1	-4.4
Accommodation	35.5	35.4	36.6	0.1	-1.1	0.3	-3.0
Food Services and Drinking Places	421.6	441.1	441.7	-19.5	-20.1	-4.4	-4.6
Other Services	210.1	210.6	211.5	-0.5	-1.4	-0.2	-0.7
Repair and Maintenance	49.0	49.5	48.9	-0.5	0.1	-1.0	0.2
Personal and Laundry Services	53.3	54.5	55.8	-1.2	-2.5	-2.2	-4.5
Membership Associations and Organizations	107.8	106.6	106.8	1.2	1.0	1.1	0.9
Government	793.9	792.7	801.1	1.2	-7.2	0.2	-0.9
Federal Government	79.2	79.4	78.9	-0.2	0.3	-0.3	0.4
U.S. Postal Service	22.5	22.6	23.2	-0.1	-0.7	-0.4	-3.0
State Government	180.0	179.4	187.9	0.6	-7.9	0.3	-4.2
State Government Educational ^f Services	104.5	103.9	112.6	0.6	-8.1	0.6	-7.2
State Government, Excluding Education	75.5	75.5	75.3	0.0	0.2	0.0	0.3
State Government Hospitals	18.5	18.5	19.7	0.0	-1.2	0.0	-6.1
Local Government	534.7	533.9	534.3	0.8	0.4	0.1	0.1
Local Government Educational Services	298.8	298.5	299.4	0.3	-0.6	0.1	-0.2
Local Government, Excluding Education	235.9	235.4	234.9	0.5	1.0	0.2	0.4
Local Government Hospitals	11.7	11.7	11.8	0.0	-0.1	0.0	-0.8

^aSee Technical Notes for concepts. ^bPreliminary. ^cRevised. ^dIncludes wood products; miscellaneous manufacturing. ^eIncludes textile mills; textile products mills; apparel manufacturing; leather and allied products; petroleum and coal products. ^fIncludes state universities, state schools for the deaf and blind, and the state library. Excludes the agricultural extension service and agricultural research centers.

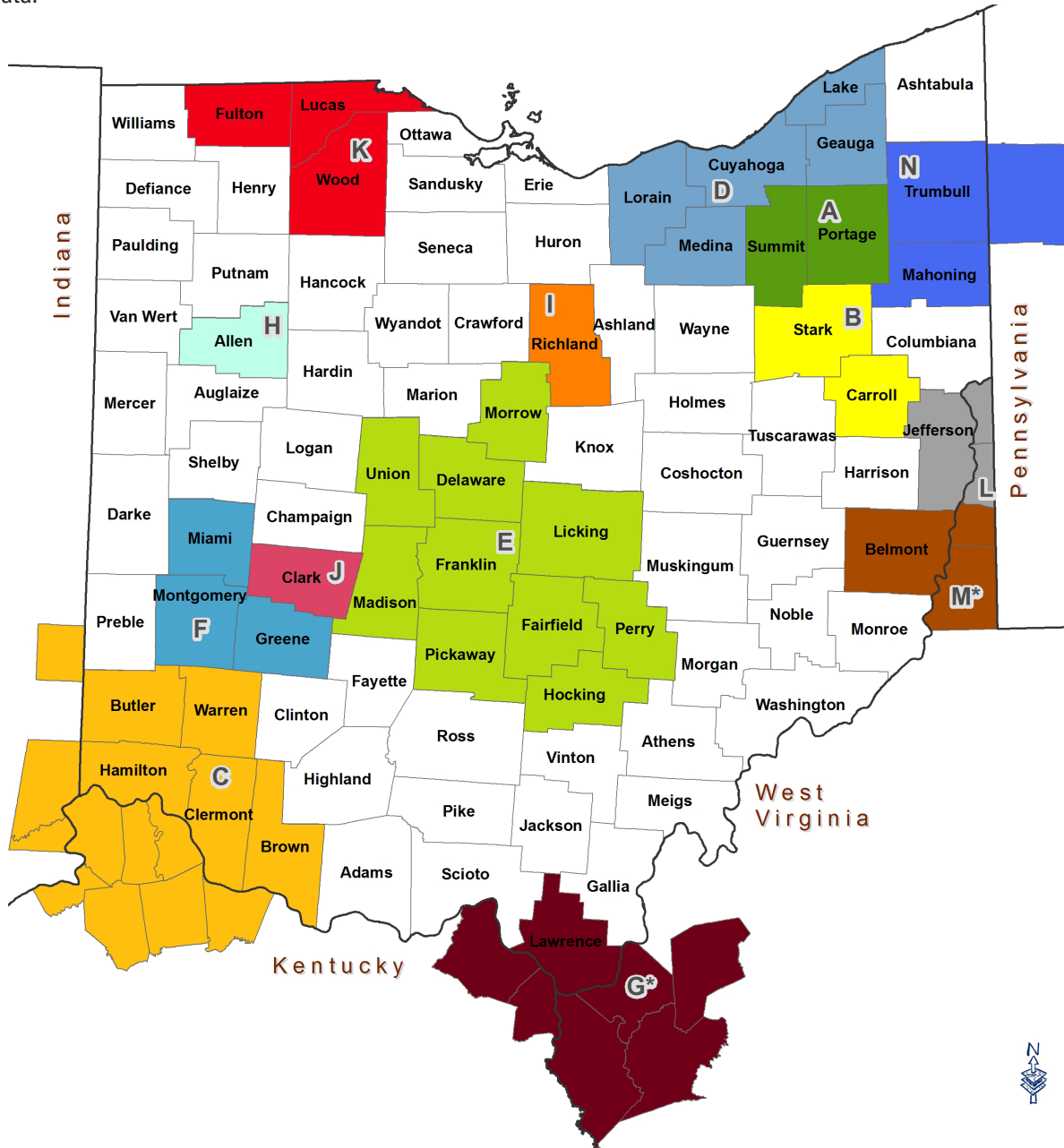
Ohio

Historical Nonagricultural Wage and Salary Employment Not Seasonally Adjusted

	Grand Total	Private Goods-Producing Employment (thousands)				Private Service-Providing Employment (thousands)								Government Employment (thousands)			
		Total	Mining and Logging	Const.	Mfg.	Total	Trade, Transport., and Utilities	Info.	Financial Activities	Prof. and Business Services	Educational and Health Services	Leisure and Hospitality	Other Services	Total	Federal	State	Local
2010	5,035.9	801.5	11.3	168.8	621.4	3,448.3	945.0	77.7	276.8	628.9	838.6	475.3	206.1	786.1	84.6	167.1	534.4
2011	5,107.9	826.9	11.3	176.1	639.4	3,504.9	954.9	76.2	278.0	655.3	849.7	483.5	207.4	776.1	80.3	169.2	526.6
2012	5,201.6	849.6	11.4	181.1	657.1	3,577.4	969.7	75.1	280.0	677.4	862.4	500.7	211.9	774.7	78.2	173.5	522.9
2013	5,266.8	862.3	12.5	186.0	663.7	3,637.0	978.8	75.3	284.4	693.2	875.6	517.9	211.8	767.5	76.5	172.3	518.7
2014	5,344.0	886.4	14.9	195.7	675.8	3,689.2	992.2	72.6	288.2	713.3	886.3	526.7	209.9	768.4	75.8	175.4	517.2
2015	5,423.6	902.3	14.1	200.5	687.7	3,748.2	1,009.0	71.8	293.5	720.3	901.3	539.6	212.6	773.2	76.4	178.1	518.7
2016	5,481.0	903.5	11.3	206.1	686.1	3,800.0	1,017.8	72.2	300.7	727.6	915.5	552.1	214.1	777.6	77.5	179.7	520.4
2017	5,525.8	915.6	11.4	217.1	687.1	3,827.1	1,021.5	71.9	306.1	726.8	925.1	560.7	215.0	783.0	78.3	179.9	524.8
2018	5,563.2	931.8	12.2	220.8	698.9	3,845.6	1,024.2	70.9	308.7	730.9	930.6	566.8	213.5	785.8	78.6	178.8	528.4
2019	5,586.8	939.3	11.9	226.0	701.4	3,861.5	1,025.4	69.5	309.5	735.1	940.3	568.6	213.1	786.1	79.6	176.8	529.7
2018																	
January	5,434.3	894.5	11.5	193.1	689.9	3,763.5	1,016.4	71.1	305.7	711.7	921.7	526.7	210.2	776.3	78.3	177.7	520.3
February	5,469.4	901.8	11.8	195.1	694.9	3,771.5	1,007.0	71.4	306.7	715.1	929.7	530.8	210.8	796.1	78.0	188.9	529.2
March	5,494.6	909.6	12.2	202.6	694.8	3,787.9	1,008.4	70.8	305.8	717.6	929.7	543.6	212.0	797.1	78.0	189.5	529.6
April	5,542.4	920.5	12.0	213.5	695.0	3,823.5	1,012.1	71.0	306.8	726.4	933.1	560.7	213.4	798.4	78.1	187.7	532.6
May	5,593.0	935.4	12.2	226.3	696.9	3,865.2	1,022.5	71.3	308.9	729.4	933.1	585.1	214.9	792.4	78.1	173.6	540.7
June	5,603.4	949.5	12.5	233.8	703.2	3,887.6	1,024.4	71.9	311.2	736.3	925.2	601.2	217.4	766.3	78.7	159.6	528.0
July	5,578.6	949.6	12.5	236.1	701.0	3,884.1	1,024.6	71.0	312.4	738.2	922.4	599.1	216.4	744.9	78.6	158.3	508.0
August	5,591.2	951.1	12.7	236.3	702.1	3,887.9	1,023.9	70.9	311.6	740.4	927.4	598.5	215.2	752.2	78.7	160.9	512.6
September	5,584.7	944.9	12.5	233.7	698.7	3,852.4	1,017.0	70.0	308.3	734.1	932.0	578.5	212.5	787.4	78.8	184.5	524.1
October	5,622.1	945.4	12.2	232.9	700.3	3,869.6	1,027.2	70.4	309.3	741.0	938.2	569.8	213.7	807.1	78.8	188.0	540.3
November	5,633.6	942.3	12.1	227.1	703.1	3,881.3	1,051.3	70.6	309.0	744.9	939.0	554.2	212.3	810.0	79.6	189.3	541.1
December	5,611.5	937.1	11.9	218.6	706.6	3,872.6	1,056.0	70.4	308.7	736.2	935.5	553.2	212.6	801.8	79.9	187.2	534.7
2019																	
January	5,488.3	918.3	11.7	204.9	701.7	3,793.5	1,022.7	69.6	307.4	717.6	932.2	534.2	209.8	776.5	78.4	172.8	525.3
February	5,504.9	917.6	11.7	202.8	703.1	3,791.2	1,008.3	69.9	307.7	718.6	938.7	537.7	210.3	796.1	78.9	184.9	532.3
March	5,527.8	923.1	12.1	209.8	701.2	3,803.6	1,008.4	69.6	307.2	719.0	939.3	548.6	211.5	801.1	78.9	187.9	534.3
April	5,584.8	935.2	12.2	222.4	700.6	3,846.9	1,011.1	69.2	308.1	735.8	943.2	566.6	212.9	802.7	79.1	186.9	536.7
May	5,629.2	945.7	12.3	231.7	701.7	3,886.0	1,020.1	69.6	310.0	739.2	943.1	589.5	214.5	797.5	79.3	174.3	543.9
June	5,623.4	956.3	12.2	238.1	706.0	3,900.6	1,024.0	69.9	311.9	743.0	934.3	600.7	216.8	766.5	79.4	159.2	527.9
July	5,609.0	956.5	12.3	239.2	705.0	3,900.6	1,027.0	69.9	313.0	745.1	930.0	599.5	216.1	751.9	79.5	157.4	515.0
August	5,616.4	955.0	12.1	239.4	703.5	3,902.9	1,027.3	69.2	312.1	745.5	935.8	597.9	215.1	758.5	80.6	160.8	517.1
September	5,601.2	947.8	11.9	237.6	698.3	3,866.1	1,021.5	68.5	309.3	737.7	939.5	577.0	212.6	787.3	80.3	183.1	523.9
October	5,617.7	942.8	11.9	236.1	694.8	3,876.0	1,029.4	69.6	308.6	743.0	948.0	566.4	211.0	798.9	80.0	186.6	532.3
November	5,624.2	937.4	11.6	227.7	698.1	3,885.0	1,049.3	69.5	308.0	741.7	950.1	552.8	213.6	801.8	80.4	185.4	536.0
December	5,615.2	935.8	11.3	221.8	702.7	3,885.6	1,055.1	69.8	311.0	735.1	949.6	552.3	212.7	793.8	80.5	182.2	531.1
2020																	
January	5,489.1	917.8	11.0	209.8	697.0	3,798.8	1,021.4	69.2	305.8	708.4	943.7	539.5	210.8	772.5	79.7	169.5	523.3
February	5,518.7	919.4	11.0	207.5	700.9	3,806.6	1,012.4	69.4	304.4	714.5	953.0	542.3	210.6	792.7	79.4	179.4	533.9
March	5,497.7	920.5	11.3	210.9	698.3	3,783.3	1,007.0	69.3	304.1	716.3	951.4	525.1	210.1	793.9	79.2	180.0	534.7

Ohio Metropolitan Statistical Areas (MSAs)

Developed by the United States Office of Management and Budget, Metropolitan Statistical Areas are integrated geographic regions comprised of at least one city or urban area (with a population of at least 50,000) and adjacent communities. Metropolitan Statistical Areas make it possible for federal statistical agencies to utilize the same boundaries when publishing statistical data.



- | | | |
|--|---|--|
| <p>A. Akron MSA</p> <p>B. Canton-Massillon MSA</p> <p>C. Cincinnati MSA,
including Dearborn, Ohio, and Union
Counties in Indiana; Boone, Bracken,
Campbell, Gallatin, Grant, Kenton, and
Pendleton Counties in
Kentucky</p> <p>D. Cleveland-Elyria MSA</p> <p>E. Columbus MSA</p> | <p>F. Dayton MSA</p> <p>G. *Huntington-Ashland MSA,
including Boyd and Greenup Counties in
Kentucky; Cabell, Lincoln, Putnam, and
Wayne Counties in West Virginia</p> <p>H. Lima MSA</p> <p>I. Mansfield MSA</p> <p>J. Springfield MSA</p> <p>K. Toledo MSA</p> | <p>L. Weirton-Stuebenville MSA,
including Brooke and Hancock Counties
in West Virginia</p> <p>M. *Wheeling MSA, including
Marshall and Ohio Counties in West
Virginia</p> <p>N. Youngstown-Warren-Boardman MSA,
including Mercer County in
Pennsylvania</p> |
|--|---|--|

*Data on West Virginia MSAs may be viewed at <http://lmi.workforcecwv.org>.

Akron Metropolitan Statistical Area Not Seasonally Adjusted

Portage and Summit Counties

Over-the-Month Change: Nonfarm payroll employment in the Akron metropolitan area totaled 332,100 in March 2020, a decrease of 1,400 jobs from February. Employment in the goods-producing sector, at 53,700, increased 600 with gains in mining, logging, and construction (+400) and manufacturing (+200). Employment in the private service-providing sector, at 232,400, decreased 2,000 as losses in leisure and hospitality (-1,600), professional and business services (-300), trade, transportation, and utilities (-100), and educational and health services (-100) exceeded gains in other services (+100).

Government employment, at 46,000, did not change as gains in state (+100) government were offset by losses in local government (-100). Federal government employment did not change over the month.



Over-the-Year Change: Nonagricultural wage and salary employment decreased 5,700 from March 2019 to March 2020. Goods-producing industries did not change as gains in mining, logging, and construction (+500) were offset by losses in manufacturing (-500). Private service-providing employment decreased 5,100. Employment losses in professional and business services (-1,900), leisure and hospitality (-1,700), educational and health services (-1,500), and trade, transportation, and utilities (-300) outpaced gains in financial activities (+200) and information (+100). Government employment decreased 600 as losses in state (-500) and local (-200) government surpassed gains in federal government (+100).

Civilian Labor Force (thousands)			Unemployment Rate
Total	Employed	Unemployed	
372.2	333.0	39.2	10.5%
366.0	332.9	33.0	9.0%
360.3	333.5	26.7	7.4%
358.9	331.4	27.4	7.6%
358.9	337.7	21.2	5.9%
358.2	340.4	17.8	5.0%
359.4	341.0	18.4	5.1%
360.5	342.2	18.3	5.1%
358.3	341.7	16.6	4.6%
359.7	344.3	15.3	4.3%
2019			
357.9	340.8	17.1	4.8%
358.7	342.6	16.1	4.5%
357.0	344.0	13.1	3.7%
357.5	344.4	13.0	3.6%
361.1	345.1	16.0	4.4%
363.3	346.7	16.6	4.6%
362.3	346.5	15.8	4.4%
360.2	345.8	14.4	4.0%
362.0	347.9	14.1	3.9%
361.1	347.2	13.8	3.8%
357.8	343.5	14.3	4.0%
2020			
356.4	337.5	18.9	5.3%
360.7	343.1	17.6	4.9%
355.4	335.3	20.1	5.6%

Nonagricultural Wage and Salary Employment (thousands)						
Total	Mfg.	Trade, Transport., and Utilities	Professional and Business Services	Educational and Health Services	Government	
2010	317.6	37.7	61.3	48.1	50.2	49.2
2011	320.8	38.9	62.3	48.9	50.6	48.7
2012	325.2	40.1	63.7	49.7	51.1	48.8
2013	326.6	39.9	64.1	50.2	51.6	48.0
2014	332.8	40.1	65.3	51.7	53.0	47.1
2015	337.8	40.4	66.4	52.6	54.5	46.4
2016	340.1	39.6	66.6	53.6	55.3	46.1
2017	340.9	39.3	66.9	53.2	55.3	45.7
2018	339.9	39.4	67.2	51.1	55.2	44.7
2019	340.1	39.8	67.0	49.8	56.0	44.4
2019						
February	336.5	39.9	65.9	49.2	55.7	46.3
March	337.8	40.0	65.8	49.1	55.8	46.6
April	342.3	39.9	66.7	50.1	56.2	46.6
May	342.4	39.9	67.0	50.5	56.4	44.0
June	339.5	40.0	67.3	50.4	56.3	40.0
July	339.5	39.9	67.4	50.5	55.8	40.1
August	340.2	39.8	67.1	50.7	55.9	40.9
September	341.8	39.5	66.6	49.9	55.7	45.5
October	343.0	39.4	67.2	49.5	56.5	46.1
November	343.6	39.6	68.2	49.4	56.5	46.7
December	340.1	39.7	68.0	48.5	55.6	46.2
2020						
January	330.3	39.2	66.0	47.0	54.3	43.9
February	333.5	39.3	65.6	47.5	54.4	46.0
March	332.1	39.5	65.5	47.2	54.3	46.0

Akron MSA

Nonagricultural Wage and Salary Employment^a

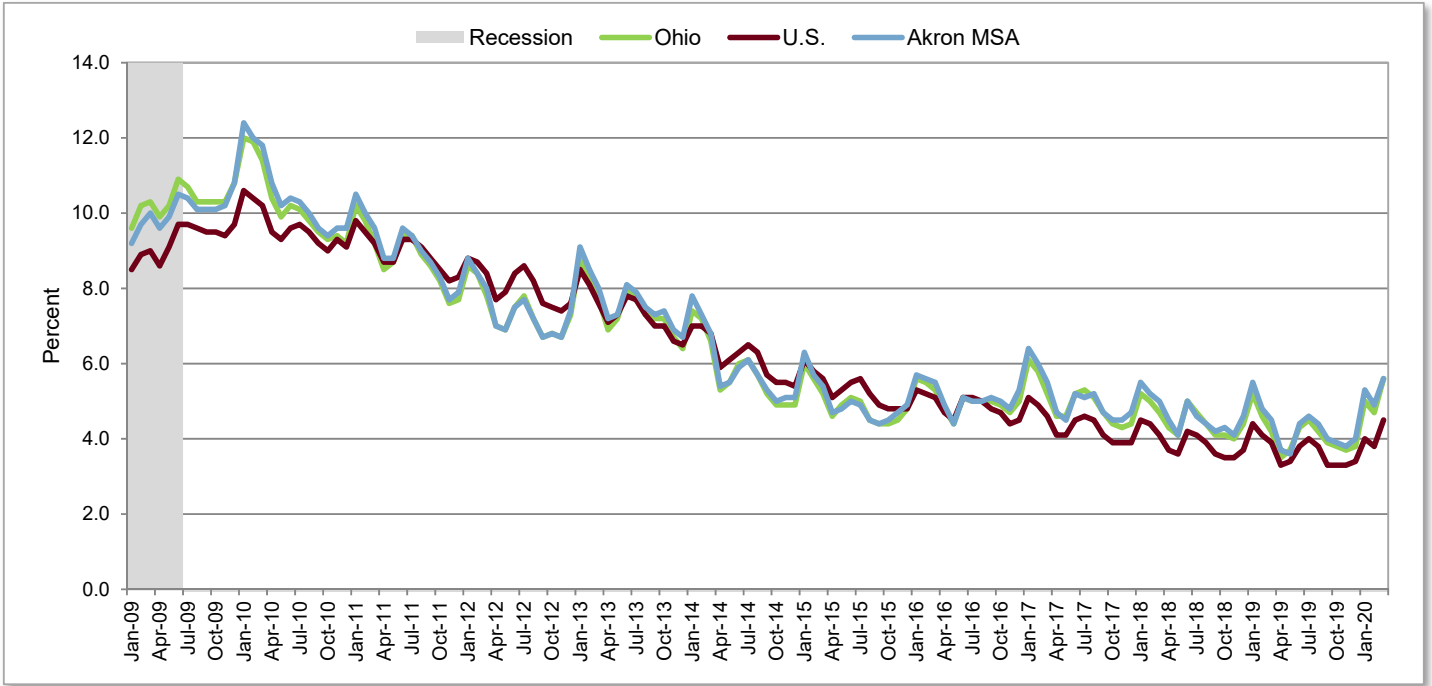
Not Seasonally Adjusted

	Employment (thousands)			Change (thousands)		Percent Change	
	Mar 2020 ^b	Feb 2020 ^c	Mar 2019 ^c	From Last Month	From Last Year	From Last Month	From Last Year
Total Nonagricultural	332.1	333.5	337.8	-1.4	-5.7	-0.4	-1.7
Total Private	286.1	287.5	291.2	-1.4	-5.1	-0.5	-1.8
Goods-Producing (Private)	53.7	53.1	53.7	0.6	0.0	1.1	0.0
Mining, Logging, and Construction	14.2	13.8	13.7	0.4	0.5	2.9	3.6
Manufacturing	39.5	39.3	40.0	0.2	-0.5	0.5	-1.3
Durable Goods ^d	22.9	22.7	23.2	0.2	-0.3	0.9	-1.3
Nondurable Goods ^e	16.6	16.6	16.8	0.2	-0.3	0.0	-1.2
Service-Providing (Private)	232.4	234.4	237.5	-2.0	-5.1	-0.9	-2.1
Trade, Transportation, and Utilities	65.5	65.6	65.8	-0.1	-0.3	-0.2	-0.5
Wholesale Trade	17.9	18.1	18.1	-0.2	-0.2	-1.1	-1.1
Retail Trade	34.7	34.5	35.4	0.2	-0.7	0.6	-2.0
Food and Beverage Stores	6.9	6.8	6.9	0.1	0.0	1.5	0.0
Health and Personal Care Stores	2.1	2.1	2.2	0.0	-0.1	0.0	-4.5
General Merchandise Stores	5.8	5.8	5.8	0.0	0.0	0.0	0.0
Transportation, Warehousing, and Utilities	12.9	13.0	12.3	-0.1	0.6	-0.8	4.9
Truck Transportation	5.8	5.7	5.8	0.1	0.0	1.8	0.0
Information	4.9	4.9	4.8	0.0	0.1	0.0	2.1
Financial Activities	15.4	15.4	15.2	0.0	0.2	0.0	1.3
Finance and Insurance	12.1	12.1	12.0	0.0	0.1	0.0	0.8
Professional and Business Services	47.2	47.5	49.1	-0.3	-1.9	-0.6	-3.9
Administrative, Support and Waste Services	17.0	17.0	17.7	0.0	-0.7	0.0	-4.0
Educational and Health Services	54.3	54.4	55.8	-0.1	-1.5	-0.2	-2.7
Health Care and Social Assistance	49.9	50.0	51.1	-0.1	-1.2	-0.2	-2.3
Leisure and Hospitality	31.9	33.5	33.6	-1.6	-1.7	-4.8	-5.1
Accommodation and Food Services	27.7	29.3	29.3	-1.6	-1.6	-5.5	-5.5
Other Services	13.2	13.1	13.2	0.1	0.0	0.8	0.0
Government	46.0	46.0	46.6	0.0	-0.6	0.0	-1.3
Federal Government	2.3	2.3	2.2	0.0	0.1	0.0	4.5
State Government	15.2	15.1	15.7	0.1	-0.5	0.7	-3.2
State Government Educational ^f Services	13.4	13.3	13.8	0.1	-0.4	0.8	-2.9
Local Government	28.5	28.6	28.7	-0.1	-0.2	-0.3	-0.7
Local Government Educational Services	15.1	15.2	15.3	-0.1	-0.2	-0.7	-1.3

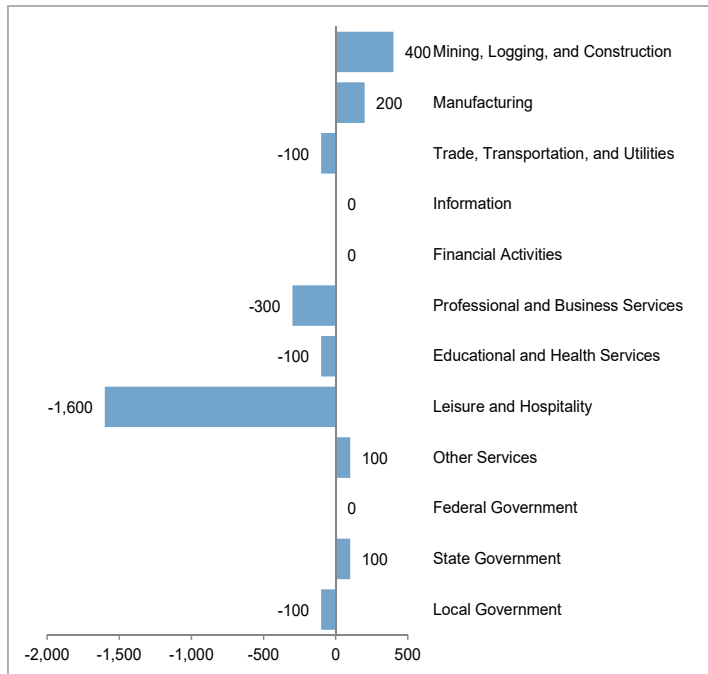
^aSee Technical Notes for concepts. ^bPreliminary. ^cRevised. ^dIncludes wood products; nonmetallic mineral products; primary metals; fabricated metal products; machinery manufacturing; computer and electronic products; electrical equipment and appliance manufacturing; furniture and related products; miscellaneous manufacturing. ^eIncludes food manufacturing; beverage and tobacco products; textile mills; textile product mills; apparel manufacturing; leather and allied products; paper manufacturing; printing and related support activities; petroleum and coal products; chemical manufacturing. ^fIncludes state universities. Excludes the agricultural extension service.

**Akron
Metropolitan Statistical Area
Not Seasonally Adjusted**

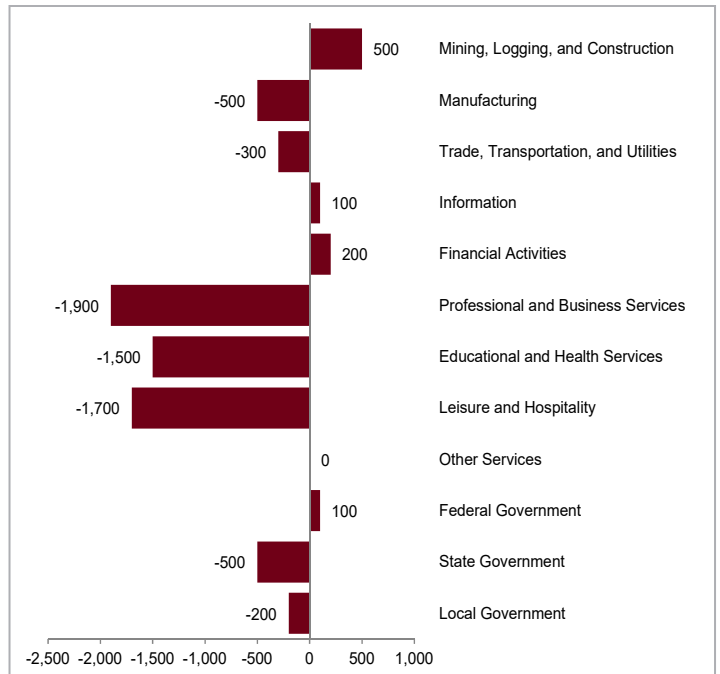
Unemployment Rates



**Akron MSA
Over-the-Month Change**



**Akron MSA
Over-the-Year Change**



Canton-Massillon Metropolitan Statistical Area Not Seasonally Adjusted

Carroll and Stark Counties



Over-the-Month Change: Nonfarm payroll employment in the Canton-Massillon metropolitan area totaled 170,200 in March 2020, an increase of 100 jobs from February. The goods-producing sector, at 34,600, increased 400 as gains in mining, logging, and construction (+500) surpassed losses in manufacturing (-100). Employment in private service-providing industries, at 115,600, decreased 200 as losses in educational and health services (-300) and professional and business services (-100) exceeded gains in trade, transportation, and utilities (+200). Government employment, at 20,000, decreased 100 in local government. Federal and state government employment did not change over the month.

Over-the-Year Change: Nonagricultural wage and salary employment decreased 1,600 from March 2019 to March 2020. The goods-producing sector lost 500 jobs in manufacturing. Private service-providing employment decreased 500. Employment losses in professional and business services (-300), financial activities (-200), trade, transportation, and utilities (-100), leisure and hospitality (-100), and other services (-100) outweighed gains in educational and health services (+200) and information (+100). Government employment decreased 600 in local government. Federal and state government employment did not change over the year.

Civilian Labor Force (thousands)			Unemployment Rate
Total	Employed	Unemployed	
206.2	182.7	23.5	11.4%
203.3	184.2	19.1	9.4%
201.7	186.5	15.1	7.5%
202.8	187.4	15.4	7.6%
201.8	190.0	11.8	5.8%
199.7	189.0	10.6	5.3%
199.8	188.7	11.2	5.6%
200.3	189.7	10.6	5.3%
199.0	189.2	9.8	4.9%
198.7	189.7	9.0	4.5%
197.6	187.6	10.1	5.1%
198.5	188.8	9.7	4.9%
197.4	189.6	7.8	4.0%
198.7	190.7	8.0	4.0%
199.6	190.6	9.0	4.5%
200.5	191.2	9.3	4.6%
199.8	190.9	8.9	4.5%
198.1	189.9	8.2	4.1%
200.0	191.6	8.3	4.2%
199.1	190.6	8.5	4.3%
197.4	188.6	8.9	4.5%
198.2	186.6	11.6	5.9%
200.0	189.3	10.7	5.4%
197.9	185.8	12.1	6.1%

	Nonagricultural Wage and Salary Employment (thousands)					
	Total	Mfg.	Trade, Transport., and Utilities	Professional and Business Services	Educational and Health Services	Government
2010	159.7	24.9	29.2	13.7	31.2	20.7
2011	162.9	26.2	29.8	14.0	31.6	20.5
2012	167.6	27.3	30.6	14.0	32.5	20.3
2013	170.8	28.1	30.7	14.4	33.0	20.1
2014	172.5	28.4	31.1	14.7	33.0	20.0
2015	172.1	28.6	31.5	14.2	32.7	19.9
2016	172.6	27.4	31.8	15.0	32.9	20.0
2017	173.7	26.7	31.3	15.9	33.4	20.4
2018	173.8	26.9	31.1	15.8	33.7	20.2
2019	173.1	26.7	31.0	16.3	33.8	20.0
2019						
February	170.9	27.1	30.5	15.5	33.9	20.4
March	171.8	26.9	30.6	15.8	33.8	20.6
April	173.8	26.8	30.9	16.3	34.2	20.6
May	175.2	26.8	31.1	16.6	33.8	20.7
June	174.1	26.9	31.1	16.6	33.0	19.5
July	173.4	26.8	31.1	16.6	32.9	19.0
August	173.6	26.6	31.0	16.8	33.5	19.0
September	173.3	26.3	30.9	16.5	33.8	19.9
October	174.4	26.5	30.7	16.6	34.4	20.1
November	174.2	26.6	31.3	16.5	34.4	20.1
December	172.5	26.6	31.4	16.0	34.1	20.0
2020						
January	169.2	26.5	30.3	15.5	34.0	19.6
February	170.1	26.5	30.3	15.6	34.3	20.1
March	170.2	26.4	30.5	15.5	34.0	20.0

Canton-Massillon MSA

Nonagricultural Wage and Salary Employment^a

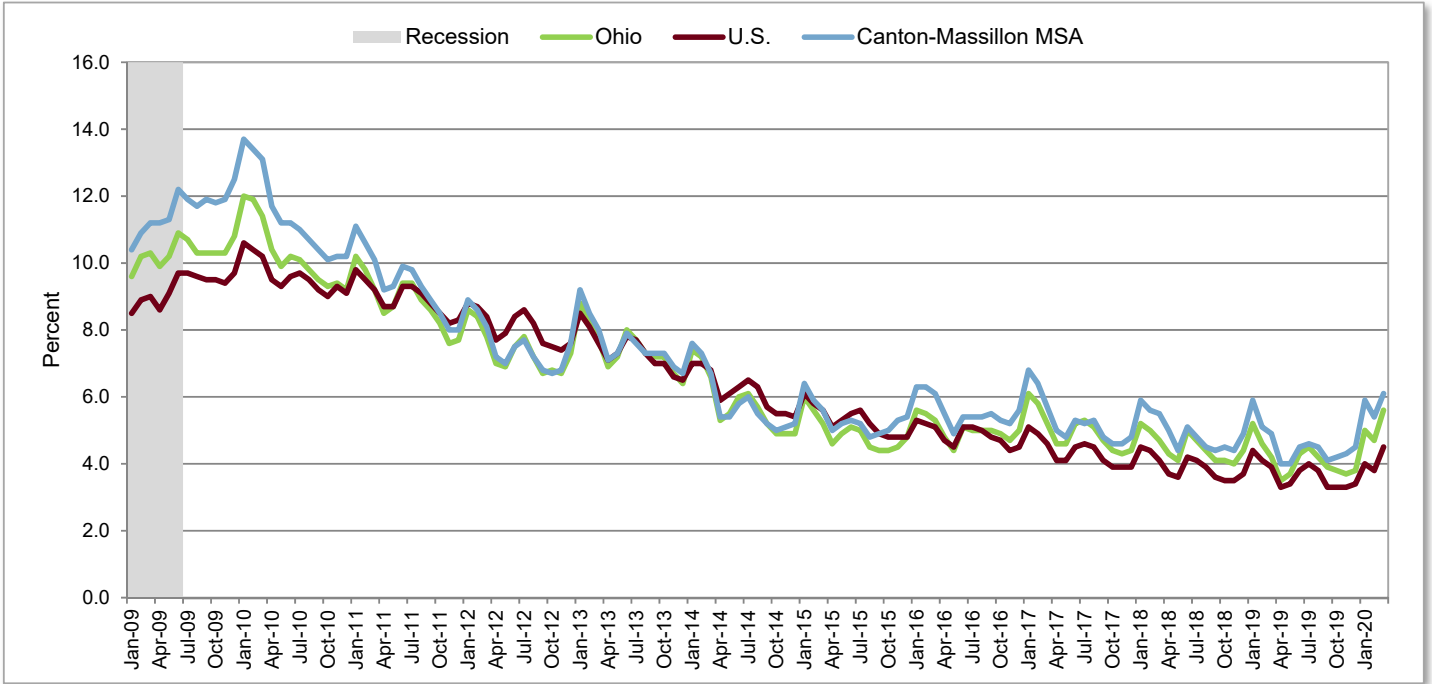
Not Seasonally Adjusted

	Employment (thousands)			Change (thousands)		Percent Change	
	Mar 2020 ^b	Feb 2020 ^c	Mar 2019 ^c	From Last Month	From Last Year	From Last Month	From Last Year
Total Nonagricultural	170.2	170.1	171.8	0.1	-1.6	0.1	-0.9
Total Private	150.2	150.0	151.2	0.2	-1.0	0.1	-0.7
Goods-Producing (Private)	34.6	34.2	35.1	0.4	-0.5	1.2	-1.4
Mining, Logging, and Construction	8.2	7.7	8.2	0.5	0.0	6.5	0.0
Manufacturing	26.4	26.5	26.9	-0.1	-0.5	-0.4	-1.9
Food Manufacturing	5.3	5.3	5.5	0.0	-0.2	0.0	-3.6
Service-Providing (Private)	115.6	115.8	116.1	-0.2	-0.5	-0.2	-0.4
Trade, Transportation, and Utilities	30.5	30.3	30.6	0.2	-0.1	0.7	-0.3
Wholesale Trade	6.2	6.2	6.2	0.0	0.0	0.0	0.0
Retail Trade	19.8	19.5	19.8	0.3	0.0	1.5	0.0
General Merchandise Stores	4.0	4.0	4.0	0.0	0.0	0.0	0.0
Transportation, Warehousing, and Utilities	4.5	4.6	4.6	-0.1	-0.1	-2.2	-2.2
Information	1.5	1.5	1.4	0.0	0.1	0.0	7.1
Financial Activities	7.3	7.3	7.5	0.0	-0.2	0.0	-2.7
Professional and Business Services	15.5	15.6	15.8	-0.1	-0.3	-0.6	-1.9
Educational and Health Services	34.0	34.3	33.8	-0.3	0.2	-0.9	0.6
Health Care and Social Assistance	29.4	29.3	29.0	0.1	0.4	0.3	1.4
Leisure and Hospitality	18.4	18.4	18.5	0.0	-0.1	0.0	-0.5
Accommodation and Food Services	16.7	16.7	16.8	0.0	-0.1	0.0	-0.6
Other Services	8.4	8.4	8.5	0.0	-0.1	0.0	-1.2
Government	20.0	20.1	20.6	-0.1	-0.6	-0.5	-2.9
Federal Government	1.0	1.0	1.0	0.0	0.0	0.0	0.0
State Government	1.4	1.4	1.4	0.0	0.0	0.0	0.0
Local Government	17.6	17.7	18.2	-0.1	-0.6	-0.6	-3.3
Local Government Educational Services	11.0	10.9	11.4	0.1	-0.4	0.9	-3.5

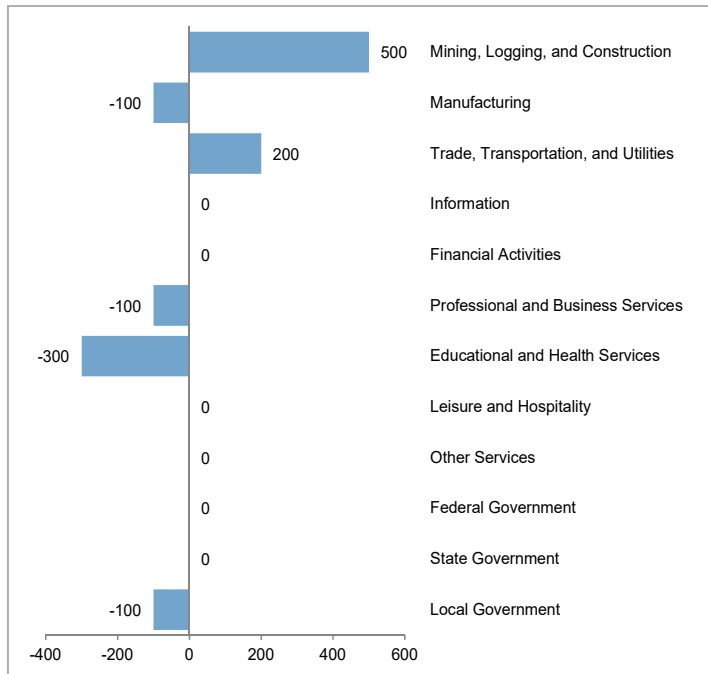
^aSee Technical Notes for concepts. ^bPreliminary. ^cRevised.

**Canton-Massillon
Metropolitan Statistical Area
Not Seasonally Adjusted**

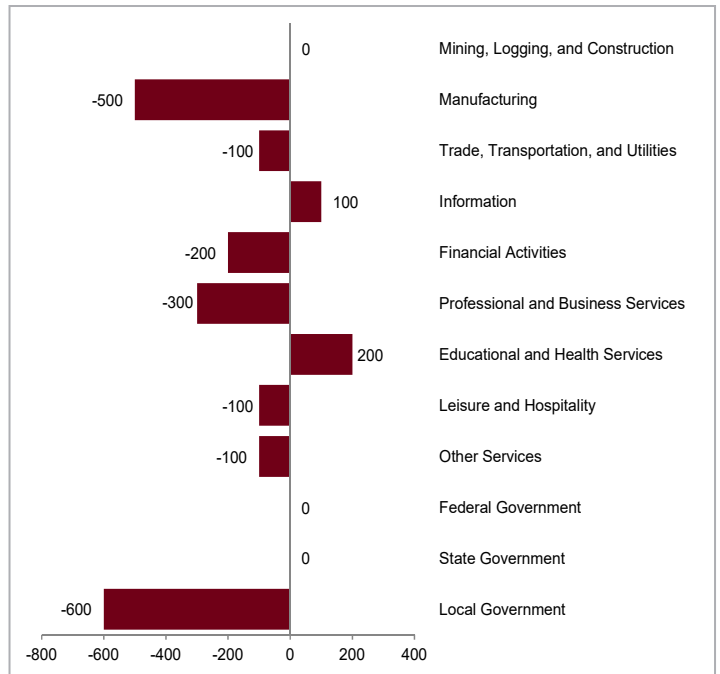
Unemployment Rates



**Canton-Massillon MSA
Over-the-Month Change**



**Canton-Massillon MSA
Over-the-Year Change**

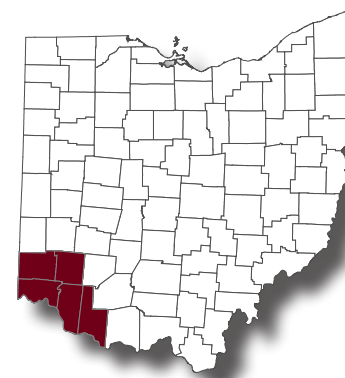


Cincinnati Metropolitan Statistical Area Not Seasonally Adjusted

In Ohio: Brown, Butler, Clermont, Hamilton, and Warren Counties

In Indiana: Dearborn, Ohio, and Union Counties

In Kentucky: Boone, Bracken, Campbell, Gallatin, Grant, Kenton, and Pendleton Counties



Over-the-Month Change: Nonfarm payroll employment in the Cincinnati metropolitan area totaled 1,097,300 in March 2020, a decrease of 3,600 jobs from February.

Employment in goods-producing industries, at 164,500, increased 200 as gains in mining, logging, and construction (+1,000) exceeded losses in manufacturing (-800). The private service-providing sector, at 801,700, decreased 5,200 jobs as losses in leisure and hospitality (-4,300), educational and health services (-900), other services (-600), and financial activities (-300) surpassed gains in trade, transportation, and utilities (+700) and professional and business services (+200). Information did not change over the month. Government employment, at 131,100, increased 1,400 with gains in state (+700), local (+600), federal (+100) government.

Over-the-Year Change: Nonagricultural wage and salary employment decreased 8,700 from March 2019 to March 2020.

The goods-producing sector decreased 1,200 as losses in mining, logging, and construction (-1,700) outpaced gains in manufacturing (+500). Private service-providing employment decreased 4,300. Employment losses in leisure and hospitality (-9,300), trade, transportation, and utilities (-3,200), other services (-1,200), financial activities (-600), and information (-200) exceeded gains in professional and business services (+6,200) and educational and health services (+4,000). Government employment decreased 3,200 with losses in state (-1,800), local (-800), and federal (-600) government.

Civilian Labor Force (thousands)			Unemployment Rate
Total	Employed	Unemployed	
1,096.0	987.5	108.5	9.9%
1,086.2	989.9	96.3	8.9%
1,076.5	996.6	79.9	7.4%
1,079.3	1,000.8	78.5	7.3%
1,074.8	1,015.5	59.3	5.5%
1,076.6	1,028.0	48.6	4.5%
1,091.1	1,043.2	47.9	4.4%
1,108.7	1,060.9	47.8	4.3%
1,117.7	1,073.4	44.2	4.0%
1,127.1	1,085.2	41.8	3.7%
1,114.3	1,070.1	44.2	4.0%
1,121.3	1,079.5	41.8	3.7%
1,113.8	1,079.1	34.7	3.1%
1,121.4	1,084.1	37.3	3.3%
1,141.3	1,094.8	46.5	4.1%
1,142.5	1,094.7	47.8	4.2%
1,136.2	1,091.9	44.3	3.9%
1,132.1	1,091.7	40.4	3.6%
1,132.1	1,092.5	39.6	3.5%
1,129.3	1,091.4	37.8	3.4%
1,128.1	1,090.7	37.3	3.3%
1,128.5	1,079.5	49.0	4.3%
1,130.9	1,086.2	44.7	4.0%
1,111.0	1,059.8	51.2	4.6%

Nonagricultural Wage and Salary Employment (thousands)						
Total	Mfg.	Trade, Transport., and Utilities	Professional and Business Services	Educational and Health Services	Government	
2010	981.7	103.1	194.9	148.5	147.3	132.1
2011	992.3	104.1	196.5	154.6	149.4	129.7
2012	1,008.7	105.4	199.4	160.8	152.3	129.0
2013	1,024.8	106.1	200.6	163.4	156.3	129.5
2014	1,042.0	110.1	202.8	166.8	159.5	129.5
2015	1,061.0	113.2	206.8	168.1	161.5	129.4
2016	1,080.0	114.7	210.6	168.5	163.2	130.2
2017	1,094.8	116.6	213.6	168.7	164.8	130.7
2018	1,107.9	118.6	219.6	170.2	166.6	130.4
2019	1,115.1	120.6	220.0	172.8	170.4	128.9
2019						
February	1,097.9	120.2	218.1	166.7	169.2	131.9
March	1,106.0	120.0	217.6	168.2	169.6	134.3
April	1,113.2	120.2	217.3	170.3	170.3	132.8
May	1,121.9	120.6	218.5	171.4	171.3	131.0
June	1,123.8	121.2	219.6	173.9	170.4	124.3
July	1,115.7	121.2	218.9	173.7	168.7	119.0
August	1,118.7	120.8	218.9	173.8	169.6	122.1
September	1,120.9	120.6	218.8	173.8	170.5	130.5
October	1,119.4	120.6	220.8	175.3	171.9	131.3
November	1,123.1	120.9	225.1	178.1	172.2	131.6
December	1,125.6	121.3	225.2	180.5	173.7	129.6
2020						
January	1,102.1	120.9	217.9	174.1	173.8	128.0
February	1,100.9	121.3	213.7	174.2	174.5	129.7
March	1,097.3	120.5	214.4	174.4	173.6	131.1

Cincinnati MSA

Nonagricultural Wage and Salary Employment^a

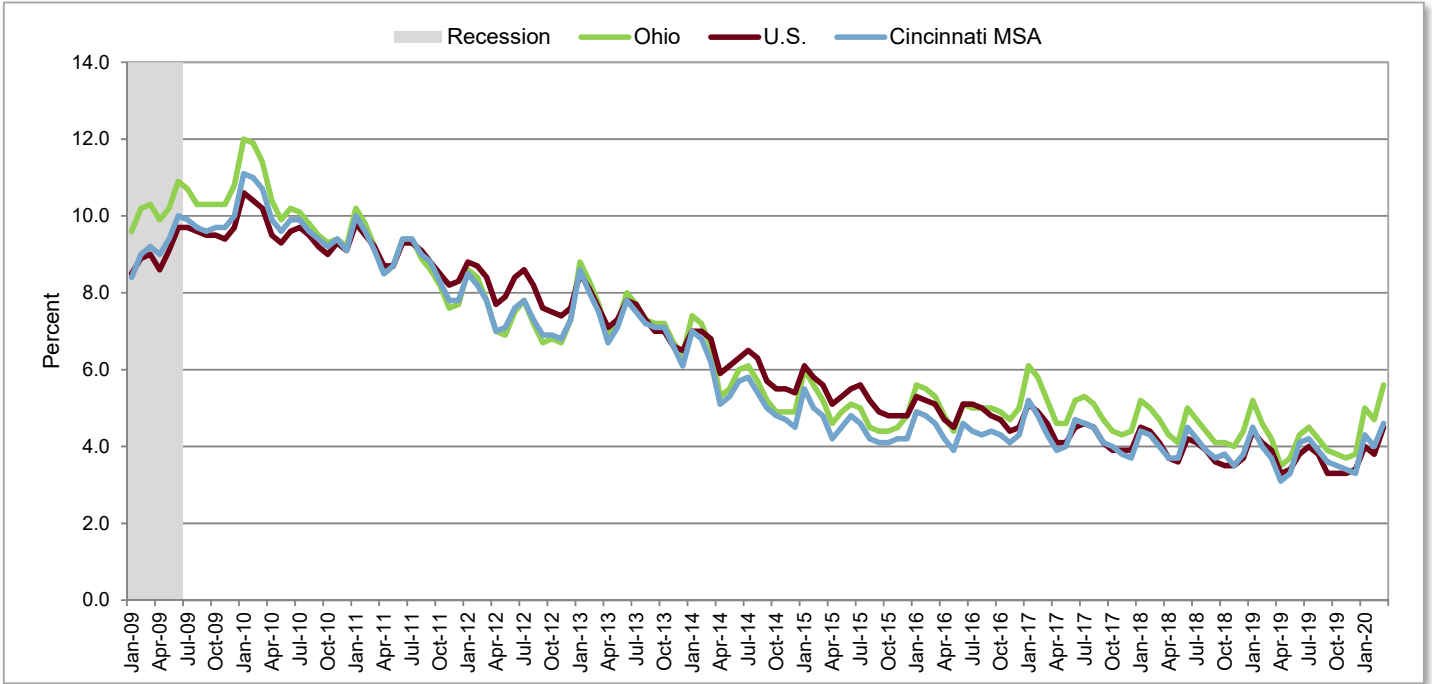
Not Seasonally Adjusted

	Employment (thousands)			Change (thousands)		Percent Change	
	Mar 2020 ^b	Feb 2020 ^c	Mar 2019 ^c	From Last Month	From Last Year	From Last Month	From Last Year
Total Nonfarm	1,097.3	1,100.9	1,106.0	-3.6	-8.7	-0.3	-0.8
Total Private	966.2	971.2	971.7	-5.0	-5.5	-0.5	-0.6
Goods-Producing (Private)	164.5	164.3	165.7	0.2	-1.2	0.1	-0.7
Mining, Logging, and Construction	44.0	43.0	45.7	1.0	-1.7	2.3	-3.7
Construction of Buildings	9.7	9.6	9.7	0.1	0.0	1.0	0.0
Specialty Trade Contractors	30.4	29.7	30.3	0.7	0.1	2.4	0.3
Manufacturing	120.5	121.3	120.0	-0.8	0.5	-0.7	0.4
Durable Goods ^d	70.1	70.8	70.3	-0.7	-0.2	-1.0	-0.3
Transportation Equipment	24.1	24.3	23.9	-0.2	0.2	-0.8	0.8
Motor Vehicle Parts	10.2	10.3	10.3	-0.1	-0.1	-1.0	-1.0
Nondurable Goods ^e	50.4	50.5	49.7	-0.1	0.7	-0.2	1.4
Chemical Manufacturing	12.7	12.6	12.5	0.1	0.2	0.8	1.6
Service-Providing (Private)	801.7	806.9	806.0	-5.2	-4.3	-0.6	-0.5
Trade, Transportation, and Utilities	214.4	213.7	217.6	0.7	-3.2	0.3	-1.5
Wholesale Trade	57.3	58.2	60.6	-0.9	-3.3	-1.5	-5.4
Merchant Wholesalers, Durable Goods	32.4	33.0	34.3	-0.6	-1.9	-1.8	-5.5
Merchant Wholesalers, Nondurable Goods	20.8	21.1	21.8	-0.3	-1.0	-1.4	-4.6
Retail Trade	104.0	102.5	105.5	1.5	-1.5	1.5	-1.4
Food and Beverage Stores	19.4	18.8	19.6	0.6	-0.2	3.2	-1.0
Grocery Stores	17.2	16.7	17.5	0.5	-0.3	3.0	-1.7
Health and Personal Care Stores	6.2	6.1	6.4	0.1	-0.2	1.6	-3.1
Clothing and Clothing Accessories Stores	7.2	7.4	7.9	-0.2	-0.7	-2.7	-8.9
General Merchandise Stores	19.0	19.1	19.7	-0.1	-0.7	-0.5	-3.6
Transportation, Warehousing, and Utilities	53.1	53.0	51.5	0.1	1.6	0.2	3.1
Transportation and Warehousing	49.9	50.2	48.8	-0.3	1.1	-0.6	2.3
Air Transportation	3.0	3.0	3.1	0.0	-0.1	0.0	-3.2
Information	13.3	13.3	13.5	0.0	-0.2	0.0	-1.5
Financial Activities	72.4	72.7	73.0	-0.3	-0.6	-0.4	-0.8
Finance and Insurance	59.2	59.4	59.1	-0.2	0.1	-0.3	0.2
Credit Intermediation and Related Activities	26.4	26.5	26.1	-0.1	0.3	-0.4	1.1
Insurance Carriers and Related Activities	26.5	26.5	26.0	0.0	0.5	0.0	1.9
Professional and Business Services	174.4	174.2	168.2	0.2	6.2	0.1	3.7
Professional, Scientific, and Technical Services	66.3	66.2	64.8	0.1	1.5	0.2	2.3
Management of Companies and Enterprises	39.0	39.0	38.6	0.0	0.4	0.0	1.0
Administrative, Support and Waste Services	69.1	69.0	64.8	0.1	4.3	0.1	6.6
Employment Services	30.3	30.4	28.9	-0.1	1.4	-0.3	4.8
Services to Buildings and Dwellings	15.3	14.5	14.0	0.8	1.3	5.5	9.3
Educational and Health Services	173.6	174.5	169.6	-0.9	4.0	-0.5	2.4
Educational Services	18.6	18.7	18.3	-0.1	0.3	-0.5	1.6
Health Care and Social Assistance	155.0	155.8	151.3	-0.8	3.7	-0.5	2.4
Hospitals	53.2	53.2	51.7	0.0	1.5	0.0	2.9
Leisure and Hospitality	113.6	117.9	122.9	-4.3	-9.3	-3.6	-7.6
Arts, Entertainment, and Recreation	19.6	19.1	22.0	0.5	-2.4	2.6	-10.9
Accommodation and Food Services	94.0	98.8	100.9	-4.8	-6.9	-4.9	-6.8
Other Services	40.0	40.6	41.2	-0.6	-1.2	-1.5	-2.9
Government	131.1	129.7	134.3	1.4	-3.2	1.1	-2.4
Federal Government	14.2	14.1	14.8	0.1	-0.6	0.7	-4.1
State Government	30.1	29.4	31.9	0.7	-1.8	2.4	-5.6
State Government Educational ^f Services	24.9	24.2	26.7	0.7	-1.8	2.9	-6.7
Local Government	86.8	86.2	87.6	0.6	-0.8	0.7	-0.9
Local Government Educational Services	50.7	50.5	51.0	0.2	-0.3	0.4	-0.6

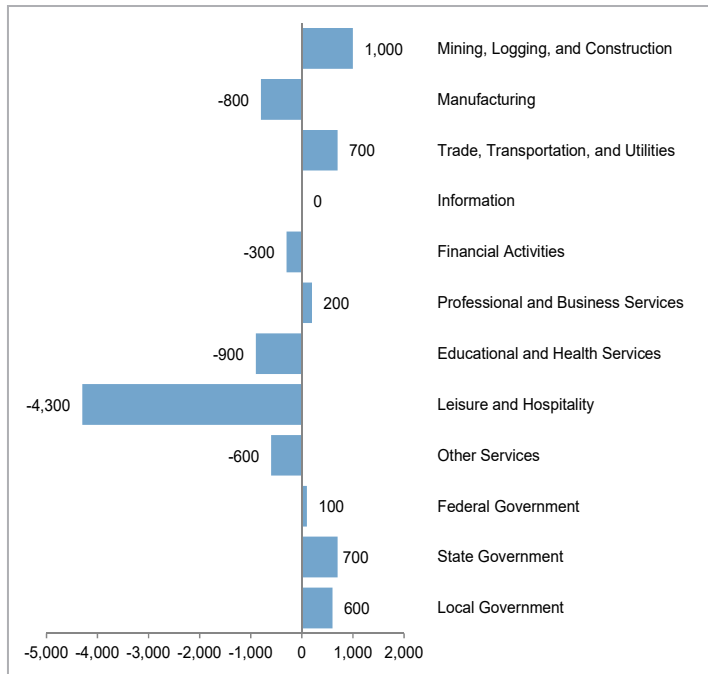
^aSee Technical Notes for concepts. ^bPreliminary. ^cRevised. ^dIncludes wood products; nonmetallic mineral products; primary metals; fabricated metal products; machinery manufacturing; computer and electronic products; electrical equipment and appliance manufacturing; furniture and related products; miscellaneous manufacturing. ^eIncludes food manufacturing; beverage and tobacco products; textile mills; textile product mills; apparel manufacturing; leather and allied products; paper manufacturing; printing and related support activities; petroleum and coal products; chemical manufacturing. ^fIncludes state universities. Excludes the agricultural extension service.

**Cincinnati
Metropolitan Statistical Area
Not Seasonally Adjusted**

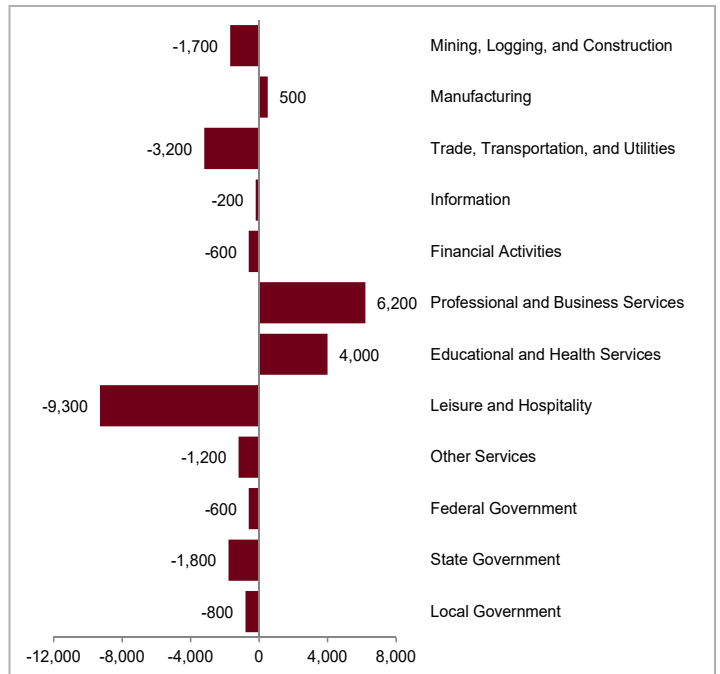
Unemployment Rates



**Cincinnati MSA
Over-the-Month Change**

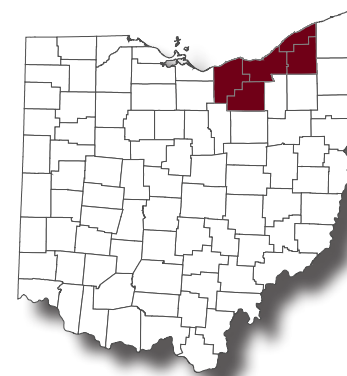


**Cincinnati MSA
Over-the-Year Change**



Cleveland-Elyria Metropolitan Statistical Area Not Seasonally Adjusted

Cuyahoga, Geauga, Lake, Lorain, and Medina Counties



Over-the-Month Change: Nonfarm payroll employment in the Cleveland-Elyria metropolitan area totaled 1,056,400 in March 2020, a decrease of 3,600 jobs from February. Goods-producing industries, at 161,100, increased 1,900 as gains in mining, logging, and construction (+2,100) exceeded losses in manufacturing (-200). Private service-providing employment, at 759,100, decreased 5,500. Losses in leisure and hospitality (-5,500), trade, transportation, and utilities (-200), educational and health services (-200), and other services (-100) surpassed gains in financial activities (+400) and professional and business services (+100). Information did not change over the month. Government employment, at 136,200, did not change over the month. Gains in state government (+100) were offset by losses in local government (-100). Federal government employment did not change over the month.

Over-the-Year Change: Nonagricultural wage and salary employment decreased 8,900 from March 2019 to March 2020. Goods-producing industries increased 1,300 as gains in mining, logging, and construction (+3,800) outweighed losses in manufacturing (-2,500). Private service-providing industries lost 7,700 jobs over the year. Losses in professional and business services (-4,500), leisure and hospitality (-2,400), financial activities (-900), educational and health services (-500), and information (-400) exceeded gains in trade, transportation, and utilities (+900) and other services (+100). Government employment decreased 2,500 as losses in local government (-2,600) surpassed gains in federal government (+100). State government employment did not change over the year.

Civilian Labor Force (thousands)			Unemployment Rate
Total	Employed	Unemployed	
1,052.0	964.1	87.9	8.4%
1,040.6	964.2	76.4	7.3%
1,035.3	967.6	67.7	6.5%
1,042.9	972.5	70.5	6.8%
1,039.2	977.0	62.2	6.0%
1,035.0	983.8	51.2	4.9%
1,043.0	988.0	55.0	5.3%
1,045.0	988.7	56.4	5.4%
1,045.3	997.1	48.1	4.6%
1,042.6	1,000.7	41.9	4.0%
2019			
1,043.1	993.5	49.7	4.8%
1,036.1	991.8	44.3	4.3%
1,041.4	1,003.9	37.5	3.6%
1,035.9	996.3	39.6	3.8%
1,052.0	1,004.4	47.6	4.5%
1,067.6	1,018.3	49.3	4.6%
1,049.8	1,007.5	42.3	4.0%
1,045.5	1,007.0	38.5	3.7%
1,039.1	1,004.3	34.8	3.3%
1,038.6	1,004.2	34.4	3.3%
1,026.1	990.2	35.9	3.5%
2020			
1,028.8	980.9	47.9	4.7%
1,036.9	984.2	52.6	5.1%
1,004.6	930.8	73.8	7.3%

Nonagricultural Wage and Salary Employment (thousands)						
Total	Mfg.	Trade, Transport., and Utilities	Professional and Business Services	Educational and Health Services	Government	
2010	990.9	116.5	176.0	133.7	186.2	138.5
2011	1,001.1	120.1	177.3	141.3	187.3	135.2
2012	1,019.5	123.5	180.8	145.4	191.9	134.8
2013	1,029.6	123.9	181.6	148.3	193.9	133.5
2014	1,036.6	124.3	182.5	150.7	194.0	133.8
2015	1,045.4	124.3	184.0	150.8	197.3	134.6
2016	1,055.3	121.1	184.7	153.1	201.6	136.3
2017	1,058.7	121.2	182.2	155.2	202.2	136.6
2018	1,070.2	123.7	182.2	158.8	203.8	137.6
2019	1,079.2	123.5	185.1	161.3	206.0	138.0
2019						
February	1,063.0	124.0	181.8	157.5	206.4	138.4
March	1,065.3	124.1	181.9	156.7	206.4	138.7
April	1,076.6	123.8	182.3	161.7	206.8	139.4
May	1,088.2	123.8	184.6	162.5	206.5	141.8
June	1,092.8	124.5	185.4	163.7	205.4	139.9
July	1,089.2	123.8	186.0	165.3	203.5	135.9
August	1,089.2	123.6	186.3	166.0	204.2	135.5
September	1,080.1	122.6	184.5	162.5	206.6	136.2
October	1,079.3	121.8	184.3	162.6	207.4	137.8
November	1,085.5	122.9	188.9	162.2	208.1	138.6
December	1,082.0	122.8	190.4	158.6	207.5	137.2
2020						
January	1,056.4	121.5	186.0	152.2	202.9	132.1
February	1,060.0	121.8	183.0	152.1	206.1	136.2
March	1,056.4	121.6	182.8	152.2	205.9	136.2

Cleveland-Elyria MSA

Nonagricultural Wage and Salary Employment^a

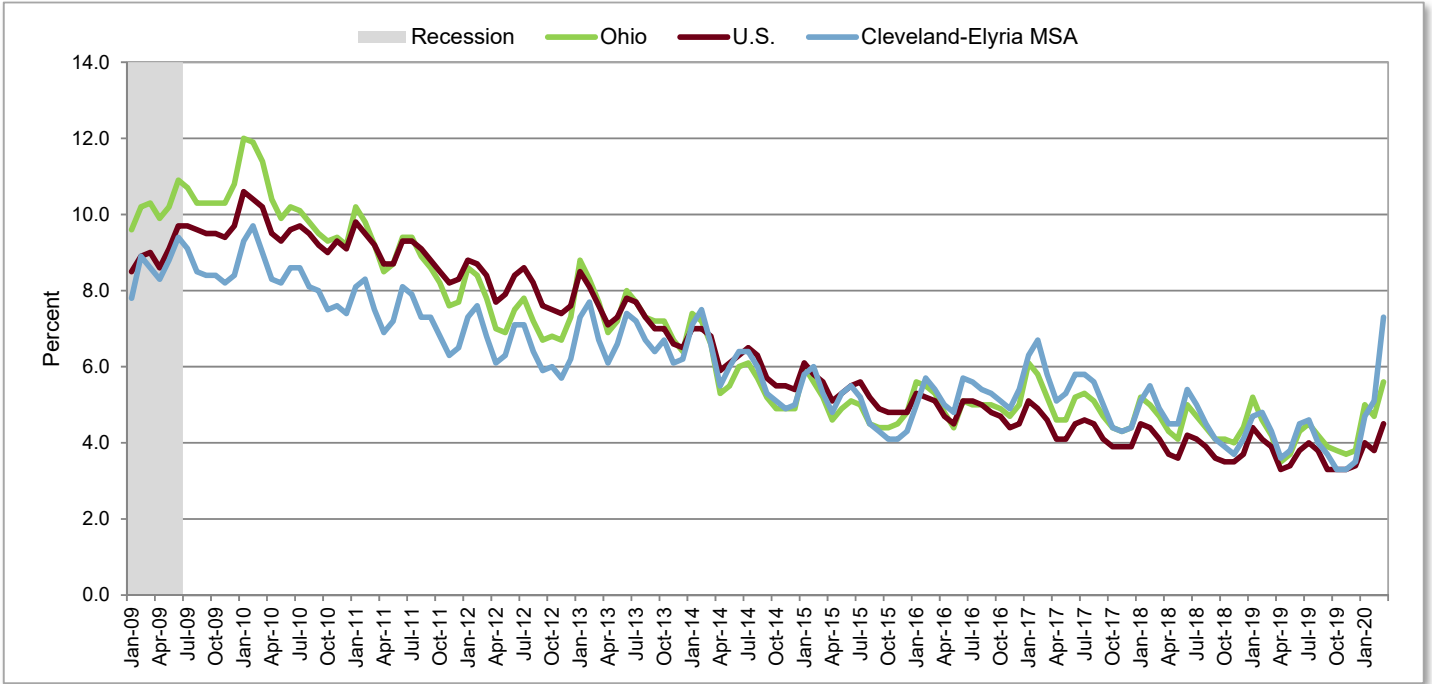
Not Seasonally Adjusted

	Employment (thousands)			Change (thousands)		Percent Change	
	Mar 2020 ^b	Feb 2020 ^c	Mar 2019 ^c	From Last Month	From Last Year	From Last Month	From Last Year
Total Nonagricultural	1,056.4	1,060.0	1,065.3	-3.6	-8.9	-0.3	-0.8
Total Private	920.2	923.8	926.6	-3.6	-6.4	-0.4	-0.7
Goods-Producing (Private)	161.1	159.2	159.8	1.9	1.3	1.2	0.8
Mining, Logging, and Construction	39.5	37.4	35.7	2.1	3.8	5.6	10.6
Specialty Trade Contractors	26.5	24.8	24.0	1.7	2.5	6.9	10.4
Manufacturing	121.6	121.8	124.1	-0.2	-2.5	-0.2	-2.0
Durable Goods ^d	85.9	86.2	88.4	-0.3	-2.5	-0.3	-2.8
Primary Metals	6.9	6.9	6.9	0.0	0.0	0.0	0.0
Fabricated Metal Products	26.5	26.5	28.1	0.0	-1.6	0.0	-5.7
Transportation Equipment	13.2	13.4	13.4	-0.2	-0.2	-1.5	-1.5
Motor Vehicle Parts	7.6	7.7	7.8	-0.1	-0.2	-1.3	-2.6
Nondurable Goods ^e	35.7	35.6	35.7	0.1	0.0	0.3	0.0
Service-Providing (Private)	759.1	764.6	766.8	-5.5	-7.7	-0.7	-1.0
Trade, Transportation, and Utilities	182.8	183.0	181.9	-0.2	0.9	-0.1	0.5
Wholesale Trade	52.1	52.1	52.6	0.0	-0.5	0.0	-1.0
Merchant Wholesalers, Durable Goods	30.2	30.7	30.6	-0.5	-0.4	-1.6	-1.3
Merchant Wholesalers, Nondurable Goods	17.3	17.2	17.5	0.1	-0.2	0.6	-1.1
Retail Trade	96.0	95.8	96.4	0.2	-0.4	0.2	-0.4
Food and Beverage Stores	19.8	19.5	20.3	0.3	-0.5	1.5	-2.5
Health and Personal Care Stores	8.1	8.1	8.3	0.0	-0.2	0.0	-2.4
General Merchandise Stores	17.6	17.7	18.0	-0.1	-0.4	-0.6	-2.2
Transportation, Warehousing, and Utilities	34.7	35.1	32.9	-0.4	1.8	-1.1	5.5
Transportation and Warehousing	31.9	32.4	30.2	-0.5	1.7	-1.5	5.6
Information	13.1	13.1	13.5	0.0	-0.4	0.0	-3.0
Financial Activities	66.1	65.7	67.0	0.4	-0.9	0.6	-1.3
Finance and Insurance	51.7	51.5	51.6	0.2	0.1	0.4	0.2
Credit Intermediation and Related Activities	17.1	17.2	17.3	-0.1	-0.2	-0.6	-1.2
Depository Credit Intermediation	12.5	12.5	12.8	0.0	-0.3	0.0	-2.3
Insurance Carriers and Related Activities	29.5	29.3	29.2	0.2	0.3	0.7	1.0
Insurance Carriers	19.0	19.0	18.6	0.0	0.4	0.0	2.2
Professional and Business Services	152.2	152.1	156.7	0.1	-4.5	0.1	-2.9
Professional, Scientific, and Technical Services	59.5	60.6	60.3	-1.1	-0.8	-1.8	-1.3
Management of Companies and Enterprises	29.5	29.9	29.6	-0.4	-0.1	-1.3	-0.3
Administrative, Support and Waste Services	63.2	61.6	66.8	1.6	-3.6	2.6	-5.4
Administrative and Support Services	60.5	58.6	63.9	1.9	-3.4	3.2	-5.3
Employment Services	28.4	28.4	29.7	0.0	-1.3	0.0	-4.4
Educational and Health Services	205.9	206.1	206.4	-0.2	-0.5	-0.1	-0.2
Educational Services	38.1	38.4	37.8	-0.3	0.3	-0.8	0.8
Health Care and Social Assistance	167.8	167.7	168.6	0.1	-0.8	0.1	-0.5
Hospitals	67.4	67.1	67.6	0.3	-0.2	0.4	-0.3
Nursing and Residential Care Facilities	32.9	32.9	32.9	0.0	0.0	0.0	0.0
Leisure and Hospitality	99.3	104.8	101.7	-5.5	-2.4	-5.2	-2.4
Arts, Entertainment, and Recreation	16.3	15.6	15.5	0.7	0.8	4.5	5.2
Accommodation and Food Services	83.0	89.2	86.2	-6.2	-3.2	-7.0	-3.7
Other Services	39.7	39.8	39.6	-0.1	0.1	-0.3	0.3
Government	136.2	136.2	138.7	0.0	-2.5	0.0	-1.8
Federal Government	19.5	19.5	19.4	0.0	0.1	0.0	0.5
State Government	7.8	7.7	7.8	0.1	0.0	1.3	0.0
State Government Educational ^f Services	3.4	3.3	3.4	0.1	0.0	3.0	0.0
Local Government	108.9	109.0	111.5	-0.1	-2.6	-0.1	-2.3
Local Government Educational Services	51.0	51.2	53.4	-0.2	-2.4	-0.4	-4.5

^aSee Technical Notes for concepts. ^bPreliminary. ^cRevised. ^dIncludes wood products; nonmetallic mineral products; primary metals; fabricated metal products; machinery manufacturing; computer and electronic products; electrical equipment and appliance manufacturing; furniture and related products; miscellaneous manufacturing. ^eIncludes food manufacturing; beverage and tobacco products; textile mills; textile product mills; apparel manufacturing; leather and allied products; paper manufacturing; printing and related support activities; petroleum and coal products; chemical manufacturing. ^fIncludes state universities. Excludes the agricultural extension service.

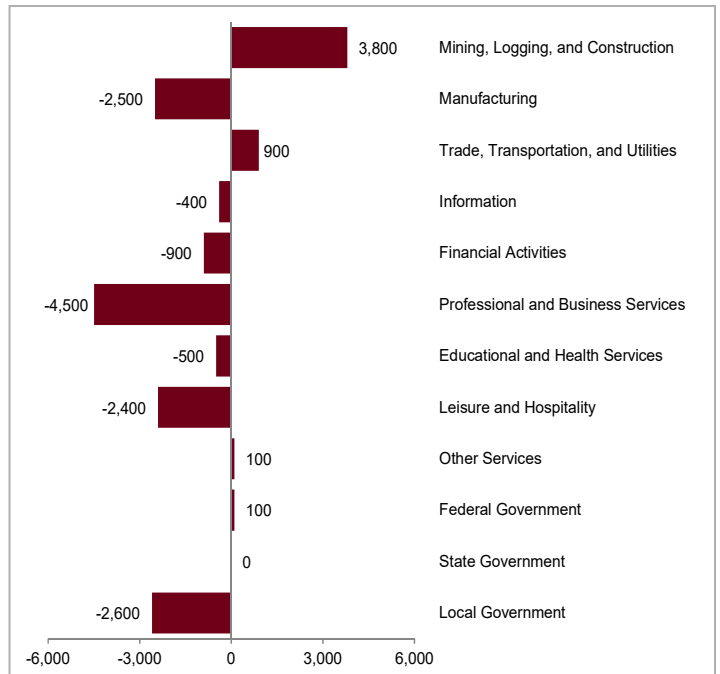
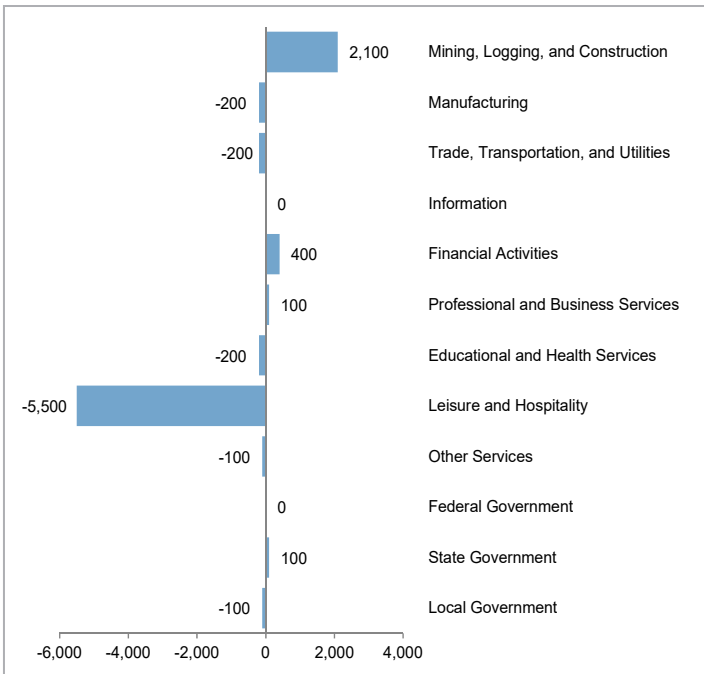
**Cleveland-Elyria
Metropolitan Statistical Area
Not Seasonally Adjusted**

Unemployment Rates



**Cleveland-Elyria MSA
Over-the-Month Change**

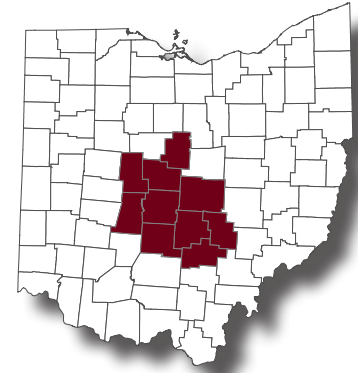
**Cleveland-Elyria MSA
Over-the-Year Change**



Columbus Metropolitan Statistical Area Not Seasonally Adjusted

Delaware, Fairfield, Franklin, Hocking, Licking, Madison, Morrow, Perry, Pickaway, and Union Counties

Over-the-Month Change: Nonfarm payroll employment in the Columbus metropolitan area totaled 1,107,500 in March 2020, a decrease of 2,800 jobs from February. Employment in goods-producing industries, at 117,200, decreased 500 in manufacturing. Mining, logging, and construction did not change over the month. Private service-providing employment, at 802,100, decreased 3,100. Losses in trade, transportation, and utilities (-3,100), leisure and hospitality (-1,900), other services (-700), and information (-100) exceeded gains in educational and health services (+1,600), professional and business services (+900), and financial activities (+200). Government employment, at 188,200, added 800 jobs as gains in local (+700) and state (+200) government surpassed losses in federal government (-100).



Over-the-Year Change: Nonagricultural wage and salary employment increased 12,500 from March 2019 to March 2020. Goods-producing industries added 3,100 jobs with gains in mining, logging, and construction (+2,900) and manufacturing (+200). Employment in the private service-providing sector increased 4,800. Gains in trade, transportation, and utilities (+4,300), educational and health services (+3,400), and financial activities (+300) outpaced losses in leisure and hospitality (-2,300), other services (-500), information (-200), and professional and business services (-200). Government employment increased 4,600 as gains in local (+3,100) and state (+1,600) government exceeded losses in federal government (-100).

Civilian Labor Force (thousands)			Unemployment Rate
Total	Employed	Unemployed	
1,004.3	913.9	90.4	9.0%
1,003.8	925.0	78.8	7.8%
1,003.9	939.0	64.9	6.5%
1,016.1	950.2	66.0	6.5%
1,027.6	976.8	50.8	4.9%
1,037.6	994.2	43.4	4.2%
1,055.5	1,011.1	44.4	4.2%
1,075.8	1,031.5	44.4	4.1%
1,085.8	1,043.9	41.9	3.9%
1,098.6	1,059.5	39.1	3.6%
1,084.4	1,043.8	40.6	3.7%
1,085.7	1,047.3	38.4	3.5%
1,080.3	1,047.8	32.4	3.0%
1,090.2	1,055.7	34.5	3.2%
1,102.9	1,060.7	42.2	3.8%
1,115.3	1,071.3	44.1	4.0%
1,112.6	1,070.5	42.1	3.8%
1,101.3	1,062.6	38.7	3.5%
1,108.6	1,071.1	37.4	3.4%
1,110.2	1,074.1	36.1	3.3%
1,105.9	1,070.1	35.8	3.2%
1,105.9	1,059.3	46.5	4.2%
1,116.5	1,074.1	42.3	3.8%
1,099.7	1,051.8	47.9	4.4%

Nonagricultural Wage and Salary Employment (thousands)						
Total	Mfg.	Trade, Transport, and Utilities	Professional and Business Services	Educational and Health Services	Government	
2010	920.3	65.0	177.9	146.8	126.2	166.4
2011	941.4	66.1	181.9	151.9	131.4	166.0
2012	968.0	68.0	185.0	159.2	136.3	165.8
2013	991.6	69.4	187.3	165.8	138.8	166.0
2014	1,016.6	70.0	191.9	175.5	144.0	167.2
2015	1,040.6	71.7	197.2	176.9	148.9	170.5
2016	1,064.3	71.6	201.9	180.5	153.2	174.0
2017	1,085.4	72.3	207.0	180.0	158.6	177.7
2018	1,100.4	73.3	208.6	181.4	161.8	180.0
2019	1,111.3	73.3	212.0	181.6	163.2	182.9
2019						
February	1,093.0	73.5	206.8	178.1	162.4	183.6
March	1,095.0	73.0	205.7	178.2	163.2	183.6
April	1,104.6	73.2	205.7	181.4	163.9	183.8
May	1,114.3	73.4	207.5	181.9	163.8	185.1
June	1,111.3	73.8	208.8	183.6	162.7	177.0
July	1,116.3	74.3	212.0	183.7	163.2	176.2
August	1,118.7	74.2	212.6	183.3	164.2	178.5
September	1,114.3	73.5	212.6	181.5	163.4	183.0
October	1,119.7	72.1	215.4	183.4	164.1	187.1
November	1,128.6	72.2	222.9	184.5	163.4	187.8
December	1,126.5	72.9	223.5	181.0	163.2	187.5
2020						
January	1,104.3	73.0	214.1	174.2	162.9	185.9
February	1,110.3	73.7	213.1	177.1	165.0	187.4
March	1,107.5	73.2	210.0	178.0	166.6	188.2

Columbus MSA

Nonagricultural Wage and Salary Employment^a

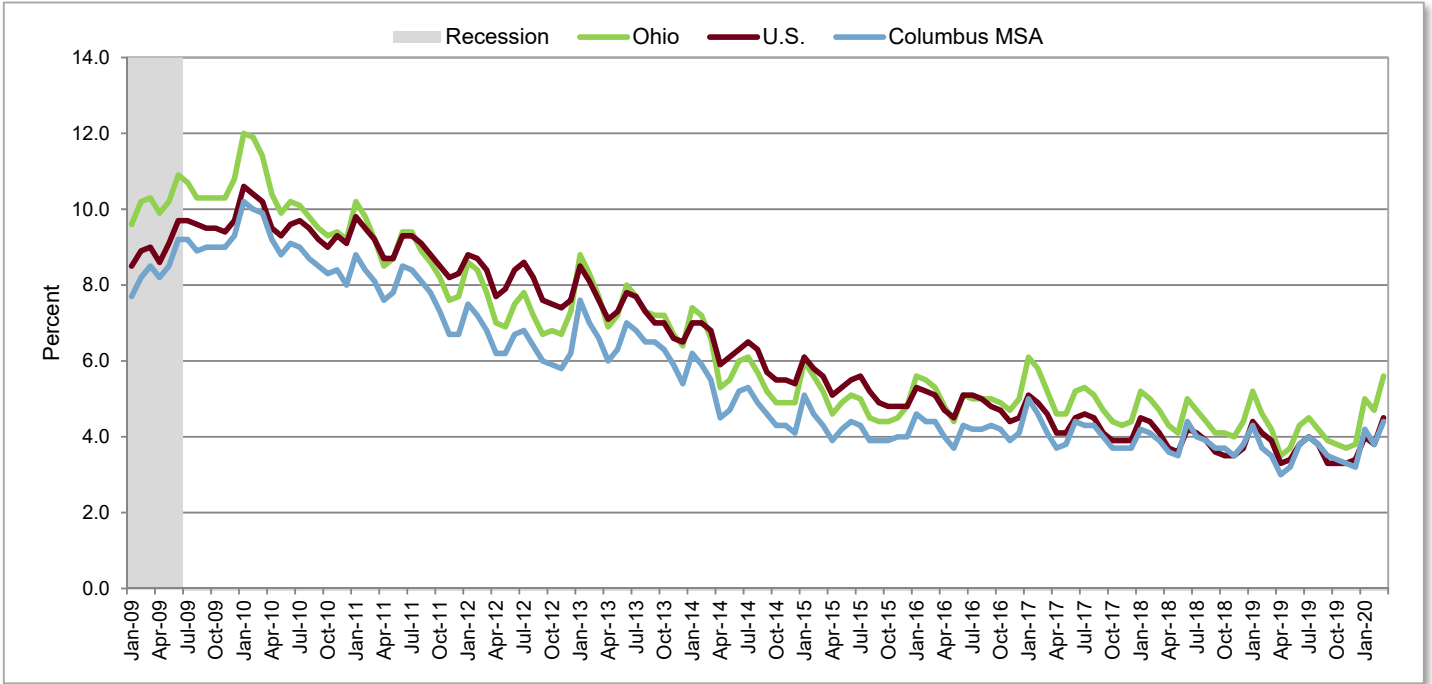
Not Seasonally Adjusted

	Employment (thousands)			Change (thousands)		Percent Change	
	Mar 2020 ^b	Feb 2020 ^c	Mar 2019 ^c	From Last Month	From Last Year	From Last Month	From Last Year
Total Nonagricultural	1,107.5	1,110.3	1,095.0	-2.8	12.5	-0.3	1.1
Total Private	919.3	922.9	911.4	-3.6	7.9	-0.4	0.9
Goods-Producing (Private)	117.2	117.7	114.1	-0.5	3.1	-0.4	2.7
Mining, Logging, and Construction	44.0	44.0	41.1	0.0	2.9	0.0	7.1
Specialty Trade Contractors	26.8	26.3	25.5	0.5	1.3	1.9	5.1
Manufacturing	73.2	73.7	73.0	-0.5	0.2	-0.7	0.3
Durable Goods ^d	45.8	46.2	45.7	-0.4	0.1	-0.9	0.2
Transportation Equipment	14.7	14.9	14.8	-0.2	-0.1	-1.3	-0.7
Nondurable Goods ^e	27.4	27.5	27.3	-0.1	0.1	-0.4	0.4
Food Manufacturing	6.9	7.0	7.1	-0.1	-0.2	-1.4	-2.8
Service-Providing (Private)	802.1	805.2	797.3	-3.1	4.8	-0.4	0.6
Trade, Transportation, and Utilities	210.0	213.1	205.7	-3.1	4.3	-1.5	2.1
Wholesale Trade	41.5	42.1	41.7	-0.6	-0.2	-1.4	-0.5
Merchant Wholesalers, Durable Goods	24.2	24.4	24.3	-0.2	-0.1	-0.8	-0.4
Retail Trade	97.8	98.0	99.9	-0.2	-2.1	-0.2	-2.1
Health and Personal Care Stores	5.5	5.5	5.5	0.0	0.0	0.0	0.0
General Merchandise Stores	17.3	17.3	17.6	0.0	-0.3	0.0	-1.7
Transportation, Warehousing, and Utilities	70.7	73.0	64.1	-2.3	6.6	-3.2	10.3
Transportation and Warehousing	66.3	68.6	59.6	-2.3	6.7	-3.4	11.2
Information	17.2	17.3	17.4	-0.1	-0.2	-0.6	-1.1
Financial Activities	87.0	86.8	86.7	0.2	0.3	0.2	0.3
Finance and Insurance	70.9	70.9	71.5	0.0	-0.6	0.0	-0.8
Credit Intermediation and Related Activities	26.7	26.8	26.5	-0.1	0.2	-0.4	0.8
Insurance Carriers and Related Activities	38.9	38.9	39.6	0.0	-0.7	0.0	-1.8
Insurance Carriers	26.9	26.9	27.6	0.0	-0.7	0.0	-2.5
Professional and Business Services	178.0	177.1	178.2	0.9	-0.2	0.5	-0.1
Professional, Scientific, and Technical Services	68.5	67.8	65.9	0.7	2.6	1.0	3.9
Computer Systems Design and Related Services	18.5	18.6	18.3	-0.1	0.2	-0.5	1.1
Management of Companies and Enterprises	37.4	37.4	38.1	0.0	-0.7	0.0	-1.8
Administrative, Support and Waste Services	72.1	71.9	74.2	0.2	-2.1	0.3	-2.8
Employment Services	29.6	29.8	31.4	-0.2	-1.8	-0.7	-5.7
Educational and Health Services	166.6	165.0	163.2	1.6	3.4	1.0	2.1
Health Care and Social Assistance	145.8	144.8	143.8	1.0	2.0	0.7	1.4
Hospitals	36.3	36.1	35.8	0.2	0.5	0.6	1.4
Leisure and Hospitality	102.4	104.3	104.7	-1.9	-2.3	-1.8	-2.2
Accommodation and Food Services	87.5	90.9	90.9	-3.4	-3.4	-3.7	-3.7
Food Services and Drinking Places	79.2	82.2	82.9	-3.0	-3.7	-3.6	-4.5
Other Services	40.9	41.6	41.4	-0.7	-0.5	-1.7	-1.2
Government	188.2	187.4	183.6	0.8	4.6	0.4	2.5
Federal Government	14.4	14.5	14.5	-0.1	-0.1	-0.7	-0.7
State Government	81.1	80.9	79.5	0.2	1.6	0.2	2.0
State Government Educational ^f Services	37.9	37.8	37.1	0.1	0.8	0.3	2.2
Local Government	92.7	92.0	89.6	0.7	3.1	0.8	3.5
Local Government Educational Services	54.3	53.6	51.8	0.7	2.5	1.3	4.8

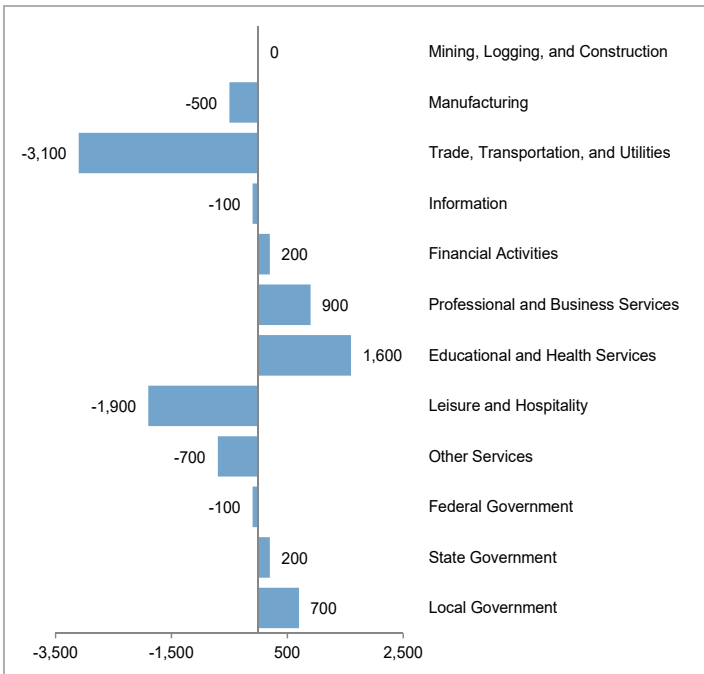
^aSee Technical Notes for concepts. ^bPreliminary. ^cRevised. ^dIncludes wood products; nonmetallic mineral products; primary metals; fabricated metal products; machinery manufacturing; computer and electronic products; electrical equipment and appliance manufacturing; furniture and related products; miscellaneous manufacturing. ^eIncludes food manufacturing; beverage and tobacco products; textile mills; textile product mills; apparel manufacturing; leather and allied products; paper manufacturing; printing and related support activities; petroleum and coal products; chemical manufacturing. ^fIncludes state universities. Excludes the agricultural extension service.

**Columbus
Metropolitan Statistical Area
Not Seasonally Adjusted**

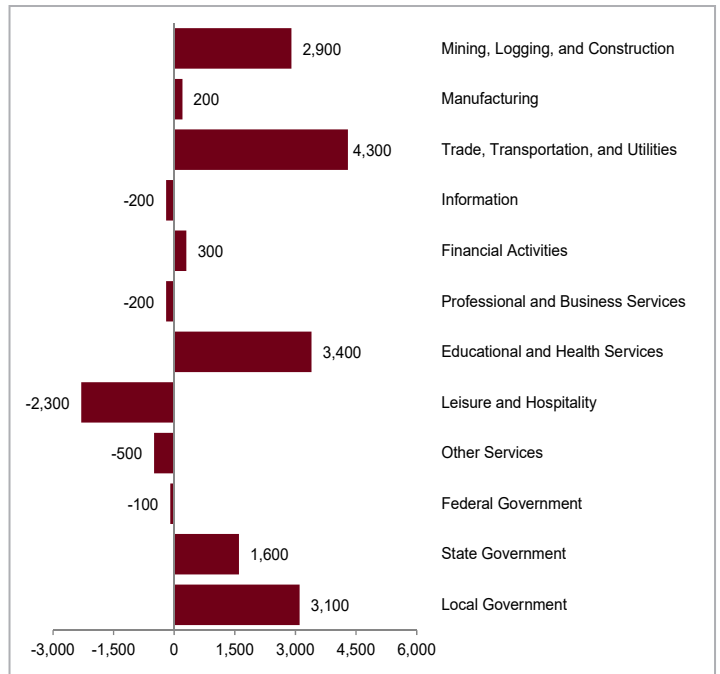
Unemployment Rates



**Columbus MSA
Over-the-Month Change**



**Columbus MSA
Over-the-Year Change**



Dayton Metropolitan Statistical Area Not Seasonally Adjusted

Greene, Miami, and Montgomery Counties



Over-the-Month Change: Nonfarm payroll employment in the Dayton metropolitan area totaled 389,300 in March 2020, an increase of 2,100 jobs from February. Employment in goods-producing industries, at 56,800, did not change over the month as gains in mining, logging, and construction (+100) were offset by losses in manufacturing (-100). Private service-providing employment, at 271,300, increased 2,400 with gains in educational and health services (+800), leisure and hospitality (+700), professional and business services (+400), trade, transportation, and utilities (+200), financial activities (+200), and other services (+100). Government employment, at 61,200, decreased 300 with losses in local (-200) and federal (-100) government. State government employment did not change over the month.

Over-the-Year Change: Nonagricultural wage and salary employment increased 600 from March 2019 to March 2020. Goods-producing industries added 100 jobs in manufacturing. The private service-providing sector added 1,800 jobs. Gains in educational and health services (+3,400) and leisure and hospitality (+200) surpassed losses in trade, transportation, and utilities (-800), professional and business services (-500), information (-400), and financial activities (-100). Government employment decreased 1,300 as losses in local (-1,300) and state (-100) government outweighed gains in federal government (+100).

Civilian Labor Force (thousands)			Unemployment Rate
Total	Employed	Unemployed	
401.8	357.8	44.0	11.0%
395.4	358.5	36.9	9.3%
387.4	357.2	30.2	7.8%
382.6	352.5	30.1	7.9%
380.7	358.4	22.3	5.9%
381.4	363.1	18.3	4.8%
384.0	365.7	18.3	4.8%
387.4	369.3	18.1	4.7%
387.4	370.6	16.8	4.3%
389.9	374.2	15.7	4.0%
2019			
385.9	369.5	16.4	4.2%
387.3	372.1	15.3	3.9%
384.8	371.8	13.0	3.4%
387.9	373.7	14.1	3.6%
391.8	374.9	16.9	4.3%
394.9	377.3	17.6	4.5%
393.5	376.7	16.8	4.3%
390.1	374.7	15.3	3.9%
394.3	378.7	15.6	4.0%
391.4	377.1	14.3	3.7%
390.7	376.5	14.2	3.6%
2020			
391.5	373.0	18.5	4.7%
392.2	375.3	16.9	4.3%
389.1	370.2	18.9	4.9%

	Nonagricultural Wage and Salary Employment (thousands)					
	Total	Mfg.	Trade, Transport., and Utilities	Professional and Business Services	Educational and Health Services	Government
2010	360.7	36.0	60.1	45.4	67.8	64.2
2011	365.4	37.7	61.3	46.8	68.7	64.2
2012	368.8	38.5	62.8	47.4	69.2	63.3
2013	368.3	38.3	63.3	47.4	69.0	62.4
2014	372.5	38.9	64.3	48.9	69.7	62.0
2015	379.8	40.0	65.6	50.3	71.2	62.7
2016	384.8	41.2	65.3	50.8	72.8	63.0
2017	388.3	42.0	65.6	51.2	73.7	62.6
2018	390.2	43.0	66.2	52.3	74.0	62.0
2019	391.9	43.8	65.3	52.1	75.3	62.1
2019						
February	386.3	43.8	64.7	51.1	74.4	62.2
March	388.7	43.8	64.8	51.3	74.7	62.5
April	391.5	43.7	64.8	52.5	74.9	62.9
May	394.1	43.7	65.4	53.2	75.4	62.2
June	392.2	44.0	65.3	52.6	73.9	61.0
July	392.4	44.0	65.1	53.1	73.7	60.8
August	393.1	43.7	65.3	52.7	74.4	61.3
September	392.2	43.5	65.0	52.3	75.1	62.4
October	395.3	43.9	65.0	52.3	77.2	62.7
November	395.3	44.0	66.1	51.8	77.4	63.2
December	395.4	44.3	66.6	51.5	77.9	62.8
2020						
January	388.2	43.7	64.5	50.5	77.5	60.9
February	387.2	44.0	63.8	50.4	77.3	61.5
March	389.3	43.9	64.0	50.8	78.1	61.2

Dayton MSA

Nonagricultural Wage and Salary Employment^a

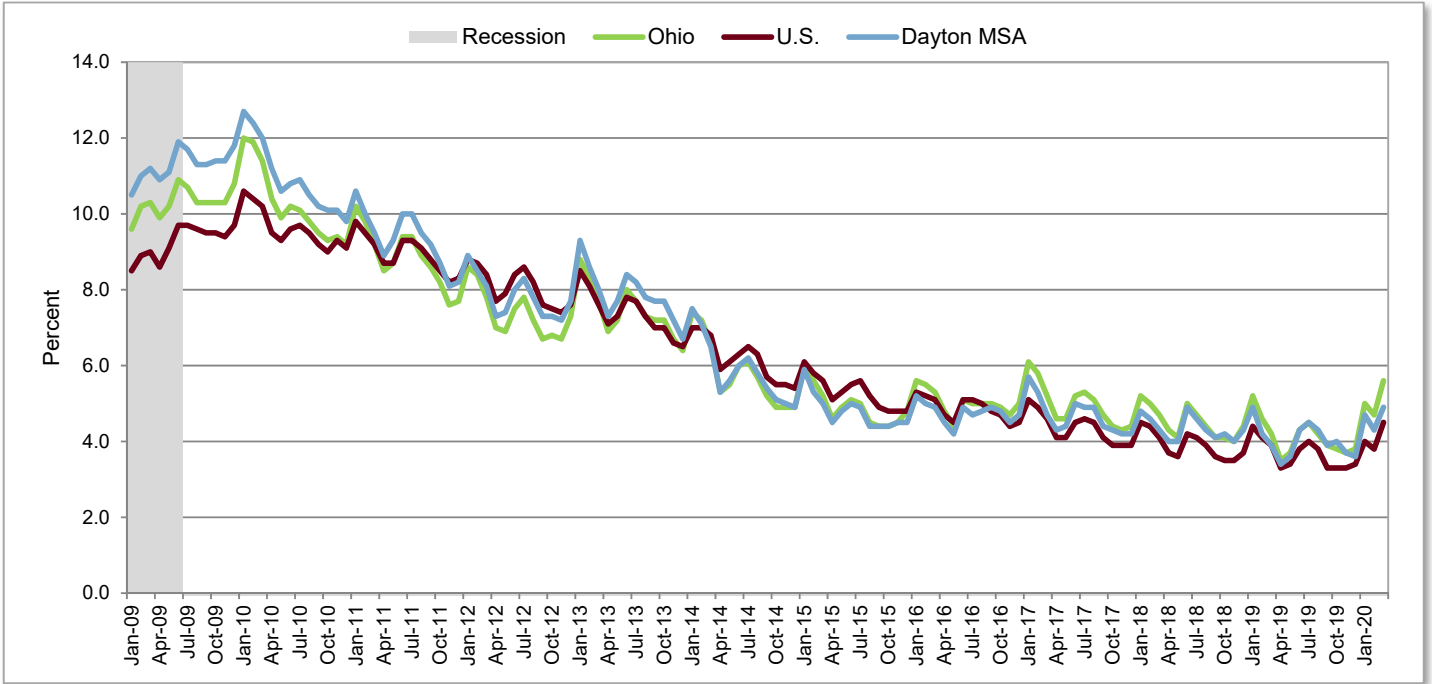
Not Seasonally Adjusted

	Employment (thousands)			Change (thousands)		Percent Change	
	Mar 2020 ^b	Feb 2020 ^c	Mar 2019 ^c	From Last Month	From Last Year	From Last Month	From Last Year
Total Nonagricultural	389.3	387.2	388.7	2.1	0.6	0.5	0.2
Total Private	328.1	325.7	326.2	2.4	1.9	0.7	0.6
Goods-Producing (Private)	56.8	56.8	56.7	0.0	0.1	0.0	0.2
Mining, Logging, and Construction	12.9	12.8	12.9	0.1	0.0	0.8	0.0
Manufacturing	43.9	44.0	43.8	-0.1	0.1	-0.2	0.2
Durable Goods ^d	33.2	33.2	33.3	0.0	-0.1	0.0	-0.3
Transportation Equipment	7.8	7.8	7.6	0.0	0.2	0.0	2.6
Service-Providing (Private)	271.3	268.9	269.5	2.4	1.8	0.9	0.7
Trade, Transportation, and Utilities	64.0	63.8	64.8	0.2	-0.8	0.3	-1.2
Wholesale Trade	13.9	14.0	14.1	-0.1	-0.2	-0.7	-1.4
Retail Trade	37.7	37.2	37.9	0.5	-0.2	1.3	-0.5
General Merchandise Stores	7.4	7.4	7.7	0.0	-0.3	0.0	-3.9
Transportation, Warehousing, and Utilities	12.4	12.6	12.8	-0.2	-0.4	-1.6	-3.1
Transportation and Warehousing	11.8	11.9	12.0	-0.1	-0.2	-0.8	-1.7
Information	7.5	7.5	7.9	0.0	-0.4	0.0	-5.1
Financial Activities	18.1	17.9	18.2	0.2	-0.1	1.1	-0.5
Finance and Insurance	14.2	14.2	14.1	0.0	0.1	0.0	0.7
Professional and Business Services	50.8	50.4	51.3	0.4	-0.5	0.8	-1.0
Professional, Scientific, and Technical Services	27.1	26.9	26.2	0.2	0.9	0.7	3.4
Management of Companies and Enterprises	5.2	5.1	5.1	0.1	0.1	2.0	2.0
Administrative, Support and Waste Services	18.5	18.4	20.0	0.1	-1.5	0.5	-7.5
Educational and Health Services	78.1	77.3	74.7	0.8	3.4	1.0	4.6
Health Care and Social Assistance	64.8	64.7	62.9	0.1	1.9	0.2	3.0
Hospitals	19.3	19.3	18.9	0.0	0.4	0.0	2.1
Leisure and Hospitality	39.0	38.3	38.8	0.7	0.2	1.8	0.5
Other Services	13.8	13.7	13.8	0.1	0.0	0.7	0.0
Government	61.2	61.5	62.5	-0.3	-1.3	-0.5	-2.1
Federal Government	19.1	19.2	19.0	-0.1	0.1	-0.5	0.5
State Government	6.4	6.4	6.5	0.0	-0.1	0.0	-1.5
State Government Educational ^e Services	5.2	5.2	5.3	0.0	-0.1	0.0	-1.9
Local Government	35.7	35.9	37.0	-0.2	-1.3	-0.6	-3.5
Local Government Educational Services	20.2	20.3	21.3	-0.1	-1.1	-0.5	-5.2

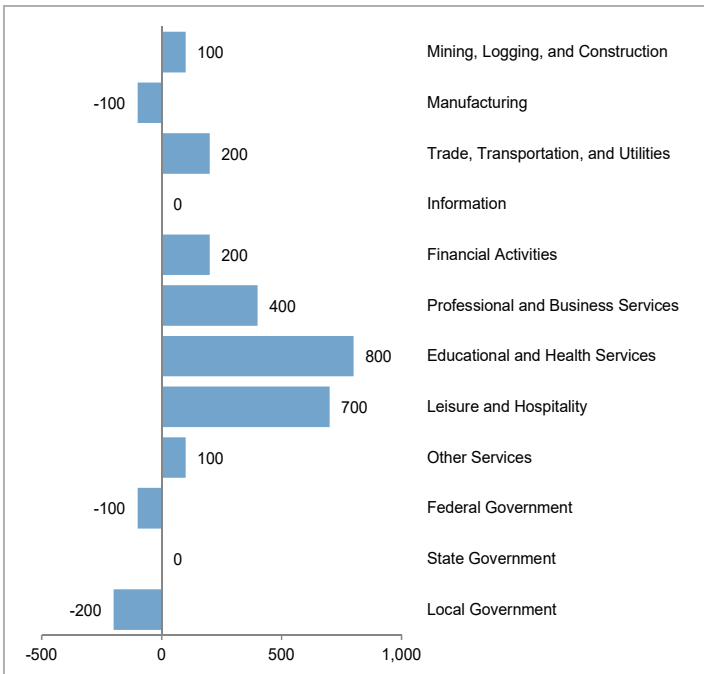
^aSee Technical Notes for concepts. ^bPreliminary. ^cRevised. ^dIncludes wood products; nonmetallic mineral products; primary metals; fabricated metal products; machinery manufacturing; computer and electronic products; electrical equipment and appliance manufacturing; furniture and related products; miscellaneous manufacturing. ^eIncludes state universities. Excludes the agricultural extension service.

**Dayton
Metropolitan Statistical Area
Not Seasonally Adjusted**

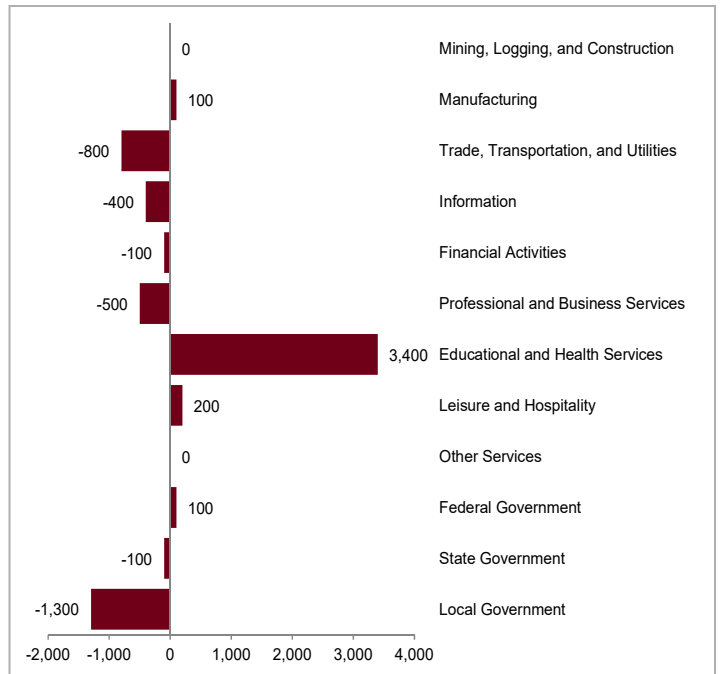
Unemployment Rates



**Dayton MSA
Over-the-Month Change**



**Dayton MSA
Over-the-Year Change**



Lima Metropolitan Statistical Area Not Seasonally Adjusted

Allen County

Over-the-Month Change: Nonfarm payroll employment in the Lima metropolitan area totaled 51,600 in March 2020, a decrease of 200 jobs from February. Employment in goods-producing industries, at 11,100, did not change over the month as gains in mining, logging, and construction (+100) were offset by losses in manufacturing (-100). Private service-providing employment, at 34,500, decreased 100 as losses in scattered industries (-200), professional and business services (-100), and leisure and hospitality (-100) outpaced gains in trade, transportation, and utilities (+200) and educational and health services (+100). Government employment, at 6,000, decreased 100 in local government. Federal and state government employment did not change over the month.



Over-the-Year Change: Nonagricultural wage and salary employment decreased 1,100 from March 2019 to March 2020. Goods-producing industries lost 100 jobs in mining, logging, and construction. The private service-providing sector decreased 800 jobs as losses in scattered industries (-600), educational and health services (-200), leisure and hospitality (-200), and professional and business services (-100) exceeded gains in trade, transportation, and utilities (+300). Government employment decreased 200 in local government. Federal and state government employment did not change over the year.

Civilian Labor Force (thousands)			Unemployment Rate
Total	Employed	Unemployed	
52.0	46.4	5.6	10.7%
51.0	46.1	4.9	9.5%
49.9	46.1	3.8	7.7%
49.5	45.6	3.9	7.8%
48.3	45.5	2.8	5.8%
47.8	45.5	2.3	4.9%
48.2	45.8	2.4	5.0%
48.6	46.1	2.4	5.0%
47.9	45.8	2.1	4.5%
47.9	45.9	1.9	4.0%
2019			
47.6	45.6	2.0	4.3%
47.7	45.8	1.9	4.0%
47.5	46.0	1.6	3.3%
47.9	46.3	1.6	3.4%
48.3	46.3	2.1	4.3%
48.6	46.3	2.3	4.7%
48.4	46.4	2.0	4.2%
47.6	45.8	1.8	3.9%
47.7	45.8	1.8	3.8%
47.7	45.9	1.8	3.7%
47.4	45.6	1.8	3.8%
2020			
47.8	45.3	2.5	5.3%
48.1	45.7	2.3	4.9%
47.5	44.8	2.7	5.7%

2010
2011
2012
2013
2014
2015
2016
2017
2018
2019
 February
 March
 April
 May
 June
 July
 August
 September
 October
 November
 December
2020
 January
 February
 March

Nonagricultural Wage and Salary Employment (thousands)					
Total	Mfg.	Trade, Transport., and Utilities	Professional and Business Services	Educational and Health Services	Government
51.6	7.7	10.5	3.8	11.5	7.0
51.7	7.9	10.3	4.0	11.5	6.8
52.2	7.9	10.3	4.4	11.4	6.5
52.3	8.3	10.1	4.8	11.2	6.1
52.0	8.5	9.8	4.8	11.1	6.1
52.3	8.8	9.8	4.9	11.0	6.1
52.9	8.9	9.9	4.7	11.8	6.1
53.3	9.0	9.8	4.5	12.1	6.1
53.0	9.2	9.8	4.6	11.9	6.0
52.9	9.2	9.7	5.0	11.6	6.0
2019					
52.3	9.1	9.5	4.9	11.7	6.1
52.7	9.1	9.5	4.9	11.7	6.2
53.1	9.1	9.5	5.1	11.8	6.1
53.6	9.1	9.7	5.1	11.8	6.2
53.3	9.2	9.6	5.1	11.7	5.9
53.1	9.2	9.7	5.1	11.5	5.7
53.3	9.4	9.7	5.2	11.4	5.8
52.8	9.3	9.5	5.1	11.4	6.1
52.7	9.2	9.6	5.1	11.5	6.0
53.0	9.3	10.1	5.1	11.5	6.0
52.6	9.2	10.2	5.0	11.5	6.0
2020					
51.8	9.2	9.9	4.8	11.4	6.0
51.8	9.2	9.6	4.9	11.4	6.1
51.6	9.1	9.8	4.8	11.5	6.0

Lima MSA

Nonagricultural Wage and Salary Employment^a

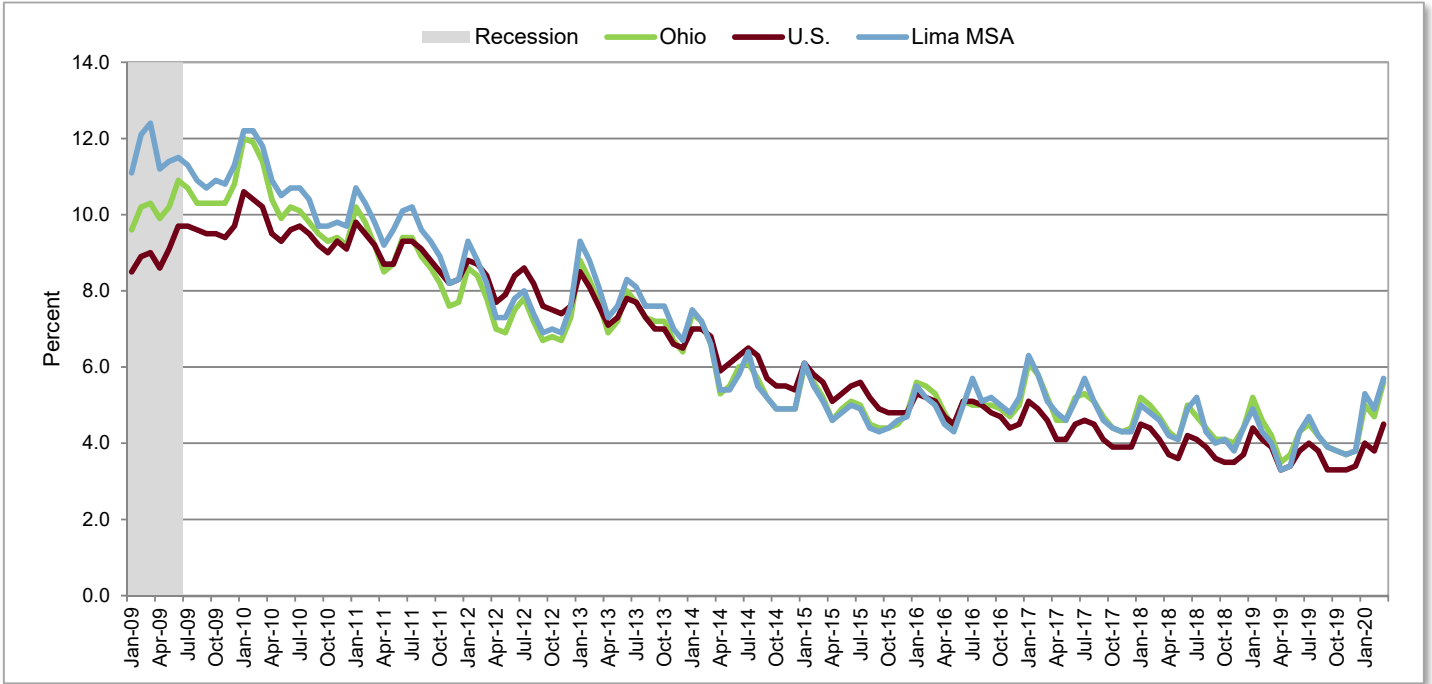
Not Seasonally Adjusted

	Employment (thousands)			Change (thousands)		Percent Change	
	Mar 2020 ^b	Feb 2020 ^c	Mar 2019 ^c	From Last Month	From Last Year	From Last Month	From Last Year
Total Nonagricultural	51.6	51.8	52.7	-0.2	-1.1	-0.4	-2.1
Total Private	45.6	45.7	46.5	-0.1	-0.9	-0.2	-1.9
Goods-Producing (Private)	11.1	11.1	11.2	0.0	-0.1	0.0	-0.9
Mining, Logging, and Construction	2.0	1.9	2.1	0.1	-0.1	5.3	-4.8
Manufacturing^d	9.1	9.2	9.1	-0.1	0.0	-1.1	0.0
Service-Providing (Private)	34.5	34.6	35.3	-0.1	-0.8	-0.3	-2.3
Trade, Transportation, and Utilities	9.8	9.6	9.5	0.2	0.3	2.1	3.2
Wholesale Trade	2.4	2.5	2.4	-0.1	0.0	-4.0	0.0
Retail Trade	5.7	5.6	5.6	0.1	0.1	1.8	1.8
Professional and Business Services	4.8	4.9	4.9	-0.1	-0.1	-2.0	-2.0
Administrative, Support, and Waste Services	2.6	3.0	3.1	-0.4	-0.5	-13.3	-16.1
Educational and Health Services	11.5	11.4	11.7	0.1	-0.2	0.9	-1.7
Leisure and Hospitality	4.6	4.7	4.8	-0.1	-0.2	-2.1	-4.2
Government	6.0	6.1	6.2	-0.1	-0.2	-1.6	-3.2
Federal Government	0.3	0.3	0.3	0.0	0.0	0.0	0.0
State Government	1.1	1.1	1.1	0.0	0.0	0.0	0.0
Local Government	4.6	4.7	4.8	-0.1	-0.2	-2.1	-4.2
Local Government Educational Services	2.8	2.9	3.0	-0.1	-0.2	-3.4	-6.7

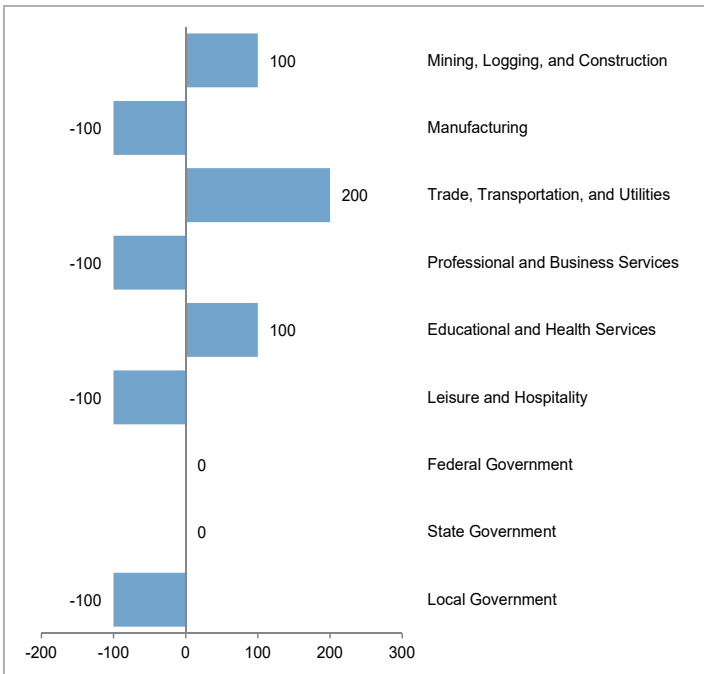
^aSee Technical Notes for concepts. ^bPreliminary. ^cRevised. ^dIncludes wood products; nonmetallic mineral products; primary metals; fabricated metal products; computer and electronic products; electrical equipment and appliance manufacturing; furniture and related products; miscellaneous manufacturing; food manufacturing; beverage and tobacco products; textile mills; textile product mills; apparel manufacturing; leather and allied products; paper manufacturing; printing and related support activities; petroleum and coal products; chemical manufacturing; plastics and rubber products.

Lima
Metropolitan Statistical Area
Not Seasonally Adjusted

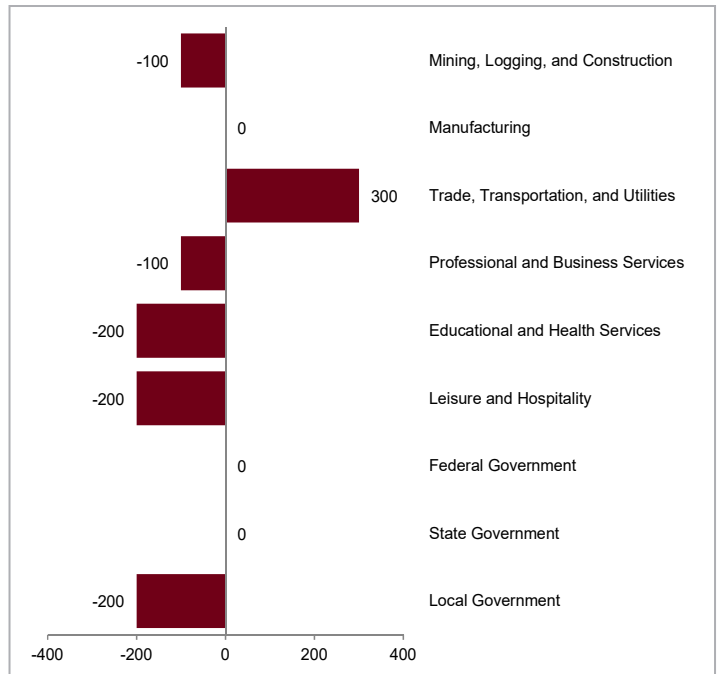
Unemployment Rates



Lima MSA
Over-the-Month Change



Lima MSA
Over-the-Year Change



Mansfield Metropolitan Statistical Area Not Seasonally Adjusted

Richland County

Over-the-Month Change: Nonfarm payroll employment in the Mansfield metropolitan area totaled 50,400 in March 2020, a decrease of 500 jobs from February. Employment in goods-producing industries, at 11,200, decreased 100 as losses in manufacturing (-200) outpaced gains in mining, logging, and construction (+100). Private service-providing employment, at 31,300, decreased 400 as losses in trade, transportation, and utilities (-200), leisure and hospitality (-200), and scattered industries (-100) exceeded gains in professional and business services (+100). Government employment, at 7,900, did not change over the month.



Over-the-Year Change: Nonagricultural wage and salary employment decreased 1,300 from March 2019 to March 2020. Goods-producing industries decreased 700 jobs with losses in manufacturing (-600) and mining, logging, and construction (-100). Employment in the private service-providing sector decreased 600 as losses in trade, transportation, and utilities (-300), professional and business services (-300), and scattered industries (-100) outweighed gains in leisure and hospitality (+100). Government employment did not change over the year as gains in federal government (+100) were offset by losses in local government (-100). State government employment did not change over the year.

Civilian Labor Force (thousands)			Unemployment Rate
Total	Employed	Unemployed	
59.1	51.9	7.2	12.1%
58.1	52.0	6.2	10.6%
55.9	51.0	4.9	8.7%
54.9	50.2	4.7	8.6%
54.5	50.9	3.6	6.6%
53.5	50.5	3.0	5.6%
53.4	50.4	3.0	5.6%
53.2	50.3	2.9	5.5%
52.8	50.2	2.6	4.9%
52.2	49.9	2.4	4.5%
52.3	49.7	2.6	4.9%
52.2	49.8	2.4	4.7%
51.7	49.7	2.0	3.8%
52.4	50.4	2.0	3.8%
53.0	50.6	2.4	4.5%
53.0	50.3	2.6	5.0%
52.3	49.9	2.4	4.5%
52.0	49.8	2.2	4.2%
51.8	49.6	2.2	4.2%
52.0	49.8	2.3	4.3%
52.0	49.6	2.4	4.6%
51.7	48.7	3.0	5.8%
52.5	49.8	2.7	5.2%
51.5	48.4	3.1	6.0%

	Nonagricultural Wage and Salary Employment (thousands)					
	Total	Mfg.	Trade, Transport., and Utilities	Professional and Business Services	Educational and Health Services	Government
2010	52.1	8.7	10.0	5.3	8.5	8.2
2011	52.8	8.9	10.1	6.1	8.3	8.0
2012	52.3	9.3	10.0	5.3	8.1	7.9
2013	52.1	9.4	10.0	5.2	8.1	7.7
2014	52.8	9.5	10.2	5.4	8.0	7.9
2015	52.5	9.7	10.1	5.3	8.1	7.7
2016	52.7	9.7	10.0	5.5	8.1	7.7
2017	52.5	9.9	10.0	5.1	8.1	7.6
2018	52.7	10.1	10.2	4.9	8.3	7.7
2019	52.0	9.8	10.0	4.8	8.0	7.7
2019						
February	51.5	9.9	9.8	4.7	8.0	7.7
March	51.7	9.9	10.0	4.7	8.0	7.9
April	52.2	9.9	10.0	4.9	8.0	7.9
May	52.7	9.9	10.1	5.1	8.0	7.9
June	52.5	9.9	10.0	5.3	7.9	7.5
July	51.9	9.9	9.9	4.9	7.9	7.1
August	51.9	9.9	9.9	4.9	8.0	7.2
September	51.9	9.9	9.8	4.7	8.0	7.7
October	51.5	9.4	9.9	4.6	8.0	7.8
November	51.9	9.6	10.2	4.6	8.0	7.9
December	52.0	9.6	10.3	4.4	8.0	8.0
2020						
January	50.2	9.4	10.0	4.3	7.9	7.3
February	50.9	9.5	9.9	4.3	8.0	7.9
March	50.4	9.3	9.7	4.4	8.0	7.9

Mansfield MSA

Nonagricultural Wage and Salary Employment^a

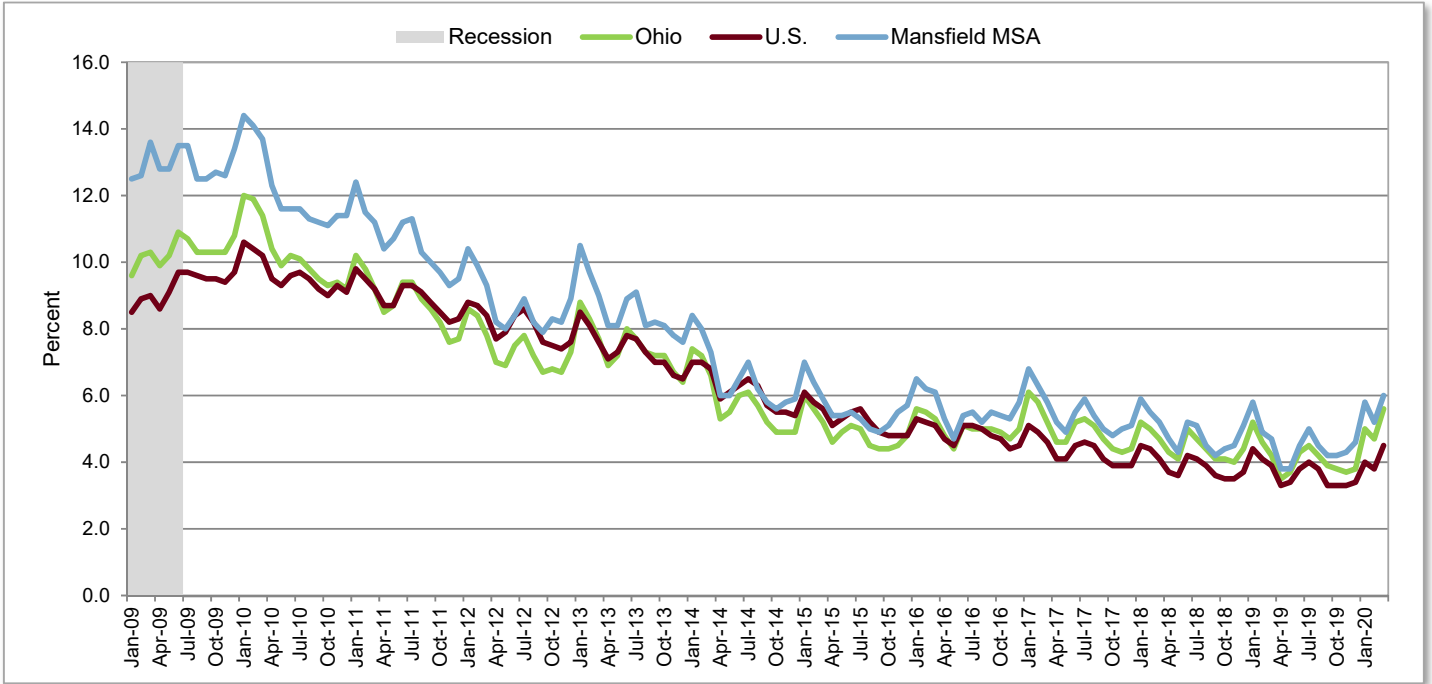
Not Seasonally Adjusted

	Employment (thousands)			Change (thousands)		Percent Change	
	Mar 2020 ^b	Feb 2020 ^c	Mar 2019 ^c	From Last Month	From Last Year	From Last Month	From Last Year
Total Nonagricultural	50.4	50.9	51.7	-0.5	-1.3	-1.0	-2.5
Total Private	42.5	43.0	43.8	-0.5	-1.3	-1.2	-3.0
Goods-Producing (Private)	11.2	11.3	11.9	-0.1	-0.7	-0.9	-5.9
Mining, Logging, and Construction	1.9	1.8	2.0	0.1	-0.1	5.6	-5.0
Manufacturing^d	9.3	9.5	9.9	-0.2	-0.6	-2.1	-6.1
Service-Providing (Private)	31.3	31.7	31.9	-0.4	-0.6	-1.3	-1.9
Trade, Transportation, and Utilities	9.7	9.9	10.0	-0.2	-0.3	-2.0	-3.0
Retail Trade	6.3	6.5	6.5	-0.2	-0.2	-3.1	-3.1
Financial Activities	1.3	1.3	1.3	0.0	0.0	0.0	0.0
Professional and Business Services	4.4	4.3	4.7	0.1	-0.3	2.3	-6.4
Educational and Health Services	8.0	8.0	8.0	0.0	0.0	0.0	0.0
Leisure and Hospitality	5.3	5.5	5.2	-0.2	0.1	-3.6	1.9
Other Services	2.2	2.2	2.2	0.0	0.0	0.0	0.0
Government	7.9	7.9	7.9	0.0	0.0	0.0	0.0
Federal Government	0.7	0.7	0.6	0.0	0.1	0.0	16.7
State Government	1.6	1.6	1.6	0.0	0.0	0.0	0.0
Local Government	5.6	5.6	5.7	0.0	-0.1	0.0	-1.8
Local Government Educational Services	3.5	3.5	3.5	0.0	0.0	0.0	0.0

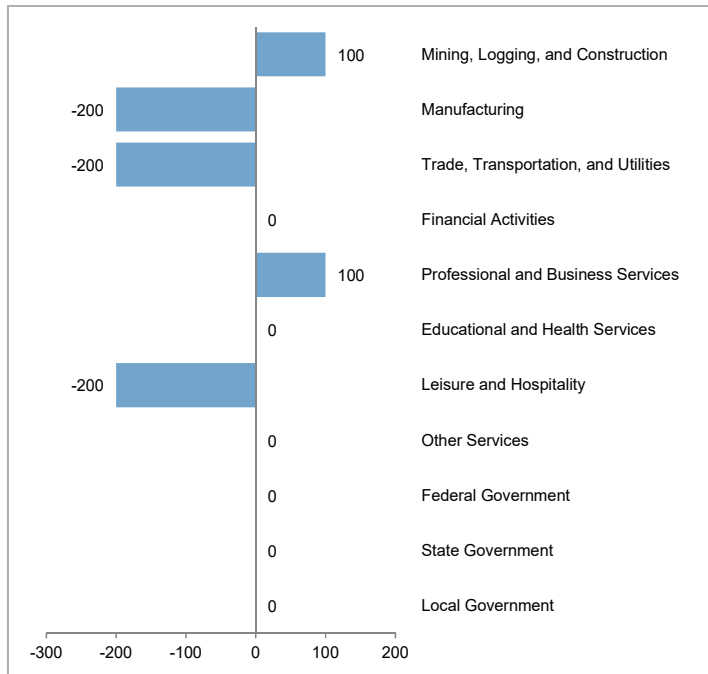
^aSee Technical Notes for concepts. ^bPreliminary. ^cRevised. ^dIncludes wood products; nonmetallic mineral products; primary metals; fabricated metal products; computer and electronic products; electrical equipment and appliance manufacturing; furniture and related products; miscellaneous manufacturing; food manufacturing; beverage and tobacco products; textile mills; textile product mills; apparel manufacturing; leather and allied products; paper manufacturing; printing and related support activities; petroleum and coal products; chemical manufacturing; plastics and rubber products.

**Mansfield
Metropolitan Statistical Area
Not Seasonally Adjusted**

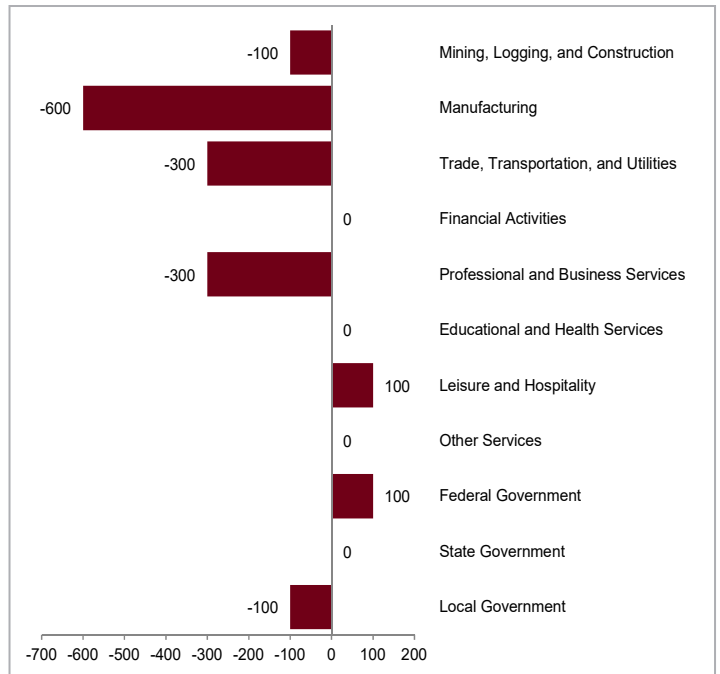
Unemployment Rates



**Mansfield MSA
Over-the-Month Change**



**Mansfield MSA
Over-the-Year Change**



Springfield Metropolitan Statistical Area Not Seasonally Adjusted

Clark County

Over-the-Month Change: Nonfarm payroll employment in the Springfield metropolitan area totaled 48,900 in March 2020, unchanged from February. Goods-producing industries, at 8,200, decreased 100 in manufacturing. Employment in private service-providing industries, at 33,700, increased 100 as gains in financial activities (+100) and professional and business services (+100) exceeded losses in trade, transportation, and utilities (-100). Government employment, at 7,000, did not change over the month.



Over-the-Year Change: Nonagricultural wage and salary employment decreased 600 from March 2019 to March 2020. Goods-producing industries lost 200 jobs in mining, logging, and construction (-100) and manufacturing (-100). The private service-providing sector lost 300 jobs in financial activities (-100), professional and business services (-100), and educational and health services (-100). Government employment decreased 100 as losses in local government (-200) surpassed gains in federal government (+100). State government employment did not change over the year.

Civilian Labor Force (thousands)			Unemployment Rate
Total	Employed	Unemployed	
68.3	60.7	7.5	11.0%
67.5	61.1	6.4	9.5%
65.8	60.7	5.1	7.8%
65.9	61.0	5.0	7.5%
65.0	61.2	3.8	5.8%
64.0	60.8	3.2	5.0%
63.6	60.2	3.4	5.3%
63.6	60.5	3.1	4.9%
63.1	60.2	2.9	4.6%
63.3	60.5	2.7	4.3%
63.3	60.4	2.9	4.5%
63.1	60.5	2.7	4.2%
62.9	60.7	2.2	3.5%
63.2	61.0	2.2	3.5%
63.5	60.7	2.8	4.4%
63.6	60.4	3.2	5.0%
63.5	60.8	2.7	4.3%
62.7	60.2	2.5	4.0%
64.0	60.9	3.1	4.8%
63.3	60.6	2.7	4.2%
63.0	60.5	2.6	4.1%
63.5	59.9	3.6	5.7%
63.8	60.7	3.2	5.0%
63.2	59.7	3.6	5.6%

Nonagricultural Wage and Salary Employment (thousands)						
Total	Mfg.	Trade, Transport., and Utilities	Professional and Business Services	Educational and Health Services	Government	
2010	49.8	6.4	9.8	4.0	9.7	7.2
2011	50.6	6.6	10.0	4.1	9.6	7.2
2012	50.8	6.6	10.1	4.0	9.2	7.3
2013	51.9	6.7	10.2	4.3	8.8	7.3
2014	51.5	6.7	10.0	4.6	8.9	7.2
2015	50.8	6.9	9.9	4.8	8.9	7.2
2016	50.0	6.7	9.9	4.7	8.8	7.2
2017	50.3	6.9	9.8	4.7	8.9	7.2
2018	49.9	7.0	9.6	4.8	8.9	7.2
2019	49.7	7.2	9.5	5.2	8.8	7.1
2019						
February	49.8	7.3	9.6	5.1	8.9	7.1
March	49.5	7.3	9.4	5.1	8.8	7.1
April	50.3	7.2	9.5	5.3	8.8	7.3
May	50.5	7.2	9.5	5.4	8.8	7.4
June	49.9	7.2	9.4	5.2	8.5	7.2
July	49.0	6.8	9.4	5.2	8.6	6.6
August	49.7	7.2	9.6	5.2	8.7	6.7
September	49.2	7.2	9.3	5.1	8.7	6.9
October	49.8	7.2	9.4	5.2	8.8	7.2
November	49.8	7.2	9.7	5.0	8.8	7.3
December	49.5	7.3	9.7	5.0	8.8	7.0
2020						
January	48.7	7.2	9.5	5.0	8.6	7.0
February	48.9	7.3	9.5	4.9	8.7	7.0
March	48.9	7.2	9.4	5.0	8.7	7.0

Springfield MSA

Nonagricultural Wage and Salary Employment^a

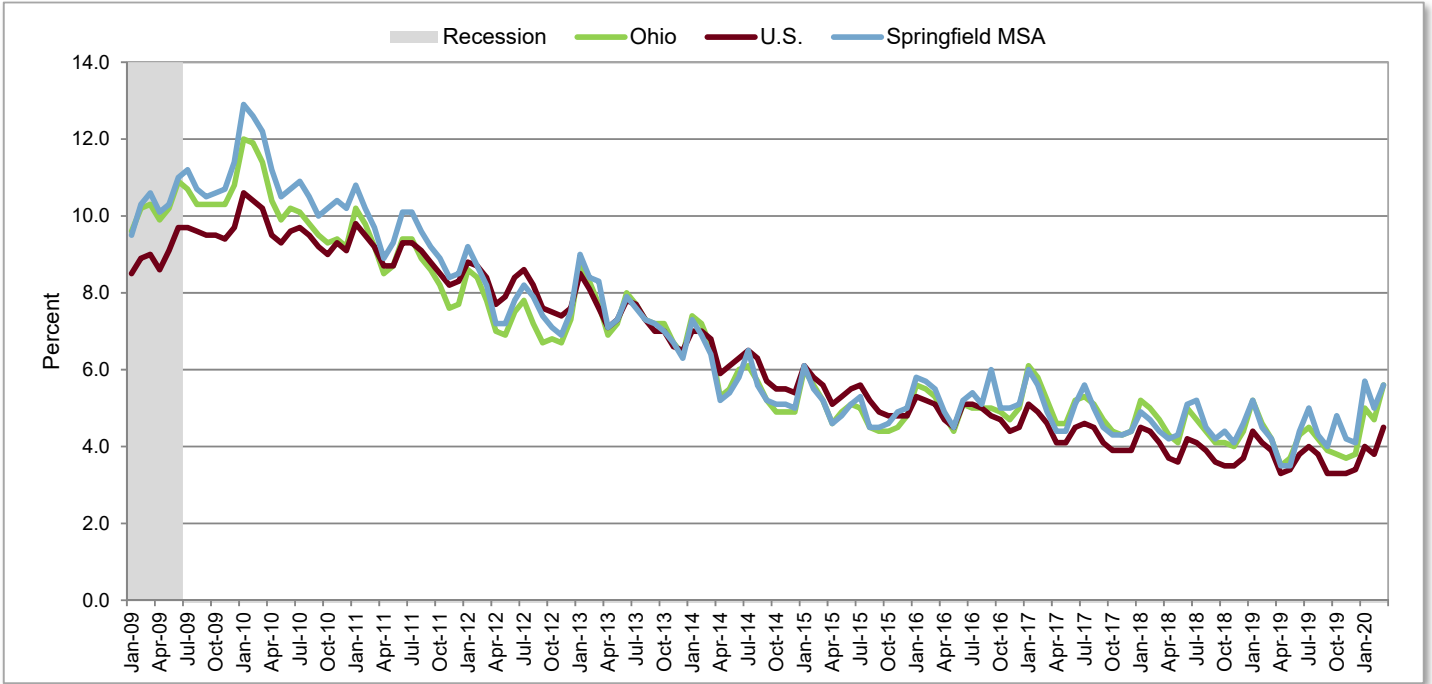
Not Seasonally Adjusted

	Employment (thousands)			Change (thousands)		Percent Change	
	Mar 2020 ^b	Feb 2020 ^c	Mar 2019 ^c	From Last Month	From Last Year	From Last Month	From Last Year
Total Nonagricultural	48.9	48.9	49.5	0.0	-0.6	0.0	-1.2
Total Private	41.9	41.9	42.4	0.0	-0.5	0.0	-1.2
Goods-Producing (Private)	8.2	8.3	8.4	-0.1	-0.2	-1.2	-2.4
Mining, Logging, and Construction	1.0	1.0	1.1	0.0	-0.1	0.0	-9.1
Manufacturing^d	7.2	7.3	7.3	-0.1	-0.1	-1.4	-1.4
Service-Providing (Private)	33.7	33.6	34.0	0.1	-0.3	0.3	-0.9
Trade, Transportation, and Utilities	9.4	9.5	9.4	-0.1	0.0	-1.1	0.0
Wholesale Trade	1.8	1.8	1.8	0.0	0.0	0.0	0.0
Retail Trade	5.0	5.1	5.2	-0.1	-0.2	-2.0	-3.8
Transportation, Warehousing, and Utilities	2.6	2.6	2.4	0.0	0.2	0.0	8.3
Financial Activities	3.5	3.4	3.6	0.1	-0.1	2.9	-2.8
Professional and Business Services	5.0	4.9	5.1	0.1	-0.1	2.0	-2.0
Educational and Health Services	8.7	8.7	8.8	0.0	-0.1	0.0	-1.1
Leisure and Hospitality	5.0	5.0	5.0	0.0	0.0	0.0	0.0
Other Services	2.0	2.0	2.0	0.0	0.0	0.0	0.0
Government	7.0	7.0	7.1	0.0	-0.1	0.0	-1.4
Federal Government	0.6	0.6	0.5	0.0	0.1	0.0	20.0
State Government	0.1	0.1	0.1	0.0	0.0	0.0	0.0
Local Government	6.3	6.3	6.5	0.0	-0.2	0.0	-3.1
Local Government Educational Services	4.1	4.1	4.3	0.0	-0.2	0.0	-4.7

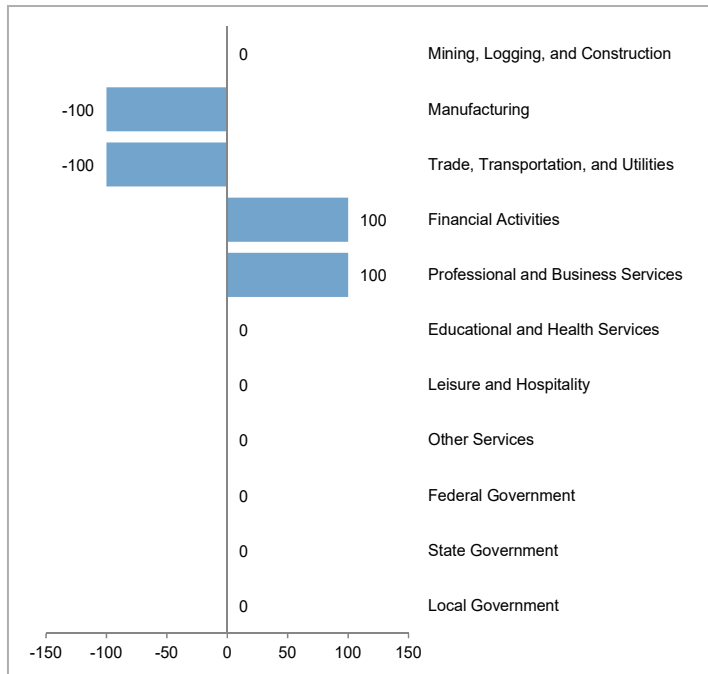
^aSee Technical Notes for concepts. ^bPreliminary. ^cRevised. ^dIncludes wood products; nonmetallic mineral products; primary metals; fabricated metal products; computer and electronic products; electrical equipment and appliance manufacturing; furniture and related products; miscellaneous manufacturing; food manufacturing; beverage and tobacco products; textile mills; textile product mills; apparel manufacturing; leather and allied products; paper manufacturing; printing and related support activities; petroleum and coal products; chemical manufacturing; plastics and rubber products.

**Springfield
Metropolitan Statistical Area
Not Seasonally Adjusted**

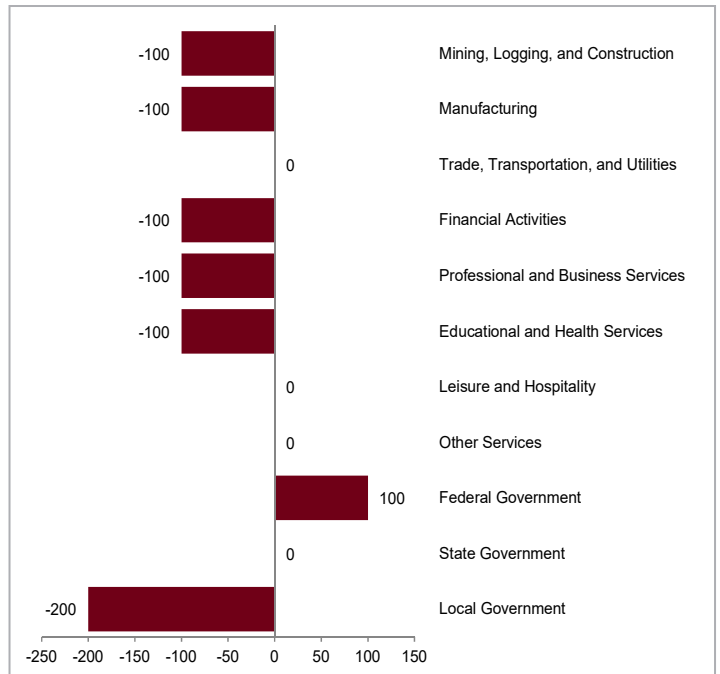
Unemployment Rates



**Springfield MSA
Over-the-Month Change**



**Springfield MSA
Over-the-Year Change**



Toledo Metropolitan Statistical Area Not Seasonally Adjusted

Fulton, Lucas, and Wood Counties

Over-the-Month Change: Nonfarm payroll employment in the Toledo metropolitan area totaled 304,400 in March 2020, a decrease of 1,600 jobs from February. Employment in goods-producing industries, at 62,400, did not change over the month as gains in mining, logging, and construction (+300) were offset by losses in manufacturing (-300). Private service-providing employment, at 195,700, decreased 1,600 as losses in leisure and hospitality (-1,700) and trade, transportation, and utilities (-1,200) exceeded gains in educational and health services (+1,000) and professional and business services (+300). Government employment, at 46,300, did not change over the month as gains in state government (+100) were offset by losses in local government (-100). Federal government employment did not change over the month.



Over-the-Year Change: Nonagricultural wage and salary employment decreased 3,900 from March 2019 to March 2020. Goods-producing industries added 2,400 jobs in manufacturing (+1,800) and mining, logging, and construction (+600). The private service-providing sector lost 6,200 jobs as losses in leisure and hospitality (-4,200), trade, transportation, and utilities (-1,200), professional and business services (-900), and other services (-100) outpaced gains in educational and health services (+200). Government employment decreased 100 as losses in local government (-200) outweighed gains in federal government (+100). State government employment did not change over the year.

Civilian Labor Force (thousands)			Unemployment Rate
Total	Employed	Unemployed	
309.1	274.5	34.6	11.2%
304.4	275.4	29.0	9.5%
301.5	277.5	24.0	8.0%
302.3	277.4	24.9	8.2%
300.3	281.9	18.4	6.1%
300.4	285.2	15.2	5.1%
303.6	288.6	15.0	4.9%
303.3	286.6	16.7	5.5%
302.7	288.0	14.8	4.9%
303.8	290.5	13.3	4.4%
302.5	288.1	14.4	4.8%
302.6	289.1	13.5	4.5%
302.3	291.1	11.2	3.7%
307.2	292.2	15.0	4.9%
304.7	291.3	13.4	4.4%
304.8	290.7	14.1	4.6%
303.4	290.1	13.3	4.4%
303.2	291.0	12.2	4.0%
307.5	295.3	12.2	4.0%
304.8	293.1	11.8	3.9%
302.3	290.4	11.9	3.9%
301.7	285.5	16.2	5.4%
305.0	290.4	14.6	4.8%
300.0	283.7	16.4	5.4%

Nonagricultural Wage and Salary Employment (thousands)						
Total	Mfg.	Trade, Transport., and Utilities	Professional and Business Services	Educational and Health Services	Government	
2010	282.0	35.5	54.0	31.4	50.4	46.1
2011	285.9	37.1	54.8	32.6	50.2	45.1
2012	291.8	38.7	55.2	32.9	50.6	45.4
2013	295.2	40.0	55.5	34.4	51.2	45.3
2014	299.4	42.2	56.5	36.2	50.2	45.3
2015	304.8	43.8	58.1	37.0	50.0	45.7
2016	310.2	44.6	59.2	37.4	50.6	45.7
2017	307.8	43.0	58.5	36.9	51.0	45.2
2018	310.1	45.2	57.6	37.1	51.1	45.1
2019	310.9	46.8	56.7	36.6	50.7	45.2
2019						
February	307.8	45.7	56.3	36.7	51.1	46.2
March	308.3	45.9	56.2	36.0	50.9	46.4
April	313.2	46.6	56.3	37.6	51.0	46.6
May	314.6	46.8	56.5	37.6	50.8	45.3
June	311.9	47.3	56.5	35.9	50.6	42.9
July	309.0	47.4	56.5	36.2	50.2	42.3
August	309.4	47.5	56.2	36.2	50.5	42.3
September	311.9	47.2	55.9	36.4	50.5	46.1
October	313.8	46.5	56.7	36.6	50.7	47.3
November	314.5	47.6	57.8	37.3	50.5	46.8
December	311.9	48.0	58.1	36.4	50.4	45.6
2020						
January	303.4	47.8	56.6	34.7	50.1	43.6
February	306.0	48.0	56.2	34.8	50.1	46.3
March	304.4	47.7	55.0	35.1	51.1	46.3

Toledo MSA

Nonagricultural Wage and Salary Employment^a

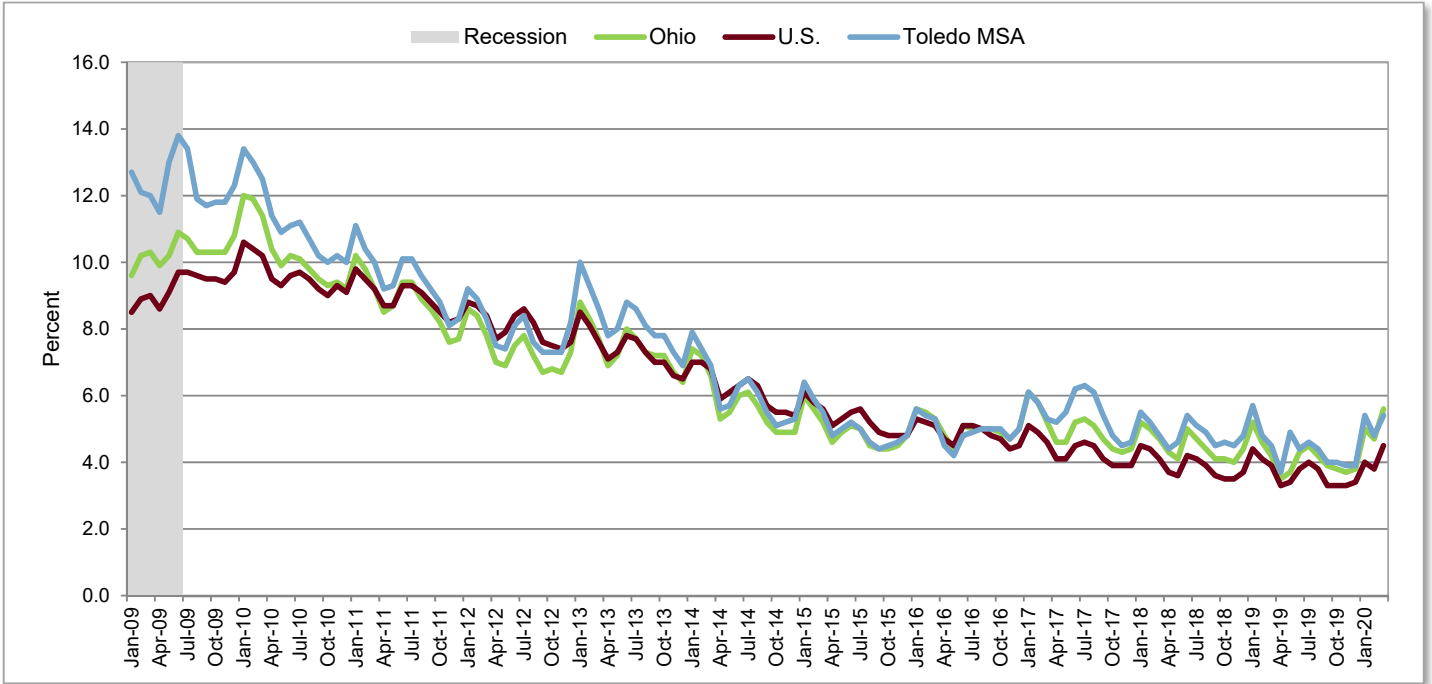
Not Seasonally Adjusted

	Employment (thousands)			Change (thousands)		Percent Change	
	Mar 2020 ^b	Feb 2020 ^c	Mar 2019 ^c	From Last Month	From Last Year	From Last Month	From Last Year
Total Nonagricultural	304.4	306.0	308.3	-1.6	-3.9	-0.5	-1.3
Total Private	258.1	259.7	261.9	-1.6	-3.8	-0.6	-1.5
Goods-Producing (Private)	62.4	62.4	60.0	0.0	2.4	0.0	4.0
Mining, Logging, and Construction	14.7	14.4	14.1	0.3	0.6	2.1	4.3
Manufacturing	47.7	48.0	45.9	-0.3	1.8	-0.6	3.9
Durable Goods ^d	37.0	37.3	35.4	-0.3	1.6	-0.8	4.5
Transportation Equipment	18.8	18.9	16.9	-0.1	1.9	-0.5	11.2
Service-Providing (Private)	195.7	197.3	201.9	-1.6	-6.2	-0.8	-3.1
Trade, Transportation, and Utilities	55.0	56.2	56.2	-1.2	-1.2	-2.1	-2.1
Wholesale Trade	11.9	12.0	12.2	-0.1	-0.3	-0.8	-2.5
Retail Trade	29.2	30.1	30.4	-0.9	-1.2	-3.0	-3.9
General Merchandise Stores	6.5	6.5	6.7	0.0	-0.2	0.0	-3.0
Transportation, Warehousing, and Utilities	13.9	14.1	13.6	-0.2	0.3	-1.4	2.2
Transportation and Warehousing	13.2	13.4	12.9	-0.2	0.3	-1.5	2.3
Information	3.1	3.1	3.1	0.0	0.0	0.0	0.0
Financial Activities	11.2	11.2	11.2	0.0	0.0	0.0	0.0
Professional and Business Services	35.1	34.8	36.0	0.3	-0.9	0.9	-2.5
Professional, Scientific, and Technical Services	10.9	10.8	11.0	0.1	-0.1	0.9	-0.9
Administrative, Support and Waste Services	17.5	17.6	17.9	-0.1	-0.4	-0.6	-2.2
Educational and Health Services	51.1	50.1	50.9	1.0	0.2	2.0	0.4
Health Care and Social Assistance	47.0	46.1	46.6	0.9	0.4	2.0	0.9
Hospitals	14.0	13.9	14.2	0.1	-0.2	0.7	-1.4
Leisure and Hospitality	28.4	30.1	32.6	-1.7	-4.2	-5.6	-12.9
Accommodation and Food Services	25.4	26.9	28.1	-1.5	-2.7	-5.6	-9.6
Other Services	11.8	11.8	11.9	0.0	-0.1	0.0	-0.8
Government	46.3	46.3	46.4	0.0	-0.1	0.0	-0.2
Federal Government	2.2	2.2	2.1	0.0	0.1	0.0	4.8
State Government	16.2	16.1	16.2	0.1	0.0	0.6	0.0
State Government Educational ^e Services	12.0	11.8	11.8	0.2	0.2	1.7	1.7
Local Government	27.9	28.0	28.1	-0.1	-0.2	-0.4	-0.7
Local Government Educational Services	16.4	16.4	16.5	0.0	-0.1	0.0	-0.6

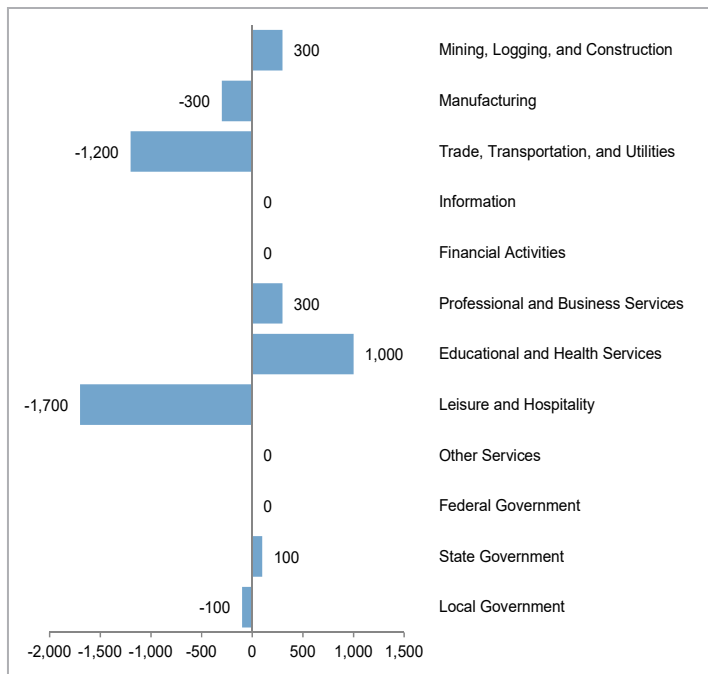
^aSee Technical Notes for concepts. ^bPreliminary. ^cRevised. ^dIncludes wood products; nonmetallic mineral products; primary metals; fabricated metal products; machinery manufacturing; computer and electronic products; electrical equipment and appliance manufacturing; furniture and related products; miscellaneous manufacturing. ^eIncludes state universities. Excludes the agricultural extension service.

**Toledo
Metropolitan Statistical Area
Not Seasonally Adjusted**

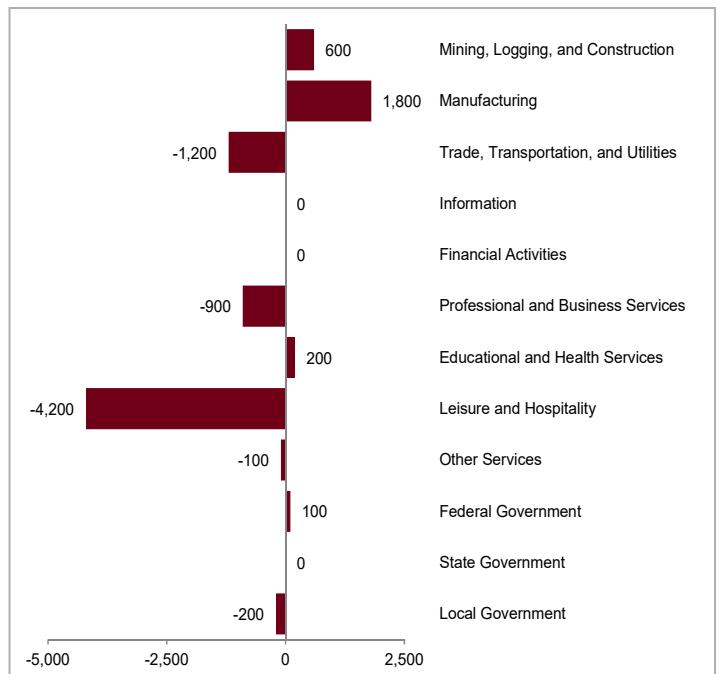
Unemployment Rates



**Toledo MSA
Over-the-Month Change**



**Toledo MSA
Over-the-Year Change**



Weirton-Steubenville Metropolitan Statistical Area Not Seasonally Adjusted

In Ohio: Jefferson County

In West Virginia: Brooke and Hancock Counties



Over-the-Month Change: Nonfarm payroll employment in the Weirton-Steubenville metropolitan area totaled 39,200 in March 2020, a decrease of 100 jobs from February. Goods-producing industries, at 6,900, decreased 100 in manufacturing. Private service-providing industries, at 25,900, increased 100 as gains in trade, transportation, and utilities (+200) surpassed losses in scattered industries (-100). Government employment, at 6,400, decreased 100 jobs over the month.

Over-the-Year Change: Nonagricultural wage and salary employment decreased 1,100 from March 2019 to March 2020. Goods-producing industries decreased 300 in manufacturing. Private service-providing employment decreased 900 as losses in scattered industries (-600), trade, transportation, and utilities (-300), and professional and business services (-100) exceeded gains in educational and health services (+100). Government employment added 100 jobs over the year in local government.

Civilian Labor Force (thousands)			Unemployment Rate
Total	Employed	Unemployed	
58.4	50.6	7.8	13.3%
56.6	50.2	6.4	11.2%
55.7	50.1	5.6	10.1%
54.4	49.1	5.2	9.6%
53.0	48.8	4.2	8.0%
52.4	48.5	3.9	7.5%
51.7	47.7	4.0	7.8%
50.4	46.9	3.4	6.8%
50.4	47.3	3.1	6.1%
50.8	48.0	2.8	5.6%
50.6	47.4	3.2	6.3%
50.3	47.4	2.9	5.7%
50.4	48.0	2.4	4.8%
50.4	48.0	2.4	4.8%
51.3	48.5	2.9	5.6%
51.7	48.7	3.0	5.7%
51.5	48.7	2.8	5.5%
51.2	48.5	2.7	5.4%
51.3	48.5	2.8	5.5%
50.8	48.1	2.7	5.4%
50.6	47.9	2.7	5.4%
50.4	47.0	3.4	6.7%
50.8	47.6	3.2	6.4%
50.6	47.1	3.5	7.0%

Nonagricultural Wage and Salary Employment (thousands)						
Total	Mfg.	Trade, Transport., and Utilities	Professional and Business Services	Educational and Health Services	Government	
2010	44.1	6.4	8.8	1.9	9.2	6.4
2011	43.9	6.4	8.7	1.9	9.3	6.2
2012	43.7	6.2	8.6	1.9	9.2	6.1
2013	42.9	5.6	8.6	1.9	9.2	6.0
2014	42.6	5.5	8.7	1.9	9.1	5.9
2015	42.3	5.5	8.9	1.9	8.9	6.0
2016	40.9	5.4	8.8	1.8	9.0	6.0
2017	40.1	5.2	8.4	2.0	9.0	6.1
2018	40.4	5.3	8.4	2.1	9.0	6.3
2019	40.5	5.5	8.3	2.2	8.8	6.4
2019						
February	40.2	5.7	8.3	2.2	8.9	6.3
March	40.3	5.6	8.4	2.2	8.9	6.3
April	40.9	5.5	8.3	2.4	8.8	6.5
May	40.7	5.5	8.4	2.3	8.7	6.4
June	40.7	5.6	8.4	2.2	8.6	6.4
July	40.6	5.5	8.3	2.2	8.6	6.3
August	41.0	5.5	8.3	2.2	8.6	6.6
September	40.8	5.4	8.1	2.2	8.9	6.5
October	40.7	5.4	8.2	2.2	8.9	6.5
November	40.4	5.4	8.4	2.2	8.9	6.5
December	40.3	5.4	8.4	2.2	8.9	6.5
2020						
January	38.9	5.4	7.9	2.1	8.8	6.3
February	39.3	5.4	7.9	2.1	9.0	6.5
March	39.2	5.3	8.1	2.1	9.0	6.4

Weirton-Steubenville MSA

Nonagricultural Wage and Salary Employment^a

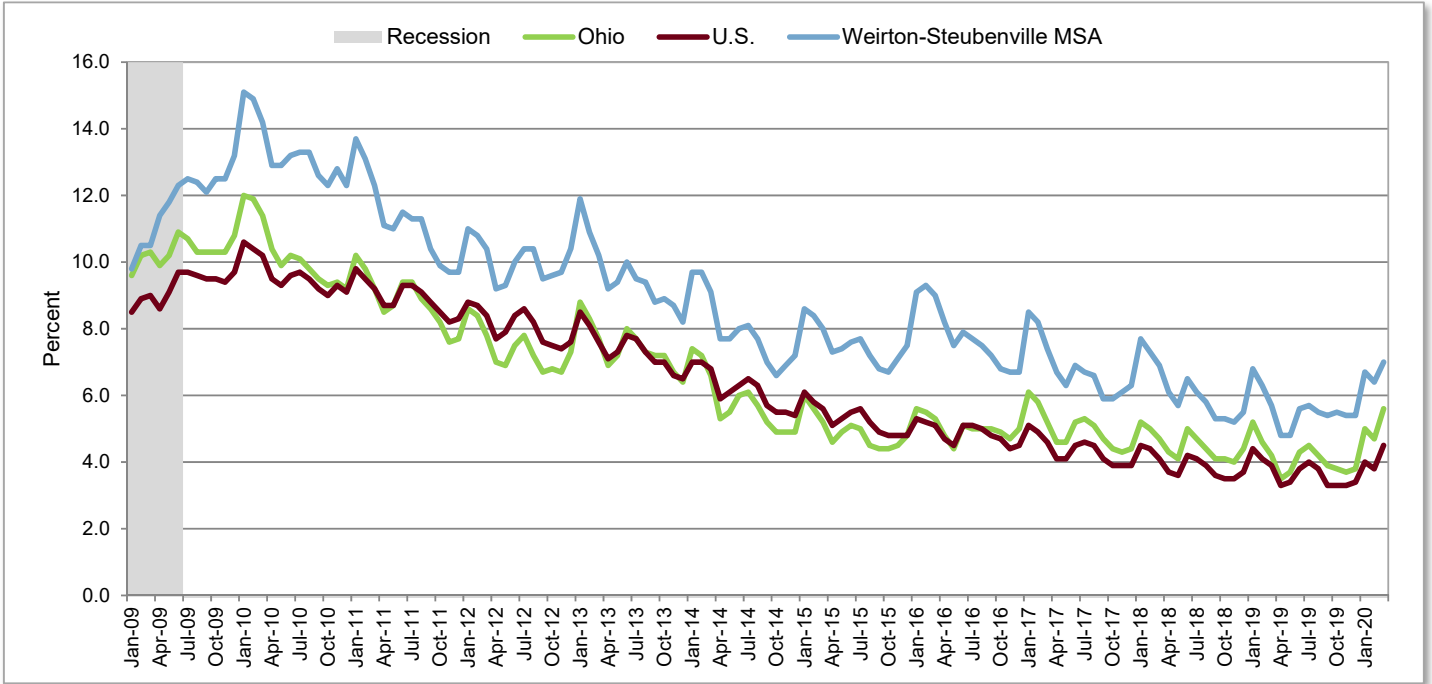
Not Seasonally Adjusted

	Employment (thousands)			Change (thousands)		Percent Change	
	Mar 2020 ^b	Feb 2020 ^c	Mar 2019 ^c	From Last Month	From Last Year	From Last Month	From Last Year
Total Nonagricultural	39.2	39.3	40.3	-0.1	-1.1	-0.3	-2.7
Total Private	32.8	32.8	34.0	0.0	-1.2	0.0	-3.5
Goods-Producing (Private)	6.9	7.0	7.2	-0.1	-0.3	-1.4	-4.2
Mining, Logging, and Construction	1.6	1.6	1.6	0.0	0.0	0.0	0.0
Manufacturing^d	5.3	5.4	5.6	-0.1	-0.3	-1.9	-5.4
Service-Providing (Private)	25.9	25.8	26.8	0.1	-0.9	0.4	-3.4
Trade, Transportation, and Utilities	8.1	7.9	8.4	0.2	-0.3	2.5	-3.6
Retail Trade	4.4	4.4	4.4	0.0	0.0	0.0	0.0
Transportation, Warehousing, and Utilities	2.7	2.7	3.0	0.0	-0.3	0.0	-10.0
Professional and Business Services	2.1	2.1	2.2	0.0	-0.1	0.0	-4.5
Educational and Health Services	9.0	9.0	8.9	0.0	0.1	0.0	1.1
Leisure and Hospitality	4.3	4.3	4.3	0.0	0.0	0.0	0.0
Government	6.4	6.5	6.3	-0.1	0.1	-1.5	1.6
Local Government	5.8	5.8	5.7	0.0	0.1	0.0	1.8
Local Government Educational Services	3.2	3.3	3.2	-0.1	0.0	-3.0	0.0

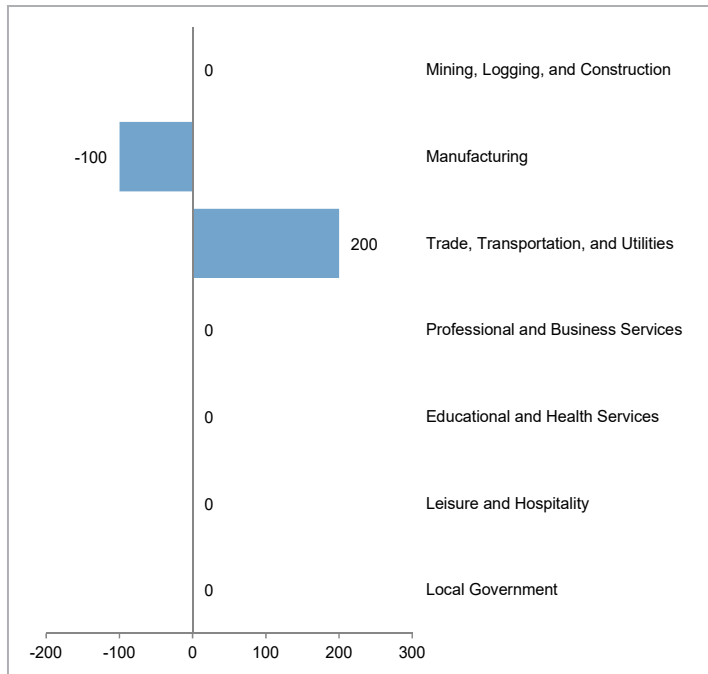
^aSee Technical Notes for concepts. ^bPreliminary. ^cRevised. ^dIncludes wood products; nonmetallic mineral products; primary metals; fabricated metal products; computer and electronic products; electrical equipment and appliance manufacturing; furniture and related products; miscellaneous manufacturing; food manufacturing; beverage and tobacco products; textile mills; textile product mills; apparel manufacturing; leather and allied products; paper manufacturing; printing and related support activities; petroleum and coal products; chemical manufacturing; plastics and rubber products.

**Weirton-Steubenville
Metropolitan Statistical Area
Not Seasonally Adjusted**

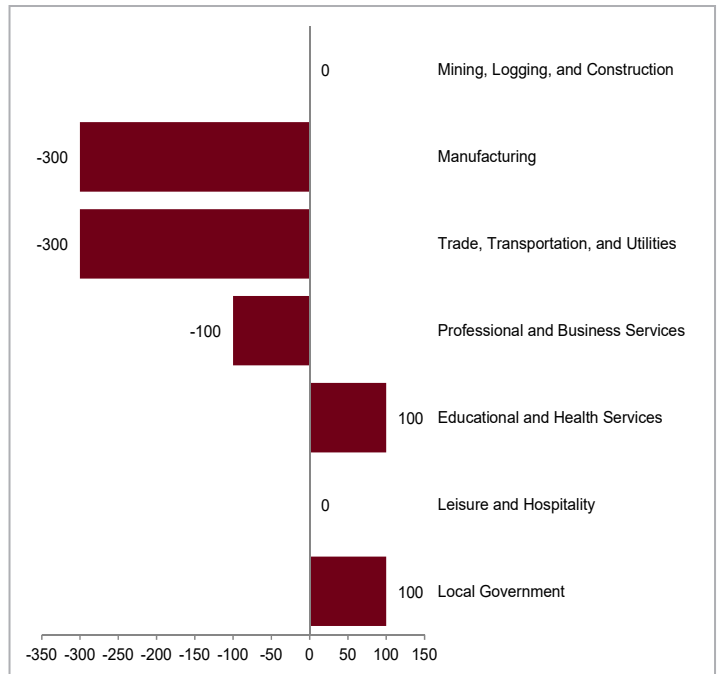
Unemployment Rates



**Weirton-Steubenville MSA
Over-the-Month Change**



**Weirton-Steubenville MSA
Over-the-Year Change**



Youngstown-Warren-Boardman Metropolitan Statistical Area Not Seasonally Adjusted

In Ohio: Trumbull and Mahoning Counties
In Pennsylvania: Mercer County



Over-the-Month Change: Nonfarm payroll employment in the Youngstown-Warren-Boardman metropolitan area totaled 209,900 in March 2020, a decrease of 800 jobs from February. Employment in goods-producing industries, at 33,200, decreased 200 as losses in manufacturing (-300) exceeded gains in mining, logging, and construction (+100).

The private service-providing sector, at 147,800, lost 700 jobs as losses in educational and health services (-500) and trade, transportation, and utilities (-300) surpassed gains in other services (+100). Government employment, at 28,900, increased 100 in local government. Federal and state government employment did not change over the month.

Over-the-Year Change: Nonagricultural wage and salary employment decreased 5,400 from March 2019 to March 2020. Goods-producing industries decreased 1,500 with losses in manufacturing (-1,100) and mining, logging, and construction (-400). Private service-providing employment decreased 2,600 with losses in educational and health services (-1,400), leisure and hospitality (-600), professional and business services (-300), trade, transportation, and utilities (-200), and information (-100). Government employment decreased 1,300 with losses in local (-900) and state (-400) government. Federal government employment did not change over the year.

Civilian Labor Force (thousands)			Unemployment Rate
Total	Employed	Unemployed	
268.6	236.8	31.8	11.8%
263.7	238.0	25.7	9.7%
260.0	238.1	21.9	8.4%
257.8	235.8	22.1	8.6%
253.5	236.4	17.1	6.7%
251.1	235.7	15.3	6.1%
248.8	232.8	16.1	6.5%
244.8	228.4	16.4	6.7%
241.7	227.8	13.9	5.7%
239.2	225.5	13.6	5.7%
2019			
239.1	224.9	14.2	5.9%
239.5	224.9	14.7	6.1%
237.3	225.1	12.2	5.2%
238.9	226.6	12.3	5.2%
241.6	227.5	14.1	5.8%
242.3	227.5	14.9	6.1%
240.8	226.4	14.4	6.0%
238.6	226.1	12.6	5.3%
238.7	226.2	12.6	5.3%
237.5	224.7	12.8	5.4%
236.4	223.7	12.7	5.4%
2020			
236.1	219.7	16.4	6.9%
238.0	222.8	15.2	6.4%
234.8	217.9	16.9	7.2%

Nonagricultural Wage and Salary Employment (thousands)					
Total	Mfg.	Trade, Transport., and Utilities	Professional and Business Services	Educational and Health Services	Government
220.0	28.4	46.0	20.9	43.7	30.7
223.4	30.4	45.9	22.1	43.8	30.5
225.4	30.9	46.5	23.4	43.1	30.1
225.4	30.2	47.0	23.9	42.6	29.8
225.5	30.5	47.3	23.5	42.7	29.8
225.8	30.6	47.8	22.2	43.5	29.8
224.0	29.3	47.1	21.9	43.8	29.5
219.9	27.4	46.0	20.5	43.8	29.7
219.9	27.6	45.6	20.4	43.9	29.5
216.5	25.9	45.0	19.9	43.9	29.1
2019					
215.3	27.4	44.4	19.4	44.2	30.0
215.3	26.0	44.4	19.6	44.1	30.2
217.5	26.0	44.6	20.0	44.4	30.1
219.1	26.1	44.8	20.1	44.4	29.6
218.1	26.1	44.8	20.4	43.5	28.6
216.3	25.7	45.0	20.4	43.0	27.5
216.4	25.6	44.9	20.4	43.1	27.7
216.7	25.4	44.7	20.1	43.9	28.8
216.6	25.0	45.0	19.9	44.0	29.5
216.1	25.1	45.8	19.8	44.0	29.4
215.4	25.1	46.2	19.7	44.0	28.8
2020					
209.3	24.7	44.5	19.2	43.0	28.2
210.7	25.2	44.5	19.3	43.2	28.8
209.9	24.9	44.2	19.3	42.7	28.9

Youngstown-Warren-Boardman MSA

Nonagricultural Wage and Salary Employment^a

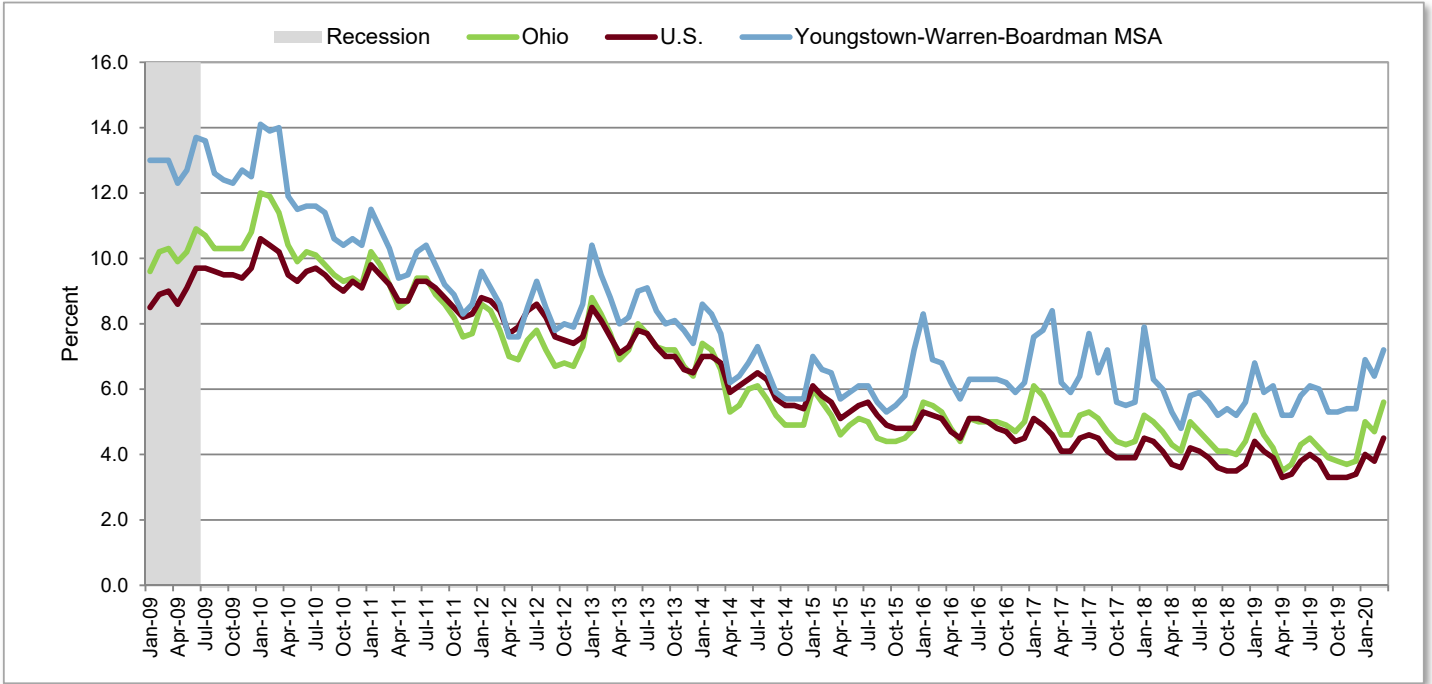
Not Seasonally Adjusted

	Employment (thousands)			Change (thousands)		Percent Change	
	Mar 2020 ^b	Feb 2020 ^c	Mar 2019 ^c	From Last Month	From Last Year	From Last Month	From Last Year
Total Nonagricultural	209.9	210.7	215.3	-0.8	-5.4	-0.4	-2.5
Total Private	181.0	181.9	185.1	-0.9	-4.1	-0.5	-2.2
Goods-Producing (Private)	33.2	33.4	34.7	-0.2	-1.5	-0.6	-4.3
Mining, Logging, and Construction	8.3	8.2	8.7	0.1	-0.4	1.2	-4.6
Manufacturing^d	24.9	25.2	26.0	-0.3	-1.1	-1.2	-4.2
Durable Goods	20.8	21.0	21.4	-0.2	-0.6	-1.0	-2.8
Service-Providing (Private)	147.8	148.5	150.4	-0.7	-2.6	-0.5	-1.7
Trade, Transportation, and Utilities	44.2	44.5	44.4	-0.3	-0.2	-0.7	-0.5
Wholesale Trade	8.3	8.4	8.6	-0.1	-0.3	-1.2	-3.5
Retail Trade	28.0	28.1	27.9	-0.1	0.1	-0.4	0.4
General Merchandise Stores	5.5	5.4	5.6	0.1	-0.1	1.9	-1.8
Transportation, Warehousing, and Utilities	7.9	8.0	7.9	-0.1	0.0	-1.3	0.0
Information	1.7	1.7	1.8	0.0	-0.1	0.0	-5.6
Financial Activities	7.1	7.1	7.1	0.0	0.0	0.0	0.0
Financial and Insurance	4.9	4.9	5.0	0.0	-0.1	0.0	-2.0
Professional and Business Services	19.3	19.3	19.6	0.0	-0.3	0.0	-1.5
Educational and Health Services	42.7	43.2	44.1	-0.5	-1.4	-1.2	-3.2
Health Care and Social Assistance	39.9	39.9	40.6	0.0	-0.7	0.0	-1.7
Hospitals	8.9	8.8	8.7	0.1	0.2	1.1	2.3
Leisure and Hospitality	23.3	23.3	23.9	0.0	-0.6	0.0	-2.5
Other Services	9.5	9.4	9.5	0.1	0.0	1.1	0.0
Government	28.9	28.8	30.2	0.1	-1.3	0.3	-4.3
Federal Government	1.9	1.9	1.9	0.0	0.0	0.0	0.0
State Government	5.5	5.5	5.9	0.0	-0.4	0.0	-6.8
State Government Educational ^e Services	3.0	3.0	3.4	0.0	-0.4	0.0	-11.8
Local Government	21.5	21.4	22.4	0.1	-0.9	0.5	-4.0
Local Government Educational Services	12.4	12.4	13.0	0.0	-0.6	0.0	-4.6

^aSee Technical Notes for concepts. ^bPreliminary. ^cRevised. ^dIncludes wood products; nonmetallic mineral products; fabricated metal products; machinery manufacturing; computer and electronic products; electrical equipment and appliance manufacturing; furniture and related products; miscellaneous manufacturing; food manufacturing; beverage and tobacco products; textile mills; textile product mills; apparel manufacturing; leather and allied products; paper manufacturing; printing and related support activities; petroleum and coal products; chemical manufacturing; plastics and rubber products. ^eIncludes state universities. Excludes the agricultural extension service and agricultural research centers.

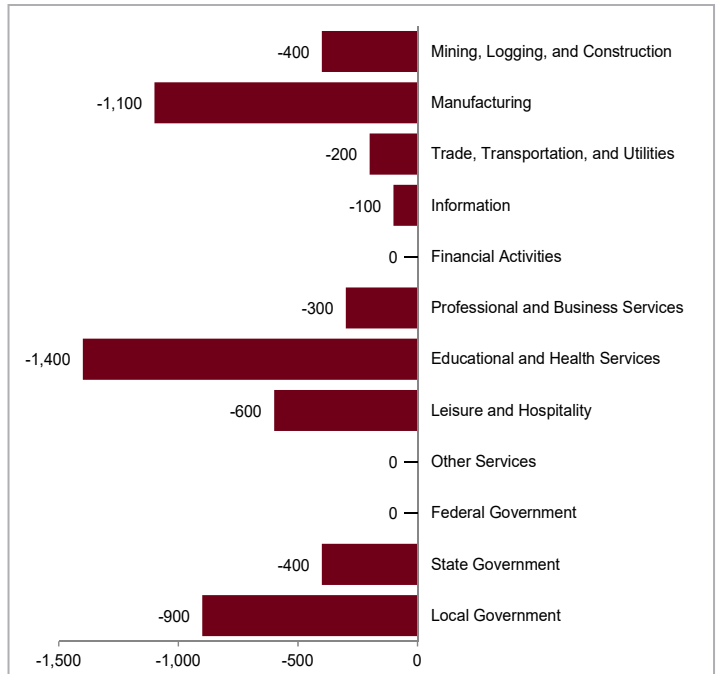
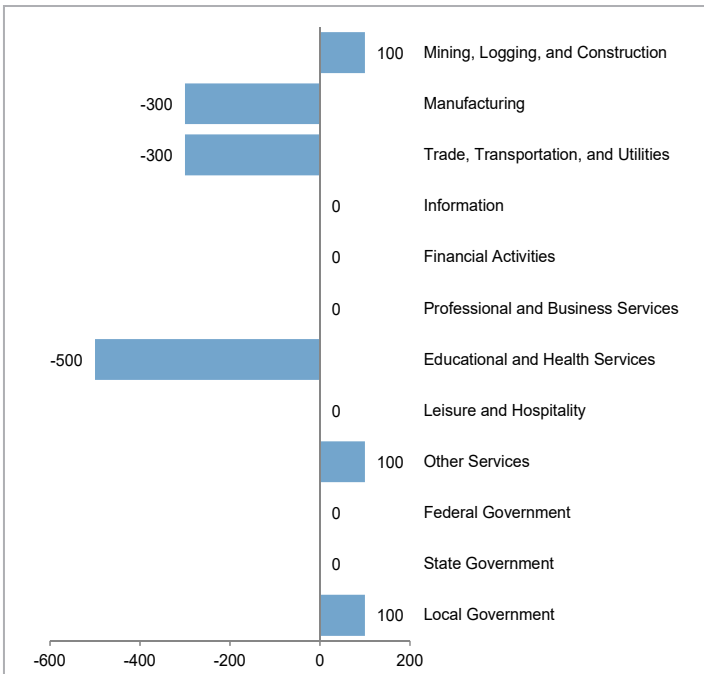
**Youngstown-Warren-Boardman
Metropolitan Statistical Area
Not Seasonally Adjusted**

Unemployment Rates



**Youngstown-Warren-Boardman MSA
Over-the-Month Change**

**Youngstown-Warren-Boardman MSA
Over-the-Year Change**



Ohio and Metropolitan Statistical Areas Hours and Earnings of All Employees^a Not Seasonally Adjusted

In March, Ohio's total private employees' average weekly earnings were \$868.86, a decrease of \$5.62 from February but an increase of \$8.66 from March 2019. The average workweek was 33.9 hours in March, a decrease of 0.1 hours from February and a decrease of 0.1 hours over the year. Average hourly earnings decreased by 9 cents from February to \$25.63. Over the year, average hourly earnings have risen by 1.3 percent.

	Average Weekly Earnings			Average Weekly Hours			Average Hourly Earnings		
	Mar 2020 ^b	Feb 2020 ^c	Mar 2019 ^c	Mar 2020 ^b	Feb 2020 ^c	Mar 2019 ^c	Mar 2020 ^b	Feb 2020 ^c	Mar 2019 ^c
Ohio									
Total Private	\$868.86	\$874.48	\$860.20	33.9	34.0	34.0	\$25.63	\$25.72	\$25.30
Goods-Producing (Private)	\$1,126.94	\$1,135.10	\$1,106.00	39.5	39.8	40.0	\$28.53	\$28.52	\$27.65
Construction	\$1,126.77	\$1,114.90	\$1,112.00	37.9	37.3	38.2	\$29.73	\$29.89	\$29.11
Manufacturing	\$1,132.84	\$1,152.15	\$1,095.24	40.2	40.9	40.4	\$28.18	\$28.17	\$27.11
Service-Providing (Private)	\$805.03	\$811.41	\$799.50	32.5	32.6	32.5	\$24.77	\$24.89	\$24.60
Trade, Transportation, and Utilities	\$794.65	\$788.26	\$781.32	33.7	33.5	34.0	\$23.58	\$23.53	\$22.98
Financial Activities	\$1,265.05	\$1,311.39	\$1,127.67	38.3	38.3	36.4	\$33.03	\$34.24	\$30.98
Professional and Business Services	\$1,039.27	\$1,054.44	\$1,041.01	35.8	36.0	35.7	\$29.03	\$29.29	\$29.16
Educational and Health Services	\$742.22	\$740.91	\$748.65	32.9	32.9	32.2	\$22.56	\$22.52	\$23.25
Leisure and Hospitality	\$334.62	\$351.67	\$356.97	22.0	23.0	24.3	\$15.21	\$15.29	\$14.69
Other Services	\$683.10	\$702.27	\$691.16	29.7	30.6	29.6	\$23.00	\$22.95	\$23.35
Metropolitan Statistical Area (MSA)									
Total Private									
Akron	\$838.35	\$846.69	\$876.36	33.9	33.8	33.5	\$24.73	\$25.05	\$26.16
Canton-Massillon	\$810.95	\$796.63	\$748.06	33.4	33.5	33.1	\$24.28	\$23.78	\$22.60
Cincinnati	\$917.67	\$943.92	\$917.24	33.8	34.2	34.2	\$27.15	\$27.60	\$26.82
Cleveland-Elyria	\$937.67	\$934.33	\$936.05	33.9	34.3	34.3	\$27.66	\$27.24	\$27.29
Columbus	\$862.76	\$853.11	\$843.02	33.9	33.8	33.6	\$25.45	\$25.24	\$25.09
Dayton	\$891.46	\$885.28	\$791.21	34.3	34.3	33.3	\$25.99	\$25.81	\$23.76
Lima	\$765.83	\$751.94	\$843.91	32.3	32.3	32.1	\$23.71	\$23.28	\$26.29
Mansfield	\$756.65	\$756.82	\$763.31	36.5	36.9	36.4	\$20.73	\$20.51	\$20.97
Springfield	\$793.72	\$816.14	\$797.98	34.6	35.3	35.2	\$22.94	\$23.12	\$22.67
Toledo	\$875.82	\$908.79	\$872.25	34.4	34.7	34.3	\$25.46	\$26.19	\$25.43
Weirton-Steubenville	\$668.93	\$683.43	\$706.56	32.3	33.0	34.5	\$20.71	\$20.71	\$20.48
Youngstown-Warren-Boardman	\$771.08	\$769.35	\$808.63	34.5	34.5	34.9	\$22.35	\$22.30	\$23.17

^aSee Technical Notes for concepts. ^bPreliminary. ^cRevised.

Ohio and Metropolitan Statistical Areas

Hours and Earnings of Production or Nonsupervisory Employees^a

Not Seasonally Adjusted

Ohio's production employees in manufacturing industries earned an average of \$880.96 per week in March 2020, a decrease of \$17.86 from February and a decrease of \$17.10 from one year ago. The average workweek of 40.3 hours in March decreased 0.5 hours over the month and 1.2 hours over the year. Average weekly earnings in durable goods, at \$917.18, decreased \$19.89 over the month and decreased \$26.53 from March 2019. Average weekly earnings in nondurable goods, at \$805.17, decreased \$17.62 over the month but increased 79 cents over the year.

	Average Weekly Earnings			Average Weekly Hours			Average Hourly Earnings		
	Mar 2020 ^b	Feb 2020 ^c	Mar 2019 ^c	Mar 2020 ^b	Feb 2020 ^c	Mar 2019 ^c	Mar 2020 ^b	Feb 2020 ^c	Mar 2019 ^c
Ohio
Goods-Producing (Private)
Construction	\$1,112.19	\$1,101.53	\$1,068.98	39.3	38.8	39.2	\$28.30	\$28.39	\$27.27
Manufacturing	\$880.96	\$898.82	\$898.06	40.3	40.8	41.5	\$21.86	\$22.03	\$21.64
Durable Goods^d	\$917.18	\$937.07	\$943.71	40.8	41.5	42.3	\$22.48	\$22.58	\$22.31
Fabricated Metal Products	\$797.90	\$804.64	\$833.45	39.5	41.2	40.4	\$20.20	\$19.53	\$20.63
Transportation Equipment	\$1,181.45	\$1,248.16	\$1,200.11	44.6	46.8	45.1	\$26.49	\$26.67	\$26.61
Nondurable Goods^e	\$805.17	\$822.79	\$804.38	39.2	39.5	39.9	\$20.54	\$20.83	\$20.16
Service-Providing (Private)
Wholesale Trade	\$894.96	\$886.15	\$831.34	36.0	37.0	37.6	\$24.86	\$23.95	\$22.11
Merchant Wholesalers, Durable Goods	\$843.74	\$851.96	\$902.02	37.4	38.0	37.9	\$22.56	\$22.42	\$23.80
Retail Trade^f	\$479.60	\$468.17	\$450.56	29.9	29.5	30.3	\$16.04	\$15.87	\$14.87
Financial Activities	\$986.21	\$956.78	\$878.40	37.3	37.2	36.0	\$26.44	\$25.72	\$24.40
Health Care and Social Assistance	\$645.58	\$640.22	\$646.97	31.4	31.6	31.3	\$20.56	\$20.26	\$20.67
Metropolitan Statistical Area (MSA)									
Cincinnati
Manufacturing	\$997.33	\$1,034.19	\$1,036.06	41.4	43.6	44.6	\$24.09	\$23.72	\$23.23
Cleveland-Elyria
Manufacturing	\$897.37	\$901.79	\$924.35	38.3	39.5	40.4	\$23.43	\$22.83	\$22.88
Durable Goods	\$908.68	\$911.20	\$971.43	39.1	40.0	41.8	\$23.24	\$22.78	\$23.24
Columbus
Manufacturing	\$790.14	\$766.75	\$868.57	38.6	39.1	41.4	\$20.47	\$19.61	\$20.98

^aSee Technical Notes for concepts. ^bPreliminary. ^cRevised. ^dIncludes wood products; miscellaneous manufacturing. ^eIncludes textile mills; textile products mills; apparel manufacturing; leather and allied products; petroleum and coal products. ^fMoney payments only; tips not included.

Ohio Selected Unemployment Insurance Activities Not Seasonally Adjusted

Initial claims filed under the Ohio Unemployment Compensation Law numbered 575,054 in March 2020, up 1,861.8 percent from February and up 2,126.8 percent from March 2019. The average weekly number of benefit recipients, at 97,434, increased 61.8 percent from the previous month and 77.5 percent from the previous year. Total benefits paid, at \$159.8 million, increased 69.7 percent from February. The average weekly benefit payment of \$378.76 in March 2020 was \$5.32 less than in March 2019. At the end of March 2020, there were 233,570 active employer accounts, down 2,000 from February and up 4,314 from March 2019.

	Mar 2020	Feb 2020	Mar 2019	Change From		Percent Change From	
				Last Month	Last Year	Last Month	Last Year
Initial Claims	575,054	29,313	25,824	545,741	549,230	1861.8	2126.8
Continued Claims	780,467	278,938	298,108	501,529	482,359	179.8	161.8
First Payments	111,262	15,732	11,762	95,530	99,500	607.2	845.9
Last Payments	3,240	2,603	2,613	637	627	24.5	24.0
Average Weekly Claimants	177,379	69,735	70,978	107,644	106,401	154.4	149.9
Average Weekly Benefit Recipients	97,434	60,226	54,900	37,208	42,534	61.8	77.5
Paid Weeks of Claims	428,709	240,904	230,581	187,805	198,128	78.0	85.9
Benefits Paid	\$159,834,687	\$94,202,449	\$87,719,835	\$65,632,238	\$72,114,852	69.7	82.2
Average Weekly Payment	\$378.76	\$394.42	\$384.07	-\$15.67	-\$5.32	-4.0	-1.4
Continued Claims for Survey Week	68,271	70,793	65,198	-2,522	3,073	-3.6	4.7
Insured Unemployment Rate	TBD	1.3%	1.3%				
Active Employer Accounts	233,570	235,570	229,256	-2,000	4,314	-0.8	1.9

Source: ODJFS, Office of Unemployment Compensation.

Technical Notes

Except as noted, all data cited are produced by the U.S. Department of Labor, Bureau of Labor Statistics, in cooperation with the Ohio Department of Job and Family Services.

Civilian Labor Force Estimates (CLFE)

Based on the Current Population Survey (household survey) and Local Area Unemployment Statistics (LAUS) program.

Civilian Noninstitutional Population

Persons 16 years of age and older who are not inmates of institutions (for example, penal and mental facilities, homes for the aged), and who are not on active duty in the armed forces.

Civilian Labor Force

Persons in the civilian noninstitutional population, employed or unemployed during the reference week (usually the week including the 12th of the month) distributed by place of residence.

Employed

Persons in the civilian noninstitutional population who, during the reference week, (a) worked at least one hour as paid employees; worked in their own business, profession, or on their own farm, or worked 15 hours or more as unpaid workers in an enterprise operated by a member of the family; and (b) all those who were not working but who had jobs or businesses from which they were temporarily absent because of vacation, illness, bad weather, childcare problems, maternity or paternity leave, labor-management dispute, job training, or other family or personal reasons, whether or not they were paid for the time off or were seeking other jobs. Each employed person is counted only once, even if he or she holds more than one job. Excluded are persons whose only activity consisted of work around their own house (painting, repairing, or own home housework) or volunteer work for religious, charitable, and other organizations.

Unemployed

Persons in the civilian noninstitutional population who had no employment during the reference week, were available for work, except for temporary illness, and had made specific efforts to find employment sometime during the four-week period ending with the reference week. Persons who were waiting to be recalled to a job from which they had been laid off need not have been looking for work to be classified as unemployed.

Data Revisions

Figures for the current month are preliminary; revised figures are released when preliminary data for the next month are released. For example, revised March figures are released at the same time as preliminary April figures are released.

Revisions at the end of the year are called 'annual processing' and typically, adjustments are made to the previous two years for not seasonally adjusted data and five years for seasonally adjusted data. Adjustments are made because more information becomes available throughout the year on

nonfarm jobs and unemployment claims. Also, during annual processing, new population controls are incorporated into the estimates. Population controls refer to population data such as vital statistics on births, deaths, migration, school enrollment, persons living in group quarters, inmates in institutions, etc. These are updated annually by the Census Bureau and provided to the BLS.

Payroll Survey

Nonagricultural wage and salary employment, including hours and earnings estimates, are based on monthly reports from the Payroll Survey of employers under the Current Employment Statistics (CES) program. The CES survey is based on approximately 142,000 businesses and government agencies representing approximately 689,000 worksites throughout the United States.

Industrial Classification

Employer establishments are classified by industry based on their principal product or service. The North American Industry Classification System (NAICS) is used for industrial classification. (See page 51.)

Coverage

Monthly reports on employment, payroll, and hours are obtained from approximately 27,900 Ohio employers.

Estimating Method

Total employment is estimated from the employment of establishments reporting for two consecutive months, as follows:

$$\frac{\text{Sample Employment (Current Month)}}{\text{Sample Employment (Previous Month)}} \times \text{Total Employment (Previous Month)} = \text{Total Employment (Current Month)}$$

Nonagricultural or Payroll Employment

The total number of persons on establishment payrolls employed full or part time who received pay for any part of the pay period which includes the 12th day of the month. Temporary and intermittent employees are included, as are any workers who are on paid leave, or who work during only part of the specified pay period. A striking worker who only works a small portion of the survey period, and is paid, would be included as employed under the CES definitions. Persons on the payroll of more than one establishment are counted in each establishment. Data excludes proprietors, self-employed, unpaid family or volunteer workers, farm workers, and domestic workers. Persons on layoff the entire pay period, on leave without pay, on strike for the entire period or who have not yet reported for work are not counted as employed. Government employment covers only civilian workers.

Technical Notes

Hours and Earnings

Average hours are computed by dividing total production employee hours worked during one week (the seven-day period which includes the 12th of the month) by number of production employees reported for such week. Average hourly earnings are computed by dividing total production employee payroll for one week by total production employee hours for that week. Average weekly earnings are derived by multiplying average hourly earnings by average weekly hours.

Production employees include working supervisors and all nonsupervisory employees (including group leaders and trainees) engaged in fabricating, processing, assembling, inspection, receiving, storage, handling, packing, warehousing, shipping, maintenance, repair, janitorial, guard services, product development, auxiliary production for plant's own use (such as power plant), recordkeeping, and other services closely associated with production operations.

Nonsupervisory employees include employees such as office and clerical workers, repairers, salespersons, operators, drivers, attendants, service employees, line installers, laborers, accountants, janitors, guards, and other employees whose services are closely associated with those of occupations listed.

Payroll refers to dollars paid for full- and part-time production, construction, and nonsupervisory employees who received pay for any part of pay periods that include the 12th of the month. Payroll is reported before deductions for Social Security, group insurance, withholding tax, bonds, and union dues; also includes pay for overtime, holidays, vacations, and sick leave paid directly by the firm. Bonuses (unless earned and paid regularly each pay period), tips, pay not earned in pay period reported (such as retroactive pay), and value of free rent, fuel, meals, or other payments in kind, excluded.

Hours represent hours worked or paid for, during pay periods which include the 12th of the month, for production, construction, or nonsupervisory employees. Hours include time paid for holidays and vacations, and for sick leave when pay received directly from firm.

Employment Error Measures

Error measures for state and area employment estimates are available on the following website: <http://www.bls.gov/sae/790stderr.htm>.

Seasonal Adjustment

Seasonal adjustment removes the effects of events that follow a more or less regular pattern each year. These adjustments make it easier to observe the cyclical and other nonseasonal movements in a data series.

Data Revisions

Additional sample receipts are the primary source of the monthly CES employment revisions. CES begins collecting sample reports for a reference month as soon as the reference period, the establishment's pay period that includes the 12th of the month, is complete. Collection time available for first preliminary estimates ranges from two to three weeks, depending on the scheduled date for the Employment Situation news release.

Given this short collection cycle for the first preliminary estimates, many establishments are not able to provide their payroll information in time to be included in preliminary estimates. CES sample responses for the reference month continue to be collected, are incorporated into the series, and are released the following month.

Benchmarks

Sample-based estimates remain final until employment levels are reset to universe employment counts, or benchmarks; the benchmarks are primarily derived from Unemployment Insurance (UI) tax records. The annual benchmarking process results in revised data back to the last annual benchmark for not seasonally adjusted series and back five years for seasonally adjusted series.

For the establishment, or CES survey, annual benchmarks are constructed in order to realign the sample-based employment totals of each year with the Unemployment Insurance (UI) based population counts. These population counts are much less timely than sample-based estimates and are used to provide an annual point-in-time census for employment.

Types of Businesses by North American Industry Classification System

Goods-Producing (Private)

Mining and Logging

Mining and support activities, oil and gas extraction, cutting and transporting timber

Construction

Construction of buildings; heavy and civil engineering (bridges, roads); and specialty trade contractors (pouring concrete, site preparation, plumbing, painting, and electrical work)

Manufacturing

Durable Goods

Nonmetal and metal products, machinery, computers and electronics, appliances, transportation equipment, furniture, medical, and wood products

Nondurable Goods

Food, printing, chemicals (toiletries), plastics, textiles, paper, apparel, leather, petroleum, and coal products

Service-Providing (Private)

Trade, Transportation, and Utilities

Wholesale Trade

Wholesalers of durable and nondurable goods, business to business electronic markets, and sales representatives

Retail Trade

Auto dealers, building and garden supply centers, furniture, electronic, appliance, food, health, gasoline, clothing, sporting, hobby, book, and music stores

Transportation, Warehousing and Utilities

Transportation (air, rail, water, truck, transit, pipeline, scenic, and sightseeing); private postal services, couriers, warehousing, and storage; utilities (power, natural gas distribution, water, and sewage)

Information

Publishing, motion picture, sound recording, broadcasting, phone services, data processing and hosting, news, libraries, and internet

Financial Activities

Finance and Insurance

Banks, securities, insurance, funds, and trusts

Real Estate, Rental, and Leasing

Real estate agents; rental and leasing of automobiles, consumer goods, and machinery

Professional and Business Services

Professional, Scientific, and Technical Services

Legal services, accounting, bookkeeping, architectural, engineering, design, computer system design, scientific research, advertising, marketing, photography, translation, and veterinary

Management of Companies and Enterprises

Holding companies, corporate offices, management offices, and headquarters

Admin. Support and Waste Management Services

Administrative management (hotel management) and facilities support; employment placement, executive search, temporary help, and professional employer organizations; document preparation, telephone call centers, collection agencies, travel arrangement, security, pest control, janitorial, landscaping, carpet cleaning, packing and labeling, trade show organizer, and auctioneers

Educational and Health Services

Educational Services

Private schools and universities and support services for education (college selection, test preparation, and guidance counseling)

Health Care and Social Assistance

Private ambulatory health, hospitals, nursing and residential care, and social assistance (care for children, elderly, and disabled, emergency relief, vocational and rehabilitation services)

Leisure and Hospitality

Arts, Entertainment, and Recreation

Performing arts, spectator sports, museums, historical sites, zoos, parks, amusement, and gambling

Accommodation and Food Services

Hotels, RV parks, food, and drinking places

Other Services

Repair (autos, electronics, machinery, and appliances); personal (hair, nail, skin, weight reduction, and tattoos); funeral homes; dry-cleaning and laundry services; pet care, parking lots, astrology, coin machines, dating, escort, future telling, life coaching, and personal fitness trainer; associations (churches, grant making, social advocacy, and unions)

Government (Public)

Federal Government

Civilian federal employees including the U.S. Postal Service

State Government

Includes state universities and hospitals

Local Government

Includes local schools, community colleges, and local hospitals; township, city, and county employees such as fire fighters and park rangers

Ohio Department of Job and Family Services
Office of Workforce Development
P.O. Box 1618
Columbus, OH 43216-1618



Search for jobs.
Visit OhioMeansJobs.com
Locate talented employees.

Bureau of Labor Market Information Business Principles for Workforce Development

- Partner with the workforce and economic development community.
- Develop and deploy new information solution tools and systems for the workforce and economic development community.
- Provide products and services that are customer- and demand-driven.
- Be known as an important and reliable source for information solutions that support workforce development goals and outcomes.

This periodical is published under the direction of Bureau Chief Coretta Pettway. For further information, visit <http://OhioLMI.com> or call the Ohio Bureau of Labor Market Information at **1-888-296-7541** option 6, or **(614) 752-9494**.

If you would like to receive email notification when this publication is posted on our website, call **(614) 752-9494** or email ContactLMI@jfs.ohio.gov to be placed on the email notification list.

Mike DeWine, Governor
State of Ohio
<http://Ohio.gov>

Kimberly Hall, Director
Ohio Department of Job and Family Services
<http://jfs.ohio.gov>

Office of Workforce Development
<http://jfs.ohio.gov/owd/>

Bureau of Labor Market Information
<http://OhioLMI.com>

This institution is an equal opportunity provider and employer.
A proud partner of the American Job Center network.